



MINNESOTA
CONSTRUCTION
ASSOCIATION

★ Celebrating 30 Years ★

CONSTRUCTION VIEWS

— SPRING —

CONTENTS

- Celebrating the 2026 Awards of Excellence | 1
- President's Column | 2
- Board of Directors | 2
- Calendar of Events | 3
- Celebrating the 2026 Awards of Excellence | 5
- New Members | 8
- Submit Content for Upcoming Newsletters | 9
- Thank You 2026 Annual Sponsors | 10
- Leadership Training Academy | 11
- Student Mentorship Program | 13
- Summer Boat Cruise | 14
- New Hires & Promotions | 14
- Featured Projects | 15



CELEBRATING THE 2026 AWARDS OF EXCELLENCE

The **31st Annual MCA Awards of Excellence**, a prestigious event recognizing exceptional projects and achievements in construction, was held on January 28, 2026, at the Minneapolis Marriott West. The evening showcased innovation, talent, and dedication within the construction industry.



View the 2026 Awards of Excellence winners on pages 4-6



THANK YOU TO OUR SPONSORS!

EVENT SPONSORS

CAT MODEL SPONSOR



DESSERT SPONSORS

- Empirehouse, Inc.
- Maverick Cutting & Breaking
- Veit

DINNER SPONSORS

- Allegion GC Services
- Gardner Builders
- RJM Construction

TOOTHPICK SPONSOR

- Carciofini Company

PHOTOBOOTH SPONSOR

- KOMA

PROGRAM & SIGN DESIGN SPONSOR

- Gardner Builders

DRINK TICKET SPONSOR

- Sonus Interiors

SIGN SPONSOR

- CES Imaging

PHOTOGRAPHY SPONSOR

- Terra Construction

PRINT SPONSOR

- Kraus-Anderson

Mission: Foster education, recognition and networking for all industry professionals who collaborate to plan, create and sustain best construction practices.

Vision: The collaborative place for the building industry.

Education. Recognition. Networking.



PRESIDENT'S COLUMN

Ryan Klick, Kraus-Anderson

Greetings MCA members and industry friends, Spring is here in Minnesota, and with it comes the construction season ramping up across the state. As projects get underway and job sites come back to life, it's an exciting time for our industry and for MCA.

I'm honored to serve as the 2026 President of the Minnesota Construction Association. I have been an active member of MCA for over seven years. I helped establish the Student Outreach Mentorship Program and coordinate the [Leadership Training Academy](#), our largest annual event supporting construction students. I believe MCA is an invaluable resource for all construction professionals. It provides a platform for us to connect with colleagues, build lasting friendships, and share knowledge and best practices that strengthens the construction community as a whole.

I'd also like to extend a warm welcome to our new board of directors. I'm looking forward to working alongside this talented group of leaders as we continue to advance our association and support our members.

Additionally, I want to recognize and thank Past President John Petersen of Ryan Companies US, Inc. for his outstanding leadership over the past year. Thanks to him and the 2025 Board, MCA is stronger and better positioned than ever to serve our members and our industry.

I hope to see many of you at our upcoming events:

- **APRIL 14:** [Education Session: AI Adoption in Construction with MSA](#)
- **APRIL 23:** [Leadership Training Academy](#)
- **MAY 5:** [Education Session: Busting Through Growth Ceilings: 3 Strategic Levers to Accelerate Organizational Growth](#)

2026 BOARD OF DIRECTORS



PRESIDENT

Ryan Klick
Kraus-Anderson



VICE PRESIDENT

Justin Johnson
RJM Construction



SECRETARY

Matt Bergmann
Laketown Electric Corporation



TREASURER

Kerry Boyd
John A. Knutson & Co., PLLP



PAST PRESIDENT

John Petersen
Ryan Companies US, Inc.



DIRECTOR

Aaron Abelleira
Arthur Chapman Law Firm



DIRECTOR

Becca Blake
Doran Companies



DIRECTOR

David Borak
Orion Search Group



DIRECTOR

Drew Hansen
Titan Technical Services



DIRECTOR

Leslie Johnson
Empirehouse Inc.



DIRECTOR

Chris Scrabeck
Sonus Interiors



DIRECTOR

Avery Wade
Gardner Builders



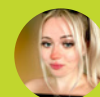
DIRECTOR

Adam Winberg
Doran Companies



STAFF

Jen Wothe
Executive Director



STAFF

Jenny Howard
Website & Marketing Manager

CALENDAR OF EVENTS

TUESDAY, APRIL 7

Industry Event: Arnt Construction Retirement Auction Open House

TUESDAY, APRIL 14

Education Session: AI Adoption in Construction with MSA

THURSDAY, APRIL 23

Leadership Training Academy

TUESDAY, MAY 5

Education Session: Busting Through Growth Ceilings: 3 Strategic Levers to Accelerate Organizational Growth

WEDNESDAY, JUNE 3

18th Annual Scholarship Golf Tournament

WEDNESDAY, JUNE 24

Boat Cruise on Lake Minnetonka

END OF SUMMER

30th Anniversary Celebration

WEDNESDAY, SEPTEMBER 9

Education Session: Crisis Management in Construction, A Panel Discussion

WEDNESDAY, OCTOBER 21

Annual Clay Shoot



Find more information on MCA events at mnconstruction.org/events/calendar

- JUNE 3: 18th Annual Scholarship Golf Tournament
- JUNE 24: [Boat Cruise on Lake Minnetonka](#)
- SEPTEMBER 9: [Education Session: Crisis Management in Construction, A Panel Discussion](#)
- OCTOBER 21: Annual Clay Shoot

Thank you for your continued involvement with MCA. I'm looking forward to a productive and successful year ahead!

FIND OUT WHAT'S TRENDING IN THE INDUSTRY AND STAY UP-TO-DATE ON MCA ACTIVITIES!

Follow us on [LinkedIn](#) and [Instagram](#)!



Your business isn't one-size-fits-all. Your risk management program shouldn't be either.

Business Insurance
Employee Health & Benefits
Private Client Services
Retirement & Wealth

Learn how you can thrive with us at MarshMMA.com

d/b/a in California as Marsh & McLennan Insurance Agency LLC; CA Insurance Lic: 0H18131. Copyright © 2025 Marsh & McLennan Agency LLC. All rights reserved. MarshMMA.com

CELEBRATING THE 2026 *Awards of Excellence*

The Awards of Excellence Gala brought together over 280 industry professionals to honor outstanding individuals and organizations that have demonstrated unparalleled excellence in construction.

PROJECT EXCELLENCE AWARDS WINNERS

NEW PROJECT TOTAL VALUE UNDER \$15 MILLION
Terra Construction — Carleton College Class of 1974 Center



NEW PROJECT TOTAL VALUE BETWEEN \$15 MILLION AND \$50 MILLION
Terra Construction — Carleton College Student Housing



NEW PROJECT TOTAL VALUE OVER \$50 MILLION
Ryan Companies US, Inc. — Marvella 2190



PROJECT EXCELLENCE AWARDS WINNERS

RENOVATION, EXPANSION OR TENANT IMPROVEMENT

Adolfson & Peterson Construction — Tartan High School Addition & Renovation



PUBLICLY FUNDED CONSTRUCTION PROJECT

Donlar Construction — City of Saint Paul North End Community Center



RESEARCH, INNOVATION, OR USE OF TECHNOLOGY

Terra Construction — Carleton College Phius Certified Student Housing



SUBCONTRACTOR/SPECIALTY CONTRACTOR

Rachel Contracting — Essentia Health St. Mary's Hospital Demolition



MCA CHOICE AWARD

MCA CHOICE AWARD WINNER

RJM Construction — Bloomington Ice Garden



LEARN MORE
ABOUT THESE PROJECTS!

PEOPLE'S CHOICE AWARD WINNERS

GENERAL CONTRACTOR OF THE YEAR

Bauer Design Build



DESIGN PROFESSIONAL OF THE YEAR

BKBM



SUBCONTRACTOR OF THE YEAR

Fehn Companies



SERVICE PROVIDER OF THE YEAR

Holmes Murphy Construction



CONSTRUCTION
BUILD MOMENTUM

MEMBER OF THE YEAR



COREY BRONCZYK
Arthur Chapman Law Firm

Corey has committed a great deal of time, energy, and enthusiasm to MCA through his strong engagement on the board, numerous MCA events, volunteering on several committees, and his willingness to support and provide mentorship to younger industry team members. Corey is always willing to step in and help wherever he is needed, making him an invaluable member of the MCA community.

— FUN AT THIS YEAR'S AWARDS GALA! —

Check out all event photos >>





MINNESOTA
CONSTRUCTION
ASSOCIATION

Education. Recognition. Networking.

— WELCOME TO OUR NEW MEMBERS —

COMPANY MEMBERS:

BOLANDER **Carl Bolander & Sons** is a heavy civil contractor delivering private and public projects throughout the Midwest. Founded in 1924, Bolander prioritizes its clients, collaborating with contractors, architects, engineers, owners, and stakeholders to deliver distinctive and inventive solutions that minimize risk, provide financial value, and permit aggressive construction timelines. For more than 100 years, Bolander has developed a commitment to providing high-quality services and has gained a reputation for safety, integrity, and dependability, allowing us to form strong connections with our clients.

Darcy Solutions Inc. delivers high-efficiency, groundwater-enabled geothermal systems for commercial and industrial buildings, campuses, and thermal energy networks. Our patented hardware and proprietary hydrogeologic assessment techniques unlock the thermal potential of aquifers—making geothermal viable in locations previously considered infeasible. From initial inquiry to long-term optimization, Darcy provides a turnkey approach: Desktop Hydrogeologic Assessment, Test Diagnostics, Design Assist, Contracting, Construction Execution, and full aftermarket support including Warranty, Service, Monitoring, and Optimization.

ESI is an engineering investigation and analysis firm uniquely positioned to meet the varied

and often specialized needs of our clients. Our consultants pair technical expertise with in-depth industry knowledge to ensure that we are responsive and relevant in the services we provide. With highly qualified personnel and state-of-the-art test facilities, labs, and equipment, ESI provides clients with access to our full range of engineering capabilities, and can assemble the right team for virtually any project.



Diversified Construction is a mid-sized commercial general contractor that combines the personal touch of a small company with the robust capabilities of a larger firm. We take pride in our commitment to quality and fostering long-lasting relationships, with over 90% of our projects stemming from repeat business and referrals. Our expertise spans various sectors, including Retail, Restaurant, Office, Medical/Dental, Industrial, and Small Projects/Service Work.



Minneapolis Glass Company is a woman-owned glass fabricator and glazing contractor that designs, globally sources, and installs customized glass solutions.



Minnesota Utilities & Excavating is a trusted partner in civil site development, providing expert earthwork, utility installation, environmental cleanup and demolition services. Grounded in integrity, teamwork, and long-term relationships with clients, subcontractors, and industry partners, MU&E delivers reliable performance on every project.



Preferred Concrete Construction, Inc. is a concrete & masonry contractor, the majority of our projects consist of multi-family, commercial, industrial, retail, townhomes. Through our sister company KE Commercial Contractors, Inc., we can supply and erect PEMB.



Signature Woodworking specializes in providing high-quality commercial millwork that elevates the aesthetic and functional appeal of any business environment. Our skilled craftsmen and women bring years of expertise to each project, utilizing cutting-edge technology and premium materials to create custom cabinetry tailored to your specific needs. Whether you're looking to enhance an office, medical, educational, retail or hospitality setting, we deliver precision and excellence while meeting deadlines in both production and installation of our work. With a commitment to superior craftsmanship and customer satisfaction, we bring your vision to life,

transforming spaces into inspiring, productive environments.



TITAN TECHNICAL SERVICES Titan Technical Services LLC is a full-service layout and data collection company for commercial construction and energy projects.

STUDENT MEMBERS:

- **Dunwoody College of Technology**
James Baird
- **Minnesota State University, Mankato**
Hayden M. Egner
- **North Dakota State College of Science**
Blake Nemec
- **St. Cloud State University**
Patrick Kubisa
- **University of Minnesota**
Jack Empey

SUBMIT CONTENT FOR UPCOMING NEWSLETTERS!

SHARE YOUR CONTENT!

Leverage your membership by sharing your company's story. We make it easy for you to celebrate accomplishments with your fellow members. Click the buttons below to submit newsletter content:



FEATURED PROJECTS



IN THE COMMUNITY



NEW HIRES & PROMOTIONS



Visit the MCA website for guidelines and more information.

— Thank You 2026 Annual Sponsors —

PLATINUM LEVEL



GOLD LEVEL



SILVER LEVEL



BRONZE LEVEL





LEADERSHIP TRAINING ACADEMY

Thursday, April 23 | 7:30 AM – 2:00 PM
Golden Valley

Join us for an exciting day of networking with students, faculty, and fellow industry professionals! The [Leadership Training Academy](#) is the perfect opportunity for students to take their professional development to the next level, connect with peers, gain valuable insights from experienced professionals, and build relationships that can shape their future careers.

Cost:

- Students & Faculty — \$15
- Members — \$20
- Nonmembers — \$25

Thanks to our generous sponsors, this year's event will be held in two locations across the street from each other:

>> [Allegion](#)

1000 Boone Avenue N #340
 Golden Valley, MN 55427

>> [RJM Construction](#)

830 Boone Ave N
 Golden Valley, MN 55427



REGISTER TODAY



THANK YOU SPONSORS!

EVENT SPONSORS



LEADERSHIP LOUNGE



US COMPLIANCE

JOB INTERVIEW



KRAUS-ANDERSON®

TABLE TOPICS COMPETITION



PURSUIT COMPETITION



NEGOTIATION COMPETITION



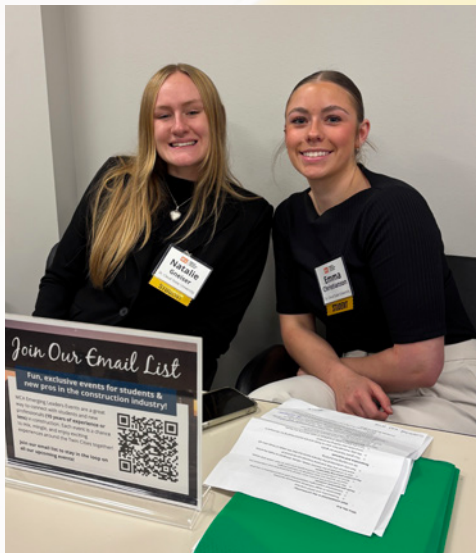
QUIZ BOWL COMPETITION



LUNCH SPONSOR



— Leadership Training Academy —





STUDENT MENTORSHIP PROGRAM

This year, the MCA Student Outreach Committee launched its inaugural Mentorship Program, designed to connect college students pursuing careers in the construction industry with experienced industry professionals. As a first-year initiative, the program aimed to bridge the gap between academic learning and real-world construction practices while building early, meaningful connections between students and professionals.

Throughout the program, students were paired with mentors who provided guidance on career paths, industry expectations, jobsite experience, and professional development. Mentors shared firsthand insights into project management, field operations, safety, leadership, and the day-to-day realities of working in construction. These conversations helped students gain a clearer understanding of how their education translates into practical application.

The first year of the program was highly successful, with strong engagement from both students and mentors. Students reported increased confidence entering the workforce, a better understanding of career opportunities within the construction industry, and valuable professional connections. Mentors benefited from the opportunity to support the next

generation of construction professionals while developing their own leadership and communication skills.

Overall, the inaugural year established a strong foundation for the Mentorship Program. It reinforced our commitment to workforce development, strengthened relationships between industry and education, and positioned the program for continued growth and long-term impact within the construction community.



The MCA mentorship program has been very successful in my experience. MCA provides broad 'bumpers' that allow you the flexibility to meet in a way that fits your schedule. My experience with my mentee was very positive. As a professional who has been in the industry for over 10 years, sitting down with a college student and explaining what I do in my career is an excellent way to detach from day-to-day activities and look at the big picture of my career. It has been very rewarding to help my mentee navigate school and entering the workforce.

— **ANDY ASSMAN, CHC**, Senior Project Manager at Ryan Companies US, Inc.



SUMMER BOAT CRUISE

Wednesday, June 24, 2026
3:45 – 6:00 PM | Lake Minnetonka

Welcome Aboard! Set sail with MCA on the beautiful waters of Lake Minnetonka this summer! Join us for an unforgettable afternoon of making meaningful connections in a stunning waterfront setting. Get ready to mix and mingle with industry peers while enjoying breathtaking views.



[REGISTER HERE](#)



NEW HIRES & PROMOTIONS



JON DIESSNER

President
Kraus-Anderson Insurance



JAMES MARKERT

Associate Attorney
*Arthur, Chapman, Kettering,
Smetak & Pikala, P.A.*

THANK YOU SPONSORS!

BEVERAGE SPONSORS

Empirehouse, Inc.
Orion Search Group
RAM Construction Services

FOOD SPONSOR

BKBM Engineers

— FEATURED PROJECTS —



Grazzini Brothers & Company

Minneapolis–St. Paul International Airport (MSP) – Baggage Claim Terrazzo Refresh

Completion Date:
Fall 2022

Architect: Alliance
Partner: Morcon

Minneapolis–Saint Paul International Airport’s baggage claim is one of the highest-traffic spaces in the state—and the flooring has to perform like it. Grazzini partnered with the project team to deliver a terrazzo installation designed for durability, easy maintenance, and a clean, modern passenger experience.

The finished floor features a bold geometric pattern using multiple field colors and contrasting aggregates to create movement and visual clarity across the concourse. Large-scale triangles and directional forms help guide travelers through the space while still feeling polished and intentional—an important balance in an area where wayfinding and first impressions matter. The design pairs seamlessly with the bright, open architecture above, bringing cohesion between floor, lighting, and circulation.

Terrazzo is a natural fit for airport environments: it’s long-lasting, sustainable, and holds up to constant rolling luggage, cleaning cycles, and daily wear without sacrificing appearance. This project is a great example of how performance-driven materials can still deliver a strong design statement—especially in spaces that millions of people move through every year. ■

— FEATURED PROJECTS —



Kraus-Anderson **Community** **Performing Arts** **Center – North** **Minneapolis, MN**

Completion Date:
2027

Architect:
LSE Architects

Two area construction firms have formed “Kraus Anderson/ Zuri 3, A Joint Venture” to serve as the construction manager of the new Community Performing Arts Center (CPAC), an 8,000-capacity amphitheater operated by the Port of Minneapolis, LLC. CPAC is an initial phase of a plan to redevelop The Upper Harbor Terminal, a 48-acre site along the Mississippi River off I-94 and Dowling Ave. N. at 3501-3649 West River Road in North Minneapolis.

Port of Minneapolis (POM), a joint venture between First Avenue and the Minnesota Orchestra, expects to host approximately 50 ticketed events annually. A portion of the ticket proceeds will be reinvested directly into the local community through a partnership with the African American Community Development Corporation, which will serve as the fund manager for CPAC. A community entity will manage the fund to explore and develop community programming, local vendor and entrepreneur opportunities, and youth jobs and career programs.

In addition to world-class musical acts, CPAC will also host year-round community programming in public spaces, with a strong focus on including Northside residents, businesses and organizations. ■



WOULD YOU LIKE TO
SHOWCASE YOUR
COMPANY IN THE NEXT
**CONSTRUCTION
VIEWS?**

Upload all company press releases,
announcements, and updates to the
MCA website.



MINNESOTA
CONSTRUCTION
ASSOCIATION

★ *Celebrating 30 Years* ★

MCA

4248 Park Glen Road
Minneapolis, MN 55416
(952) 928-4646
www.mnconstruction.org
info@mnconstruction.org

Jen Wothe
Executive Director

