

# Awards of Excellence

## SPONSORS

### Event Sponsors



### CAT Model Sponsor



### Dinner Sponsors

- Gardner Builders
- Holmes Murphy Construction
- Maverick Cutting & Breaking
- RJM Construction

### Dessert Sponsors

- Allegion
- All In One Accounting
- Bituminous Roadways, Inc.
- Carciofini Company
- Commercial Drywall, Inc.
- Dem-Con Companies
- Greystone Construction Company
- Kellington Construction
- Konik
- Mavo Systems
- Orion Search Group
- Sonus Interiors
- Veit & Company, Inc.

### Toothpick Sponsors

- Brush Masters
- Empirehouse, Inc.
- Loeffler Construction & Consulting

### Drink Ticket Sponsor

- Schreiber Mullaney Construction

### Program & Sign Design Sponsor

- Gardner Builders

### Program Printing Sponsor

- Kraus-Anderson

### Photobooth Sponsor

- SwedeBro

### Photography Sponsor

- Terra Construction

### Sign Printing Sponsor

- CES Imaging

# 2025 MCA Board of Directors

## President

**John Petersen**

*Ryan Companies US, Inc.*

## Treasurer

**Kerry Boyd**

*Smith Schafer & Associates*

## Directors

**Aaron Abelleira**

*Arthur, Chapman, Kettering,  
Smetak & Pikala, P.A.*

**Matt Bergmann**

*Laketown Electric Corporation*

**David Borak**

*Orion Search Group*

## MCA Staff

**Jen Wothe**

*Executive Director*

## Vice President

**Ryan Klick**

*Kraus-Anderson*

## Secretary

**Justin Johnson**

*RJM Construction*

**Dalton Hauer**

*Terra Construction*

**Leslie Johnson**

*Empirehouse, Inc.*

**Chris Scrabeck**

*Sonus Interiors*

**Jenny Howard**

*Website and Marketing Manager*

## Past President

**Patrick North**

*SitesForBuilders.com*

**Avery Wade**

*Gardner Builders*

**Adam Winberg**

*Doran Companies*

## Special Thanks to...

### Awards Committee

#### Co-Chair

**Kerry Boyd**

*Smith Schafer & Associates*

#### Co-Chair

**Justin Johnson**

*RJM Construction*

**Robert Antilla**

*Brush Masters*

**Dan Johnson**

*Allegion*

**Ryan Schmidt**

*American Engineering Testing, Inc.*

#### Communications Liason

**Avery Wade**

*Gardner Builders*

#### Staff

**Jen Wothe**

*Executive Director*

### Judges

**Deborah Bauknight**

*LSE Architects*

**Basem Hammami**

*RSP Architects*

**Josh Herzog**

*Herzog Engineering LLC*

**Adam Meyer**

*Studio M Architects*

**Gaius Nelson**

*Nelson-Tremain Partnership*

**Amy Schwabe**

*TWP Architects*

**Jay Wiederholt**

*HGA*

**Jill Winkler**

*Leo A Daly*

# Welcome

*John Petersen, MCA President*

## Awards of Excellence Presentation

*Justin Johnson, Awards of Excellence Emcee*

### MCA Choice Award

#### **MCA Choice Award** .....5-6

- University of St. Thomas Schoenecker Center—McGough

### Nominations

#### **New Project Total Value Under \$15,000,000** .....7-8

- City of Chisholm Public Safety Building—Adolfson & Peterson Construction
- Saint John’s University Baseball Clubhouse—Donlar Construction
- National Sports Village—Doran Companies
- Hohensteins Distribution—Gardner Builders
- Canterbury Park Horse Barn Redevelopment & Backside Improvements—Greystone Construction Company
- Red Lake Nation College - Minneapolis—Loeffler Construction & Consulting
- Massman Automation—McGough
- Animal Emergency & Referral Center—RJM Construction

#### **New Project Total Value Over \$15,000,000** ..... 9-10

- Carlton County Justice Center—Adolfson & Peterson Construction
- Minnesota State Veterans Cemetery - Redwood Falls—Donlar Construction
- Juniper Apartments—Doran Companies
- Mayo Clinic Anna-Marie and Stephen Kellen Building—Knutson Construction
- Highview Elementary School—Loeffler Construction & Consulting
- University of St. Thomas Schoenecker Center—McGough
- V3 Sports—RJM Construction
- 4th and Park Apartments—Ryan Companies US, Inc.
- Lake Leaf Cultivation—Shaw-Lundquist Construction
- North Loop Green—Wells

#### **Renovation, Expansion or Tenant Improvement Project** ..... 11-12

- LaSalle Plaza Reposition—Fendler Patterson Construction
- Winthrop and Weinstine—Gardner Builders
- Zenith DCHS Apartments—Kraus-Anderson
- Minneapolis American Indian Center—Loeffler Construction & Consulting
- St. Catherine University - Our Lady Victory Chapel Renovation—McGough
- First Resource Bank Mill District Expansion—PCL Construction Services, Inc.
- TRIA GameFace—RJM Construction
- 2441 Arts—Rochon Corporation
- Alerus Headquarters—Terra Construction
- M Health Fairview St. John’s - Staat Mod Observation Unit Addition—The Boldt Company

**Publicly Funded Construction Project** ..... 13-14

- Ramsey Washington Energy Plant Stage III Additions—Adolfson & Peterson Construction
- PICA Head Start—Bauer Design Build
- Kaposia Library, Dakota County Library system located in South Saint Paul—Donlar Construction
- University of Minnesota Microbial Cell Production Facility—Knutson Construction
- Antlers Park Redevelopment Project—Loeffler Construction & Consulting
- Monticello Downtown Roadway & Pedestrian Improvement Project—Meyer Contracting, Inc.
- Apple Valley Fire Station #2—Terra Construction

**Research, Innovation or Use of Technology** ..... 15

- HealthPartners Apple Valley—Gardner Builders

**Subcontractor/Specialty Contractor Project** ..... 16

- Minnetrista L24 Renovation—Maverick Cutting & Breaking
- Grand Casino Mille Lacs Hotel Renovation—Sonus Interiors

**Member Awards** ..... 17-18

- General Contractor of the Year
- Subcontractor of the Year
- Design Professional of the Year
- Construction Service Provider of the Year
- Member of the Year

## MCA Merch and CAT Model Drawings

### SELECTION PROCESS

In each category judges rated nominations based on general project information, schedule, safety, cost, project management, quality management, cost management, project complexity, innovation and creativity, and customer satisfaction. Both progress and completed work photos were required with each nomination.



**Connect with MCA on social media and share your stories with us!**

Instagram: [@minnesota\\_construction](https://www.instagram.com/minnesota_construction)

LinkedIn: [Minnesota Construction Association](https://www.linkedin.com/company/minnesota-construction-association)

**#MCAawards**



## **University of St. Thomas Schoenecker Center *McGough***

The Schoenecker Center is the University of St. Thomas' newest and largest academic building to help meet the rapidly evolving needs of the community and employers by enabling collaborative, interdisciplinary education that incorporates diverse viewpoints into students' work. The 130,000 sq ft. building houses three academic areas (Arts, Engineering, and Sciences) and everything from engineering high bays, science labs, musical performance spaces, and art galleries. It also includes St. Thomas' Centers for Artificial Intelligence, Data Science and Water Justice, an emerging media newsroom, and robotics labs.

The center redefines the university's look along Summit Avenue, where it adjoins the O'Shaughnessy Science Hall, home to several engineering, math, and science departments. Designed with input from various corporate industry partners, the center inspires more collaboration among students who otherwise may not have worked together in a typical university setting. Additionally, it provides learning, meeting, and performance spaces for local K-12 schools and community organizations.





### **City of Chisholm Public Safety Building** *Adolfson & Peterson Construction*

The Chisholm Public Safety Building is a new, 22,963 sq. ft. facility consolidating police, fire, and ambulance services in Chisholm, MN. Built with sustainability B3 requirements, it replaces a 1908 structure and enhances public safety for the growing community of Chisholm.



### **Saint John's University Baseball Clubhouse** *Donlar Construction*

The new Saint John's University baseball clubhouse provides much-needed on-field facilities for the team, including lockers, showers, and a training room. The rooftop deck offers a new space for fans to tailgate and watch games, enhancing the overall game-day experience.



### **National Sports Village** *Doran Companies*

National Sports Village is a two-phase commercial development adjacent to the National Sports Center in Blaine, Minnesota. Phase I spans three acres and features two commercial buildings totaling over 29,000 sq. ft. The development combines Pizza Pub Prime, Scooter's Coffee, retail and community sports to create a local hub of activity.



### **Hohensteins Distribution** *Gardner Builders*

Hohensteins was a 141,000 sq. ft. design-build project in conjunction with Mohagen Hansen Architects and Savills Minneapolis, formerly known as Cresa. The scope included the complete ground-up new construction of the shell building, the entire interior buildout, including 17,000 sq. ft. of office area, and a 14,000 sq. ft. interior keg cooler.

## Canterbury Park Horse Barn Redevelopment & Backside Improvements *Greystone Construction Company*

The project is a landmark investment in Minnesota's horse racing industry. This transformative endeavor delivered 115,000 sq ft. of state-of-the-art barns & upgraded infrastructure, enhancing Canterbury for 1,000 horsepersons and 1,100 racehorses it serves each summer while expertly navigating SWPPP challenges, complex phasing, and utility transitions, ensuring minimal disruption during racing season.



## Red Lake Nation College - Minneapolis *Loeffler Construction & Consulting*

The Red Lake Nation College - Minneapolis facility repurposed three historic buildings to create a modern higher education space featuring classrooms, training areas, student services, offices, and a rooftop area. Designed to serve Indigenous students specifically, the college is a significant addition to the Native American community in the Twin Cities.



## Massman Automation *McGough*

The Massman Automation campus is a 73,360 sq ft. facility featuring high-bay manufacturing, an overhead crane bay, modern offices, and sustainable design. Embracing natural light and preserving nearby wetlands, it prioritizes efficiency, employee wellness, and wildlife habitat, creating a productive and eco-friendly environment nestled in scenic landscapes.



## Animal Emergency & Referral Center *RJM Construction*

With rising demand for specialized animal care, Animal Emergency & Referral Center (AERC) collaborated with RJM Construction, KOMA Architects, and Oppidan to construct a state-of-the-art, 45,000 sq ft. facility. The original clinic now handles urgent care, while the new center offers 24/7 emergency services and 11 specialized departments for comprehensive, advanced animal care.







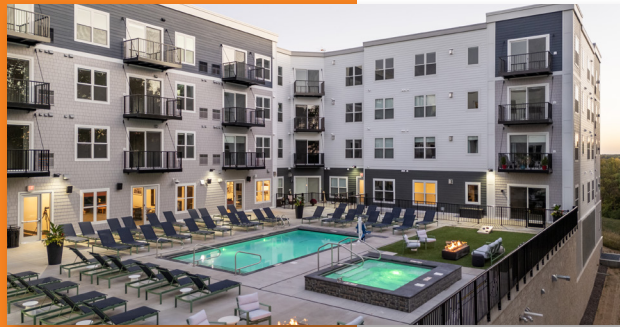
### **Carlton County Justice Center** *Adolfson & Peterson Construction*

The 118,000 sq ft. Carlton County Justice Center prioritizes rehabilitation and support for incarcerated individuals, including women, through its Justice-Involved Females (JIF) Unit. Featuring a Sheriff's office, courts, sustainable design, advanced security, and a human-centered approach, the facility fosters rehabilitation and aims to reduce recidivism while serving the broader community.



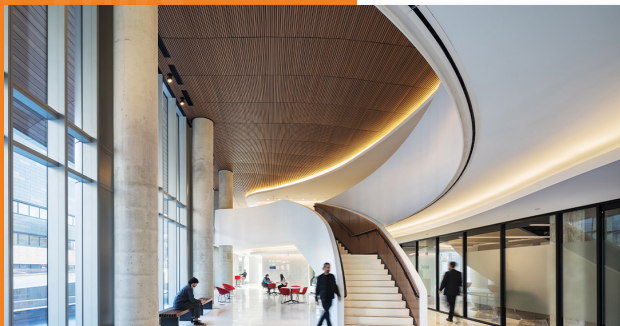
### **Minnesota State Veterans Cemetery - Redwood Falls** *Donlar Construction*

The new Minnesota State Veterans Cemetery in Redwood Falls was scheduled to open in August 2023, but was completed earlier than expected. It features 150 crypts, 750 cremains burial areas, 1,080 columbarium niches, and 50 standard burial plots. This \$15.7 million project provides a dignified resting place for Minnesota's veterans.



### **Juniper Apartments** *Doran Companies*

Juniper is a 148-unit and 262,349 sq ft. multifamily project in Minnetrista, MN. A product of Doran's integrated service model, Juniper offers a collection of alcoves, one-, two-, and three-bedroom apartments, as well as one- and two-bedroom apartments with dens. Amenities include a fitness center, entertainment suite, clubroom, amenity deck and more.



### **Mayo Clinic Anna-Marie and Stephen Kellen Building** *Knutson Construction*

Mayo Clinic's Anna-Maria and Stephen Kellen Building in Rochester, Minnesota, is an 11-story, 176,000 sq ft. research facility. Located in the Destination Medical Center Discovery Square district, it supports integrated healthcare, education, and research, with a focus on neurosciences and cancer research, advancing global medical care.

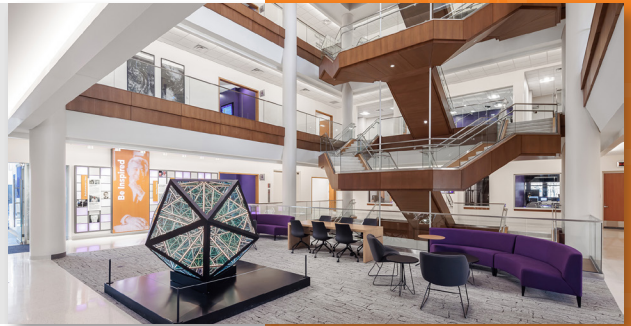


### **Highview Elementary School** *Loeffler Construction & Consulting*

Highview Elementary, the 9th school in Lakeville Area School District, spans 100,000 sq ft. and includes K-5 classrooms, special education spaces, and areas for Music, STEM, Gym, and Art. Its curved design promotes central common areas, complemented by outdoor sports fields and playgrounds, with enhanced security ensuring student safety.

### University of St. Thomas Schoenecker Center *McGough*

The University of St. Thomas' new Schoenecker Center is a five-level facility uniting Engineering, Sciences, and Arts. It houses classrooms, labs including a high bay civil engineering lab, department offices, music performance spaces, and various collaboration areas. The project prioritized sustainable practices, achieving LEED Gold certification.



### V3 Sports *RJM Construction*

V3 Sports partnered with RJM Construction & Tri-Construction to bring a community aquatic & fitness facility to North Minneapolis. This 41,664 sq. ft. facility features an Olympic-sized pool, space for running, walking, and biking, and a variety of group spaces. The V3 Center aims to promote health, wellness, and equity in a welcoming environment.



### 4th and Park Apartments *Ryan Companies US, Inc.*

The 4th and Park apartments have transformed a small footprint into a vibrant 26-story multifamily high-rise in Minneapolis, completing Ryan's Downtown East Development. Featuring modern design, gateway-priced units, rooftop amenities, and seamless downtown connectivity, this collaboration with Weidner Apartment Homes delivers an amenity-rich urban living experience.



### Lake Leaf Cultivation *Shaw-Lundquist Construction*

Lake Leaf cultivation is a new and important business venture for Mille Lacs Corporate Ventures, a business development arm of the Mille Lacs Band of Ojibwe. Lake Leaf is a state-of-the-art, technology-driven cultivation facility for the production of cannabis and cannabis derived products.



### North Loop Green *Wells*

North Loop Green in Minneapolis is a 34-story building featuring luxury rentals, short-term units, offices, retail, dining, underground parking, and a one-acre park. Located by Target Field, it enhances the North Loop neighborhood with urban luxury, shared experiences, and vibrant amenities for residents and visitors alike.





### **LaSalle Plaza Reposition** *Fendler Patterson Construction*

The LaSalle Plaza Repositioning transforms a 20,000 sq ft. vacant 4th floor into a vibrant office tenant amenity space, featuring a lounge, training-center, renovated restrooms, state-of-the-art golf simulator lounge, and a rooftop deck. This \$4 million project redefines tenant engagement, blending luxury and functionality into a modern, multi-use destination for the building.



### **Winthrop and Weinstine** *Gardner Builders*

This 87,000 sq ft., 6-floor renovation at Capella Tower was completed in 8 months. Highlights include an internal staircase, 240+ acoustically-isolated offices and conference rooms, modern amenities, and advanced technology. A new 2,500 sq ft. rooftop space with outdoor areas and a solarium was added, alongside significant mechanical and structural upgrades, transforming the space.



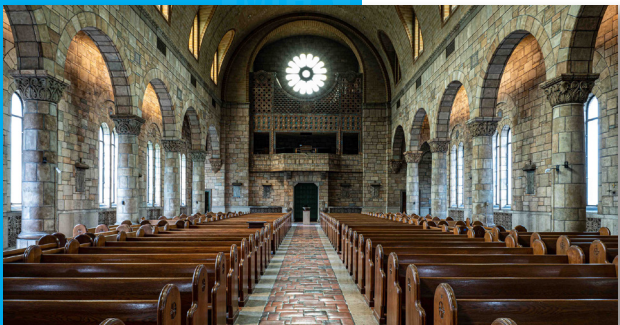
### **Zenith DCHS Apartments** *Kraus-Anderson*

The bold adaptive reuse Zenith DCHS Apartments project converted an icon - Duluth's Historic Central High School - into 122 mixed-income apartments. Addressing exacting criteria for HUD financing and historic tax credits, restoring original materials and adding modern amenities and comforts, the team repurposed this 1892 structure with skill, artisanship and sensitivity.



### **Minneapolis American Indian Center** *Loeffler Construction & Consulting*

The Minneapolis American Indian Center, originally opened in 1975, has been fully remodeled with expanded public meeting spaces, a new fitness center, a community café, an expanded art gallery, and youth and elder-focused areas. Sustainable, culturally appropriate materials ensure the space honors its tribal community roots.



### **St. Catherine University - Our Lady Victory Chapel Renovation** *McGough*

Our Lady of Victory Chapel, nestled on St. Catherine University's campus, underwent a two-year restoration to celebrate its centennial. The project included cleaning Batchelder tile, tuckpointing, and replacing 9-foot windows. Re-dedicated on October 6, 2024, the Chapel now shines with renewed beauty, honoring its historic legacy.

**First Resource Bank Mill District Expansion**  
*PCL Construction Services, Inc.*

The First Resource Bank Mill District renovation expanded the existing space by 139%. The transformed space boasts a two-story atrium, “The Platform” gathering area, and a new entrance along Washington Avenue. The headquarters accommodates 18 employees and has additional desks for visitors, demonstrating their commitment to serving employees and clients.



**TRIA GameFace**  
*RJM Construction*

RJM Construction partnered with TRIA GameFace to create a 17,000 sq ft. state-of-the-art Performance Center in St. Louis Park. The center offers elite sports training, recovery areas, top-tier sports medicine, and a premium sound system. The combination of GameFace’s coaches with TRIA’s medical expertise will provide comprehensive athletic development and care.



**2441 Arts**  
*Rochon Corporation*

24,000 sq ft. 4-story historical renovation of an industrial building. There were heavy structural modifications, including lowering the floor in the basement installing a new stair tower and elevator, and creating a 3-story atrium featuring a skylight with a wood slat feature wall from floor to ceiling.



**Alerus Headquarters**  
*Terra Construction*

This project involved the 29,69 sq ft. interior buildout for Alerus’s new headquarters in Minnetonka. Work included elevator lobby, reception area, offices, workroom, conference rooms, multi-purpose rooms, huddle rooms, wellness rooms, café, coffee bars, vault and restrooms. Featured items included unique wall coverings, electrically operable walls, and solid surface wall paneling.



**M Health Fairview St. John’s  
Staat Mod Observation Unit Addition**  
*The Boldt Company*

Boldt delivered a 16-bed ICU patient observation wing onto the existing facility in 5 months. Built offsite in Oshkosh, WI, then transported and installed on the St. John’s campus—the first of its kind in the state of Minnesota. Construction started offsite September, and the first patient was seen in January.





## Ramsey Washington Energy Plant Stage III Additions

*Adolfson & Peterson Construction*

By constructing two state-of-the-art sorting lines, The Ramsey Washington Energy Plant Phase III Additions project increased recycling capacity and introduced a pioneering food scrap collection program. Through innovative design, meticulous planning, and collaboration, this project achieved a 50% waste diversion rate and set a new standard for sustainable practices.



## PICA Head Start

*Bauer Design Build*

This was an addition to an existing building allowing classroom and training room expansion for PICA's organization. The project included five classrooms, five training centers, two sleeper units, a catering kitchen and two-story atrium.



## Kaposia Library, Dakota County Library System located in South Saint Paul

*Donlar Construction*

The new South St. Paul library is a modern 16,000 sq ft. facility designed to serve a diverse community. It offers study rooms, meeting spaces, a heritage room, outdoor reading space, children's area, and a dedicated teen space.



## University of Minnesota Microbial Cell Production Facility

*Knutson Construction*

Knutson and BWBR are building the University of Minnesota's Microbial Cell Production Facility (MCPF) to expand the Biotechnology Resource Center's research, cell production, and training services, supporting nonmedical bio-industrial research and manufacturing in the U.S. The facility will enhance BRC's capabilities for academic and industry clients.

### **Antlers Park Redevelopment Project** *Loeffler Construction & Consulting*

The Antlers Park project provided expanded parking, a central pavilion, updated restrooms, a community fire pit, an outdoor restaurant, and additional picnic shelters. Recreation amenities like sand volleyball, a playground, lawn games area, and hammock spaces were added, along with the Lake Marion Regional Greenway Trailhead for walking access.



### **Monticello Downtown Roadway & Pedestrian Improvement Project** *Meyer Contracting, Inc.*

The City of Monticello has continued efforts to improve its Downtown for visitors, businesses, and residents by rebuilding the downtown streets. This includes underground utility improvements, sidewalks, improved signage, electrical/lighting, streetscapes, and landscaping. This project included improvements to Walnut Street, West Broadway Street, Pine Street and River Street allowing a safer environment.



### **Apple Valley Fire Station #2** *Terra Construction*

This project replaced the existing Fire Station #2 with a new 27,891 sq ft. facility. The new station includes a two-story operations wing with six pull-through apparatus bays split by a full training tower, decontamination area, turnout gear area, administration spaces, classroom, residential spaces, fitness room, hose tower, and support spaces.





## **HealthPartners Apple Valley** *Gardner Builders*

The building features an Imaging suite showcasing Philips & Siemens Imaging Equipment. Additionally, the MOB has Dental, Optometry, Primary Care, Allergy, Mother Baby, and other associated clinic functions. Of the 60,000 sq ft., 2,050 sq ft. is being utilized as the MRI Suite with a Siemens MRI. This project was based on a Target Value Delivery (TVD).

## **Minnetrissa L24 Renovation** *Maverick Cutting & Breaking*

The Metropolitan Council adopted facility plans for Lift Station L24, Interceptor Force mains 7020 and 7508, which were subsequently approved by the MPCA. These projects aim to address the renewal of aging 50-year-old infrastructure, enhance compliance with modern operational safety standards, and accommodate future growth.



## **Grand Casino Mille Lacs Hotel Renovation** *Sonus Interiors*

Sonus Interiors transformed the Grand Casino Mille Lacs Hotel Lobby with a \$550K decorative ceiling renovation featuring MicroLite! panels. This stunning upgrade specified by Cunningham Architects enhances the ceiling aesthetics, creating a luxurious guest experience. The project reflects precision, innovation, and a commitment to delivering impactful, high-quality design solutions.





# MCA Member Awards

*Every year the Minnesota Construction Association recognizes member companies that make substantial contributions to the community and the association. The General Contractor, Subcontractor, Design Professional and Service Provider of the Year candidates are companies that are current members. Winners are selected by a People's Choice voting process. All members in good standing are given the opportunity to vote for the candidate of their choice.*



## Previous *General Contractor of the Year* Recipients:

- 2024 | Ryan Companies US, Inc.
- 2023 | Kraus-Anderson
- 2022 | McGough Construction
- 2021 | Greystone Construction Company
- 2020 | Adolfson & Peterson Construction



## Previous *Subcontractor of the Year* Recipients:

- 2024 | Frattalone Companies
- 2023 | Quad E. Companies, Inc.
- 2022 | Wells
- 2021 | Rachel Contracting
- 2020 | Meyer Contracting



## Previous *Design Professional of the Year* Recipients:

- 2024 | Emanuelson-Podas
- 2023 | KFI Engineers
- 2022 | Civil Site Group
- 2021 | BKBM Engineers
- 2020 | Loucks

## Previous *Service Provider of the Year* Recipients:

- 2024 | CES Imaging
- 2023 | Braun Intertec Corporation
- 2022 | Orion Search Group
- 2021 | SitesForBuilders.com
- 2020 | American Engineering Testing, Inc.



## MCA Member of the Year

*Members are encouraged to recognize fellow members who deserve special acknowledgment. We look for members who demonstrate a commitment to MCA and its growth, are active in the organization, and have contributed to the success of ongoing or recently completed construction projects. When making the nomination, the proposer must also include a brief statement explaining why the member deserves special recognition.*

## Previous *MCA Member of the Year* Recipients:

- 2024 | Dave Lyste
- 2023 | Paul Kalias
- 2022 | Grant Tentis
- 2021 | Patrick North
- 2020 | Paul Almen



## 2025 MCA Board of Directors



**President**  
**John Petersen**  
Ryan Companies  
US, Inc.

John is the Vice President of Preconstruction overseeing Ryan Companies' national housing sector where he has been since late 2021. At Ryan, John's role drives the preconstruction process and consistency for all housing projects throughout their nine national regions. As a longtime member of MCA, joining in 2002, he first began his involvement by attending events to represent his company but quickly realized the great group of people that make up MCA. The networking, fellowship, and mentorship are priceless, with the events being a great casual atmosphere in which to catch up with peers in the industry and learn about what is new and exciting! John currently chairs the MCA Sporting Clays event and has since 2019. In his free time, he loves to spend time with his wife and two daughters (21) & (15) out at their land near North Branch, MN.



**Vice President**  
**Ryan Klick**  
Kraus-Anderson

Ryan has been with Kraus-Anderson since 2009 and is the Construction Executive overseeing the commercial market sector. He has managed over \$500 million in construction projects across five states. Ryan focuses on building collaborative teams and finding efficient, safe solutions for every project. He has been an active member of MCA for six years, helping establish the Construct\*ium Mentorship Program and coordinating Leadership Training Academy events. Ryan has served on the MCA Board of Directors for the past five years and is currently the Vice President. In his free time, Ryan enjoys spending time at the lake with his wife, Jodi, and their three children: Quinn, Hazel, and Reese.



**Treasurer**  
**Kerry Boyd**  
Smith Schafer &  
Associates

Kerry specializes in the Construction/Real Estate and Professional Service niche groups and is also a member of the Business Valuations team at SSA. Kerry initially joined MCA as part of outreach from his firm to give back to CRE associations. He joined the Awards Committee in 2018 and has been involved ever since. Kerry loves networking and the opportunity to help the association grow as we build towards the future. Kerry looks forward to helping with all aspects of this in his new role as treasurer. In his free time, Kerry coaches traveling baseball for his son. Three years ago, his team won both state championships in baseball playing for Bloomington, which was an amazing experience. He also has twin daughters and enjoys watching their sports as well. His family keeps quite busy, as all three kids play hockey for Eagan; in addition, the girls play traveling softball and traveling soccer. Kerry also enjoys reading, watching movies, and going to Wild games.



*Secretary*  
**Justin Johnson**  
 RJM Construction

Justin is the Corporate MSL/ Director of Preconstruction at RJM Construction. He has been with RJM for 17 years, starting his career as an estimator and now overseeing the preconstruction department at RJM. Justin leads the estimating, MEP, and virtual design teams at RJM while also focusing on corporate market growth. He works on the front end of projects, handling client engagement, negotiations, and preconstruction tasks like bidding and scheduling before transitioning the project to the Operations team. Justin has been an MCA member for over 10 years. Initially, he joined to meet industry professionals and learn more about the industry. Justin continues to be active within MCA due to the relationships built through the years and looks to give back to the construction community through the exciting events MCA offers. Outside of work, Justin enjoys spending time with his wife Jenny and kids (a 10-year-old boy and a 7-year-old girl). He coaches his kids in sports and enjoys golfing, traveling, and listening to vinyl records.



*Past President*  
**Patrick North**  
 SitesForBuilders.com

Patrick helps clients tackle their most difficult communication challenges. He offers a balance of proven strategy, rampant creativity, and streamlined production for print, web, and video. After many years of amazing networking and educational events, the genuine relationships are where Patrick says his MCA membership delivers genuine value. A proud father of two boys, he enjoys spending time exploring the outdoors with his family and friends.



*Director*  
**Aaron Abelleira**  
 Arthur, Chapman,  
 Kettering, Smetak &  
 Pikala, P.A.

Aaron is a construction attorney at Arthur Chapman Kettering Smetak & Pikala in Minneapolis, Minnesota. He focuses his practice primarily on construction law, bringing his clients a unique combination of legal knowledge and hands-on industry experience. Before embarking on his legal career, Aaron spent a decade in the trades as a commercial roofer, giving him a perspective on the challenges faced by contractors, subcontractors, owners, and others in the construction industry. Aaron started his involvement with MCA by participating in the Clay Shoot Committee and has been an active member of that committee for the last two years. Aaron values his relationships with fellow MCA members and looks forward to serving the members on the board of directors. In his free time, Aaron enjoys spending time with his wife and children, playing drums in a punk rock band, and the occasional round of disc golf.



*Director*  
**Matt Bergmann**  
Laketown Electric Corporation

Matt Bergmann has led LEC for the last 14 years and has been the sole owner for the previous five. During his leadership, LEC has grown from a \$2 million company in 2012 with 12 employees to a \$50+ million company in 2024 with 140 employees, making LEC approximately the 7th largest electrical contractor in Minnesota. LEC is a seven-time Inc 5000 winner and seven-time Minneapolis/St. Paul Business Journal Fast 50 award winner. Matt joined MCA 10 years ago to be around like-minded construction leaders and spend more time with customers. He finds the camaraderie and networking with leaders in the industry a valuable aspect of the association.



*Director*  
**David Borak**  
Orion Search Group

David has been a Principal with Orion Search Group since 2005, specializing in recruiting for the construction, engineering/architecture, and real estate development industries. He has been a member of MCA for the past seven years to help support the Minnesota construction industry and finds the networking and educational sessions extremely valuable. David lives in Eagan with his wife and two children. In his free time, he loves watching and playing golf and basketball.



*Director*  
**Dalton Hauer**  
Terra Construction

Dalton is a project manager at Terra Construction with over seven years of experience. When he joined MCA in 2018, he was involved by serving on the Awards Committee and currently serves as a board liaison on the Emerging Professionals Committee. Dalton values the networking opportunities and industry connections that MCA provides. Outside of work, Dalton enjoys golf, travel, cooking, and weekends at the cabin.



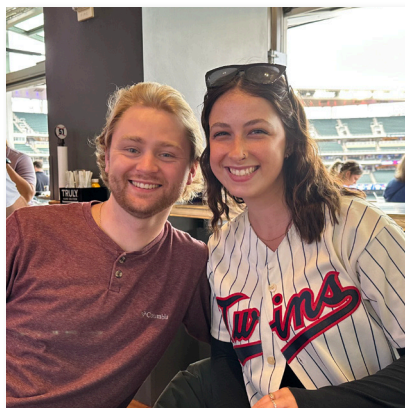
*Director*  
**Leslie Johnson**  
Empirehouse, Inc.

Leslie has worked as a sales manager at Empirehouse, Inc. for eight years. She has been active in MCA for over three years, serving on the Events Committee, and currently holds the chair position. Being an MCA member has allowed her to build meaningful relationships and partnerships within the construction industry. In her free time, Leslie likes walking her dog and playing with him around the house. She also enjoys remodeling their home, ice fishing, game nights with her husband, spending time with friends and family, cooking, gardening, and reading a good James Patterson book.



**Director**  
**Chris Scrabeck**  
 Sonus Interiors

Chris is the Director of Operations for the ceiling division at Sonus Interiors. He works on managing the ceiling division, as well as running projects. Chris joined MCA eight years ago to participate in networking opportunities and educational opportunities. Chris finds value in being able to communicate with other companies on how their companies do business, as well as how their business is navigating an evolving industry. Chris spends his free time raising his four young kids.



**Director**  
**Avery Wade**  
 Gardner Builders

Avery is the Marketing Proposal Specialist at Gardner Builders, where she creates proposals that meet client needs and reflect Gardner's brand. She joined the construction industry in 2021 after graduating college, but her journey began much earlier. At just 16, she started as an office assistant for a local contractor, laying the foundation for her career. While she didn't grow up dreaming of working in construction, she's come to love every piece of the industry now. Over the years, she has focused on making an impact through her work and active involvement in industry associations. Avery joined MCA's Communications Committee in 2022, where she now serves as chair and acts as the communications liaison for the Awards Committee. She is also helping launch the Emerging Professionals Committee to support the next generation of industry leaders. Outside of work, Avery enjoys spending time outdoors—whether it's boating, catching a baseball game, or hanging out at a patio happy hour.



**Director**  
**Adam Winberg**  
 Doran Companies

Adam is a Preconstruction Manager at Doran Companies. He works with Architects, Engineers, Estimators, PMs, and Developers through various stages of a project (entitlements through construction commencement), writing bid scopes, reviewing bids, collaborating with subs and other team members regarding design, establishing schedules and site logistics, and more. Adam's first MCA event was the Awards of Excellence in 2013. He attended in hopes of landing a job. Fortunately, the networking was successful. Following the gala, he accepted a position with Stahl Construction. Adam finds the opportunities to connect with industry professionals the most valuable aspect of MCA. With dynamic events and social gatherings, MCA is a great way to meet others with similar goals and interests in the industry. In his free time, Adam likes to go camping (or rather "glamping") with his wife, Anna, kids, Peyton and Ethan, and dog, Jax. He also enjoys the outdoors, watching his kids in sports and activities, and watching Vikings games.

- Acme Tuckpointing & Restoration  
 Adolfsen & Peterson Construction  
 All In One Accounting  
 Allegion- North Central RSO  
 Allied Blacktop Company  
 American Engineering Testing, Inc.  
 Ames Construction  
 Ancoats, LLC  
 Apex North Business Coaching  
 Arthur Chapman Kettering Smetak & Pikala, P.A.  
 Atlas Foundation Company  
 Automated Logic  
 Bauer Design Build  
 Bay West LLC  
 Ben's Structural Fabrication  
 Bituminous Roadways, Inc.  
 BKBM Engineers  
 Braun Intertec Corporation  
 Bremer Bank  
 Brin Glass Company  
 Brush Masters  
 Builders & Contractors Workers' Compensation Fund  
 BuildingPoint America West  
 Capital One Business  
 Carciofini Company  
 CES Imaging  
 Civil Site Group  
 Clean Response  
 CliftonLarsonAllen LLP  
 Commercial Drywall, Inc.  
 Construction Support Services, Inc.  
 Contech Engineered Solutions  
 Davis & Associates, Inc.  
 Dem-Con Companies  
 Dering Pierson Group  
 Donlar Construction Company  
 Doran Construction  
 DWELL 44- A Modern Design Showroom  
 E&M Coatings  
 Edward Jones  
 Emanuelson-Podas  
 EMC Insurance Company  
 Empire Concrete Cutting & Coring  
 Empirehouse, Inc.  
 EPS- Environmental Plant Services  
 ERoof, LLC  
 Fabyanske, Westra, Hart & Thomson, P.A.  
 Fendler Patterson Construction  
 Fisher, Bren & Sheridan, LLP  
 Frattalone Companies, Inc.  
 G4 Construction Management  
 Gage Bros. Caulking, Inc.  
 Gagnon, Inc.  
 Gardner Builders  
 Gephart Electric  
 Grazzini Brothers & Company  
 Greystone Construction Company  
 H+U Construction  
 Hardscape Construction  
 Herzog Engineering, LLC  
 Holmes Murphy Construction  
 Homeco Insulation  
 IFS  
 INSPEC, Inc.  
 ISG  
 Jamar Company  
 JE Dunn Construction  
 John A. Knutson & Co., PLLP  
 JT EGNER Construction  
 JTH Lighting Alliance  
 Kaas Wilson Architects  
 Kellington Construction, Inc.  
 Kline-Johnson & Assoc.  
 Knutson Construction  
 KOMA  
 Konik  
 Kraemer North America  
 Kraft Mechanical  
 Kraus-Anderson  
 Kremer Davis, Inc.  
 KW Specialty Services LLC  
 LaForce LLC  
 Laketown Electric Corporation  
 Larkin Hoffman  
 Lockton  
 Loeffler Construction & Consulting  
 LRS/Atomic Recycling  
 Mansfield Service Partners  
 Market & Johnson  
 Marsh McLennan Agency  
 Master Technology Group  
 Maverick Cutting & Breaking  
 Mavo Systems  
 McGough  
 Meyer Contracting  
 Minnesota Vinyl & Aluminum, Inc.  
 Modern Piping, Inc. DBA Modern  
 Molin Concrete Products Company  
 Mr. Spring LLC  
 National American University  
 Neaton Brothers Erosion LLC  
 Newton Bonding  
 Nor-Son Construction  
 Northwestern Surveying and Engineering  
 OECS  
 Olympiatech Electric  
 Original Rock Designs, Inc.  
 Orion Search Group  
 Owner-Built Construction Management Services  
 Paris Painting  
 PCL Construction  
 Peterson Sheet Metal  
 Preferred Concrete Construction, Inc.  
 Quad E Companies, Inc.  
 Rachel Contracting  
 Ram Construction Services  
 Ramsey Companies, Inc.  
 Ramy Turf Products  
 Red Cedar Steel Erectors, Inc.  
 Redpath and Company  
 Rise Collaborative Development  
 RJM Construction  
 Rochon Corporation  
 Ryan Companies US, Inc.  
 Scaffold Service  
 Scherber Roll-Offs LLC dba T. Scherber Demolition & Excavating  
 Schreiber Mullaney Construction  
 Shaw-Lundquist Construction  
 SitesForBuilders.com  
 Smith Schafer & Associates  
 Sompo  
 Sonus Interiors  
 Steiner Construction Services, Inc.  
 Structis  
 Structures, Inc.  
 Subsurface Constructors Inc.  
 Sun Control of MN  
 Swanson & Youngdale, Inc.  
 SwedeBro  
 Terra Construction  
 The Boldt Company  
 The Concrete Guy  
 The Horton Group  
 The Whiting-Turner Contracting Company  
 Triple E Water and Sewer  
 U.S. CAD An ARKANCE Company  
 Veit & Company, Inc.  
 Versacon Inc.  
 Vic's Crane & Heavy Haul, Inc.  
 WA Group  
 Wells  
 Willis Towers Watson  
 Wings Financial  
 Wipfli LLP  
 Wiss, Janney, Elstner Assoc.  
 WTG Terrazzo & Tile, Inc.  
 Zachary Construction

*The Minnesota Construction Association is a nonprofit organization that fosters education, recognition and networking for students and industry professionals. We are dedicated to helping students graduate, connect with industry professionals and shape their careers.*

Visit [mnconstruction.org/student-outreach](https://mnconstruction.org/student-outreach) to learn more!

Since 2011,  
MCA has awarded  
**\$104,500 in scholarship funds to 61 students at 15 different colleges** to help achieve their education goals.

**Congratulations to the 2024-2025 recipients of MCA's Annual Scholarships!** Funds are raised from our members at the Annual Scholarship Golf Tournament & Sporting Clay Shoot.



**John White**  
Dunwoody College of Technology



**Garrett Johnson**  
University of Wisconsin-Stout



**Diteu Makoku**  
Dunwoody College of Technology



**Avery Mulholland**  
University of St. Thomas



**Alexa Schraut**  
Dunwoody College of Technology



**Noname Yang**  
St. Paul Technical College



**Jaret Swedberg**  
Northwest Technical College

MCA Proudly Partners with:





MCA had a busy year and **accomplished amazing feats** with the help of our volunteers and members!



### In 2024, MCA . . .

- Raised \$38,500 in annual sponsorships - the highest ever!
- Gained 34 new company members & 41 new student members
- Increased LinkedIn followers by 35.5%
- Held 14 events and raised \$167,035 in registrations
- Achieved a 12.4% increase in company memberships
- Doubled the capacity of our sold-out annual golf tournament
- Drew a total of 893 attendees to events
- Members of the Student Outreach Committee visited four colleges
- Received 71 scholarship applications - the most ever!
- Increased Instagram followers by 39.9%

## SUBMIT CONTENT FOR OUR NEWSLETTER

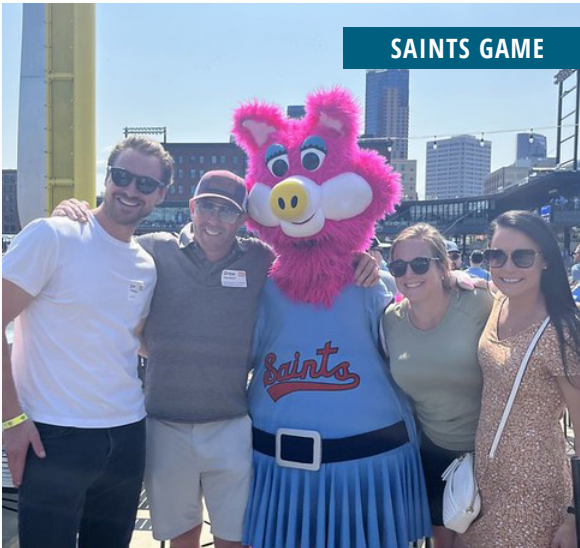


Share your content! **Leverage your membership by sharing your company's story.** We make it easy for you to celebrate accomplishments with your fellow members.

Visit [mnconstruction.org/newsletter](https://mnconstruction.org/newsletter) for guidelines and more information.







SAINTS GAME



BOAT CRUISE



CLAY SHOOT



SOCIAL



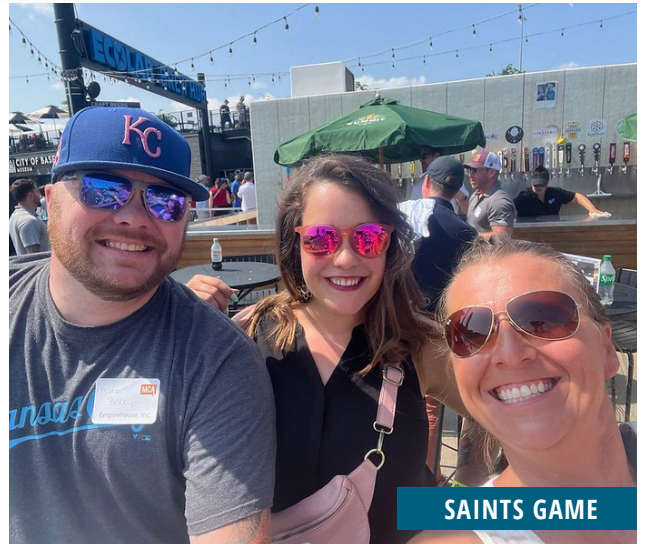
HAPPY HOUR



GOLF



AWARDS



SAINTS GAME

# Save the Dates

▪ EDUCATION ▪ RECOGNITION ▪ NETWORKING

**Education Session: Worker Safety & Underground Utility Locating Law Changes, Effect on the Contracting Community, & Next Steps**  
Tuesday, February 4, 2025

**Meet the Estimators (with MSA & MBEX)**  
Wednesday, February 5, 2025

**MCA Choice Award Tour: Schoenecker Center**  
Tuesday, February 25, 2025

**Education Session: AI Opportunities in Construction**  
Wednesday, March 26, 2025

**Leadership Training Academy**  
Tuesday, April 29, 2025

**Education Session: Changes to the Energy Code**  
Wednesday, May 14, 2025

**17th Annual Scholarship Golf Tournament**  
Wednesday, June 4, 2025

**St. Paul Saints Game Networking Event**  
Wednesday, June 25, 2025

**8th Annual Sporting Clay Shoot**  
Wednesday, September 17, 2025

**12th Annual Social**  
October 2025

**Construction Industry Forecast: The State of the Minnesota Economy**  
November 2025

**MCA has a great lineup of events planned for 2025. Mark your calendars now and visit [mnconstruction.org](https://mnconstruction.org) for additional details and to register.**

# Thank You FOR YOUR SUPPORT!



*Thank you for joining us and to all of our generous sponsors for making this event possible!*