



MINNESOTA  
CONSTRUCTION  
ASSOCIATION

*26<sup>th</sup> Annual  
Awards of Excellence*

January 27, 2021 Virtual

Thank You  
IMMENSELY FOR YOUR SUPPORT!

Event Sponsor

DORAN

Supporting Sponsors



Program Design Sponsor



# 2021 MCA BOARD OF DIRECTORS

President —————



**Dave Lyste**  
*Rachel Contracting*

Vice President —————



**Allie Zeman**  
*Adolfson & Peterson  
Construction*

Past President —————



**Heather Grazzini-Sims**  
*Carciofini Company*

Treasurer —————



**Grant Tentis**  
*Smith Schafer & Associates*

Secretary —————



**Corey Bronczyk**  
*Arthur Chapman Law Firm*

Directors —————



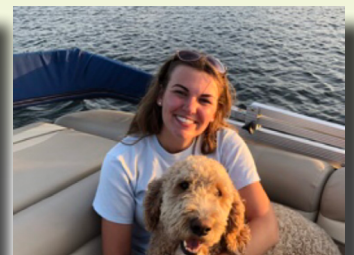
**Matt Bergmann**  
*Laketown Electric  
Corporation*



**Tara Blotske**  
*Ryan Companies US, Inc.*



**David Borak**  
*Orion Search Group*



**Mandy Boyle**  
*Kellington Construction*



**Brett Grendahl**  
*Built Data*



**Ryan Klick**  
*Kraus-Anderson*



**Patrick North**  
*SitesForBuilders.com*



**John Petersen**  
*Doran Construction*

# Special Thanks to...

## Awards Committee

**Dave Lyste—Co-Chair**  
*Rachel Contracting*

**Josh Carr—Co-Chair**  
*Kraus-Anderson*

**Kerry Boyd**  
*Smith Schafer & Associates*

**Melannie Garafola**  
*WTG Terrazzo & Tile, Inc.*

**Dalton Hauer**  
*Terra Construction*

**Ryan Schmidt**  
*American Engineering  
Testing*

**Staff**  
**Jenny Wothe**  
*MCA Executive Director*

## Judges

**Basem Hammami**  
*RSP Architects*

**Jennifer Jackson**  
*JLG Architects*

**Dan Lind**  
*HCM Architects*

**Gaius Nelson**  
*Nelson-Tremain  
Partnership*

**Eric Sahnou**  
*BWBR Architects*

**Amy Schwabe**  
*Trossen/Wright/Plutowski  
Architects*

**Paige Sullivan**  
*Wold A&E*

**Jonny Vliet**  
*Mohagen Hansen*

## SELECTION PROCESS

Each judge voted separately, electronically. In each category, judges rated the entry based on general project information, description of the project, project schedule, safety, cost, and overall project management. Both progress and completed work photos were required with each nomination. Judges were encouraged to make additional comments on their ballot form. Ballots were e-mailed and an MCA volunteer tabulated the results.



**Connect with MCA on  
social media and  
share your stories  
with us!**

Twitter: **@MCAConstruction**

LinkedIn: **Minnesota  
Construction Association**

**#MCA Awards #MNConstruction**



# Welcome & Awards of Excellence Presentation

*Chad Rettke, Awards Emcee*

## Board Presentation & Presidential Acceptance

*Dave Lyste, President*

### Submissions

#### **New Project Total Value Under \$15,000,000** ..... 7-8

- Presbyterian Homes & Services Langton Shores Phase 1—Adolfson & Peterson Construction
- New Hope Pool and Aquatic Center—Donlar Construction
- Linden Building/44 Commons—Kellington Construction
- MSP 2019 Baggage Claim/Ticket Lobby Operational Improvements—Maverick Cutting & Breaking
- Graze Provisions + Libations—Rochon Corporation
- IBEW Local - 292 Corporate—Ryan Companies US, Inc.

#### **New Project Total Value Over \$15,000,000** ..... 9

- Chisago Lakes Lakeside Elementary—Donlar Construction
- EXPO—Doran Companies
- Omni Viking Lakes Hotel—Kraus-Anderson

#### **Renovation, Expansion or Tenant Improvement Project** ..... 10-11

- Richardson Elementary Addition and Remodel—Adolfson & Peterson Construction
- Toppan Merrill Office & Warehouse—Donlar Construction
- Riverdale Church - Interior Remodel—KOMA
- Gundersen Health System - Winona Campus—Kraus-Anderson
- University of Minnesota Plant Growth Research Facility—Loeffler Construction
- Marsh & McLennan Agency—Rochon Corporation
- Rand Tower Tribute Hotel—Ryan Companies US, Inc.
- Kiewit Minneapolis—Terra Construction

**Government Construction** ..... 12-13

- McLeod Cooperative Power New Facility—Adolfson & Peterson Construction
- Minneapolis Community and Technical College Student Affairs Renovation—Donlar Construction
- Wildwood Library—Kraus-Anderson
- Prodeo Academy—Rochon Corporation
- Bemidji State University Hagg-Sauer Hall—Terra Construction

**Research, Innovation or Use of Technology** ..... 14

- Fire Prevention System Installation with Fire Rover—Atomic Recycling

**MCA Choice Award** ..... 15

- The HERO Center—RJM Construction

**Member Awards** ..... 16-17

- General Contractor of the Year
- Subcontractor of the Year
- Design Professional of the Year
- Service Provider of the Year
- Member of the Year

**MCA Directory** ..... 18

**Construct\*ium** ..... 19

**News** ..... 20

**Save the Dates** ..... 21

### **Presbyterian Homes & Services Langton Shores Phase 1 *Adolfson & Peterson Construction***

The project consists of 50 beds of hospitality level transitional care therapy suites. Construction of Phase 1 was completed in the existing parking lot adjacent to the existing Care Center on the Presbyterian Homes Langton Place campus. Langton Phase 1 is AP Minnesota's 16th project with Presbyterian Homes since 1997.



### **New Hope Pool and Aquatic Center *Donlar Construction***

The New Hope Pool is an outdoor Aquatic Center featuring a 50-meter lap pool, a speed and flume water slide, a current channel and vortex pool, and a recreation zero-depth splash pool. The Aquatic Center includes a bathhouse building with showers/restrooms, office space, and a concession counter.



### **Linden Building/44 Commons *Kellington Construction***

The Linden Building is a new four-story commercial mass timber office building. Kellington Construction installed the mass timber Glulam beams and columns and the panels for the floor and roof decks. Kellington Construction also completed the finish carpentry, casework, doors, hardware, and specialties.



## **Minneapolis Airport 2019 Baggage Claim/Ticket Lobby Operational Improvements** *Maverick Cutting & Breaking*

An ellipse opening was a renovation to the existing slab of a corridor to create an opening to the lower level at the Minneapolis Airport. The ellipse was carefully cut using a variety of different saws to finish off the precise cut.



## **Graze Provisions + Libations** *Rochon Corporation*

Graze Provisions & Libations is a food collective providing an innovative dining concept in Minneapolis. Located at the corner of 4th St and 5th Ave, the new building includes 6 individual kitchens, 2 bars, and a café. Graze attracts a wide range of clientele from the foodies to the pre-gamers.



## **IBEW Local - 292 Corporate** *Ryan Companies US, Inc.*

IBEW was experiencing growing pains in their leased headquarters. It was time to make the leap to owning their building, with space for meetings and trainings, as well as land for the annual picnic and parking. Given our relationship, they turned to Ryan to construct the 26,630 SF single-story building.





## **Chisago Lakes Lakeside Elementary** *Donlar Construction*

Lakeside Elementary is a newly constructed elementary in Chisago Lakes that shares the name of its predecessor. The new elementary features 45 new classrooms, a new district office, a gymnasium, cafeteria, and library. The K-5 facility is designed to hold 600 students for a growing district.



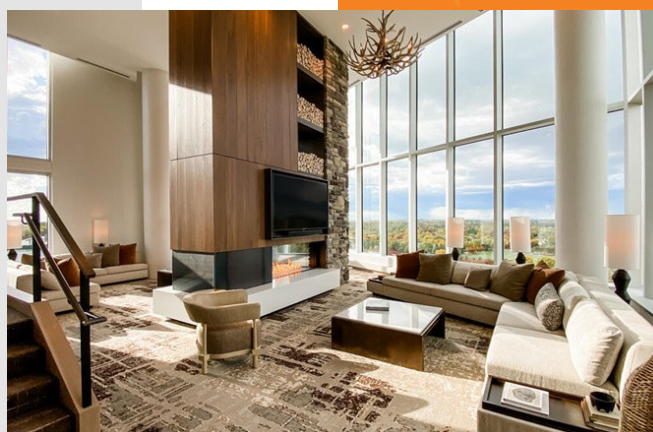
## **EXPO** *Doran Companies*

EXPO, a 787,125 square-foot development, consists of 369 units in a 25-story post tensioned tower and a 5-story wood framed mid-rise building located in the St. Anthony Falls district. The property contains alcoves, one-, two- and three-bedroom apartments, a penthouse collection, and direct-entry townhomes, all with access to unrivaled amenities.



## **Omni Viking Lakes Hotel** *Kraus-Anderson*

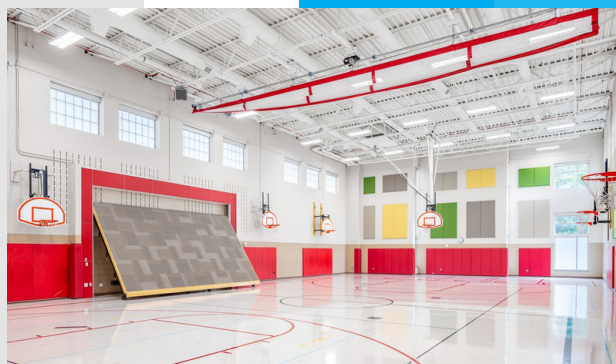
The Omni Viking Lakes Hotel is the mainstay of the Viking Lakes mixed-use development project that includes the TCO Performance Center for the Minnesota Vikings. The 14-story, 320-key hotel features an event space, spa, fitness center, three dining options, and other luxurious amenities.





## **Richardson Elementary Addition and Remodel** *Adolfson & Peterson Construction*

Richardson Elementary was built in 1954 and needed updates. Construction included: safety updates, system updates, site improvements and renovations and expansion. The new addition was completed for students to start school in the fall. This now allows for a Pre-K area, gym extension, and new administrative areas and classrooms.



## **Toppan Merrill Office & Warehouse** *Donlar Construction*

The Toppan Merrill Office & Warehouse Addition was a renovation and expansion of Toppan Merrill's Sartell location. The project consisted of a new 56,519 Sq. ft. expansion to their warehouse and a 13,500 SF office addition. The addition includes conference rooms, office space for 100+ cubicles, and 6 loading docks.



## **Riverdale Church - Interior Remodel** *KOMA*

The interior remodel of Riverdale Church involved a daycare conversion into ministry children areas & classrooms, reconfiguration of offices, a new café with seating and small break-out areas, remodel of the entrance lobby & sanctuary entry. The gym was also reconfigured and reduced in size to accommodate additional classrooms and performance spaces.



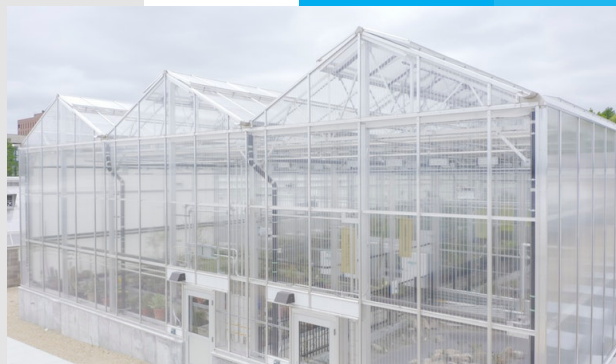
## **Gundersen Health System - Winona Campus** *Kraus-Anderson*

Kraus-Anderson renovated a former Winona Kmart building into a Gundersen Health System clinic with a full range of services. The 86,000-square-foot clinic includes primary care, urgent care, infusion services, retail pharmacy, lab, imaging services, and an outpatient surgery center. The clinic provides much-needed medical care for the Winona community.



## University of Minnesota Plant Growth Research Facility *Loeffler Construction*

This first-of-its-kind greenhouse merged research and a designated public conservatory space under one roof with four separate biome environments and state-of-the-art greenhouse technologies. The project's success hinged on Loeffler coordinating the phasing near occupied spaces and the extensive number of infrastructure tie-ins required to support the new addition.



## Marsh & McLennan Agency *Rochon Corporation*

The newly finished, 45,000 SF single story office is located north of 394. The renovation of this pre-existing dark office/warehouse suite was transformed into a bright workplace environment. The team incorporated multiple amenities for both employee wellness and collaboration, including a large café, training rooms and a gym.



## Rand Tower Tribute Hotel *Ryan Companies US, Inc.*

Rand Tower has been a Minneapolis landmark since 1929. By the 21st century, this National Registered Historic office tower was outdated compared to its modern downtown neighbors. In 2017 the process began to convert Rand into a Marriott Tribute Hotel and restore its local prominence. The hotel opens December 2020.



## Kiewit Minneapolis *Terra Construction*

This project involved the buildout for Kiewit's new Minnesota office space. The Minneapolis business units of Kiewit, Cherne Contracting and Ibberson now occupy the 29,000 sf space located in the Norman Point 1 building in Bloomington, MN. The project consisted of offices, training, conference and workroom space, breakroom and restrooms.





## **McLeod Cooperative Power New Facility** **Adolfson & Peterson Construction**

Project is a 62,630 sf new corporate headquarters. The facility includes 12,090 sf of office space, with 50,540 sf warehouse/garage/mezzanine space. Warehouse includes a wash bay, mezzanine, fleet parking, laundry, and electrical/mechanical/water service spaces. Site work includes retainage pond, asphalt parking, drive lanes, concrete aprons, gravel pull yard, and landscaping.



## **Minneapolis Community and Technical College Student Affairs Renovation** **Donlar Construction**

The Minneapolis Community and Technical College Student Affairs Renovation is a 43,000 sq. ft. remodel. Located in downtown Minneapolis, this multi-phase project includes offices, presentation spaces, student service counters and help center, accounting and onboarding services, and customer services.



## **Wildwood Library** **Kraus-Anderson**

Kraus-Anderson constructed the new Wildwood Library facility in Mahtomedi. The team worked closely with Washington County and HCM Architects to design a modern, open library that will serve the community for years to come. The 12,000-square-foot space has flexible seating, meeting space, and technology access with ample natural light.



### **Prodeo Academy** **Rochon Corporation**

A 72,000 SF Charter School that includes 41 classrooms, 15 pullout spaces, a large gymnasium, a serving kitchen, outdoor play space, and more. Prodeo Academy is part of a network of college preparatory charter schools that help students develop skills and expand their opportunities to positively contribute to the society.



### **Bemidji State University Hagg-Sauer Hall** **Terra Construction**

This project involved the demolition of the existing 82,500 sf Hagg-Sauer Hall and construction of a new 27,739 sf academic learning center. The new Hagg-Sauer Hall provides flexible teaching spaces, active learning classrooms, upgraded faculty offices, multi-purpose labs and collaborative spaces impacting 14 different college programs.



## **Fire Prevention System Installation with Fire Rover *Atomic Recycling***

Atomic Recycling and the C&D recycling facility worked with Fire Rover to install an innovative fire prevention system that detects and extinguishes potential fires before they start. The benefit of this technology is that Fire Rover monitors 24/7 so that the building is protected even when no one is around.







## The HERO Center *RJM Construction*



The Minnesota Construction Association would like to announce the recipient of the 2021 Choice Award. RJM is the award winner for the HERO Center project in Woodbury, MN.

The HERO Center (Health & Emergency Response Occupations) training center in Cottage Grove is a 47,000-square-foot facility that will be a magnet for federal, state and local law enforcement officers. The center has training areas for all types of personnel including first responders, fire fighters and police. The center also includes a 2-acre training area for police dogs. The Center has areas that can be easily changed (walls, doors, or windows) for officers to see different situations.

This was a B3 Sustainable Project that had requirements for the project to have a minimum of 75% waste divergent which was achieved.

The project was unique in the way it brought two different cities (Woodbury & Cottage Grove) and the state of Minnesota for its funding needs. The project had multiple city representatives heavily involved in the project that displayed great teamwork.

With the building having two different shooting ranges, there will be a lot of ballistic material present which requires a specialty HVAC system.

## MCA Member Awards

*Each year the Minnesota Construction Association recognizes member companies that make substantial contributions to the community and the association. The MCA General Contractor, Subcontractor, Design Professional and Service Provider of the Year candidates are companies who are current members. Winners are selected by a People's Choice voting process at the end of each year. All members in good standing are given the opportunity to vote for the candidate of their choice.*

### Previous **General Contractor of the Year** Recipients:

- 2020 | Adolfson & Peterson Construction
- 2019 | Greiner Construction
- 2018 | RJM Construction
- 2017 | Doran Construction
- 2016 | Doran Construction



### Previous **Subcontractor of the Year** Recipients:

- 2020 | Meyer Contracting
- 2019 | Atomic Recycling, LLC
- 2018 | VEIT
- 2017 | Rachel Contracting
- 2016 | Rachel Contracting



### Previous **Design Professional of the Year** Recipients:

- 2020 | Loucks
- 2019 | BKBM Engineers
- 2018 | KOMA
- 2017 | Wenzel Engineering, Inc.





## Previous **Service Provider of the Year** Recipients:

- 2020 | American Engineering Testing, Inc.
- 2019 | Braun Intertec Corporation
- 2018 | BROCK WHITE
- 2017 | Cobb Strecker Dunphy & Zimmermann, Inc.



## MCA Member of the Year

*Members are encouraged to recognize other MCA members who deserve special acknowledgment. We look for members who demonstrate a commitment to MCA and its growth, are active in the organization, and have contributed to the success of ongoing or recently completed construction projects. When making the nomination, the proposer must also include a brief statement explaining why the member deserves special recognition.*

## Previous **MCA Member of the Year** Recipients:

- 2020 | Paul Almen
- 2019 | Heather Grazzini-Sims
- 2018 | Allie Zeman
- 2017 | Alana Sunness Griffith
- 2016 | Brett Grendahl



Ace Electrical Contractors, Inc.	Gephart Electric	Opus Design Build, L.L.C.
Adolfson & Peterson Construction	Grazzini Brothers & Company	Orion Search Group
American Engineering Testing, Inc.	Greiner Construction	Peterson Sheet Metal
Anderson Companies	Greystone Construction Company	Pro Maintenance, Inc.
Arthur Chapman Kettering Smetak & Pikala, P.A.	H+U Construction	Progressive Building Systems
Atomic Recycling, LLC	Hilltop Trailers	Quad E Companies, Inc.
Bauer Design Build	INSPEC, Inc.	Rachel Contracting
Best & Flanagan LLP	JE Dunn Construction	Redpath and Company
Bio Clean Environmental	Johnson Controls Fire Protection, LP	RJM Construction
BKBM Engineers	Kellington Construction, Inc.	Rochon Corporation
Braun Intertec Corporation	Kendell	Ruehl + Associates
Built Data	Kline-Johnson & Assoc.	Ryan Companies US, Inc.
Carciofini Company	KOMA	SitesForBuilders.com
Central Roofing	Kraft Mechanical	Smith Schafer & Associates
CES Imaging	Kraus-Anderson	Sonus Interiors
Civil Site Group	Laketown Electric Corporation	Steiner Construction Services, Inc.
Clean Response	Landmark Development	Stone Systems of Minnesota
CliftonLarsonAllen LLP	Larkin Hoffman	Sun Control of Minnesota, Inc.
Commercial Drywall, Inc.	Larson King, LLP	Terra Construction
Construction Support Services, Inc.	Loeffler Construction & Consulting	The Caulkers Company
CSDZ LLC	Marsh & McLennan Agency	Thompson Tarasek Lee-O'Halloran PLLC
Davis Mechanical Systems	Maverick Cutting & Breaking	United States Mechanical, Inc.
Donlar Construction Company	Mavo Systems	Unlimited Exteriors, LLC
Doran Construction	McGough Construction	Veit & Company, Inc.
EDS Builders	Meyer Contracting	Versacon Inc.
Emanuelson-Podas	Molin Concrete Products Company	Victaulic Company
Empirehouse, Inc.	Newton Bonding	Viking Fire Sprinkler Group
Fabyanske, Westra, Hart & Thomson, P.A.	Northern Technologies, LLC	Wells Concrete
Frattalone Companies, Inc.	Northwestern Surveying and Engineering	WTG Terrazzo & Tile, Inc.
	OECS	



*Infusing collaboration into the industry with students, professors and industry professionals who are passionate about better ways to work together.*

There are a lot of professionals who work together to construct our built environment. Rapidly changing practices in each trade and profession require greater **collaboration** than ever to achieve remarkable outcomes.



*How does a student or young professional get up to speed? How do they meet other professionals? How do they get mentorship to help propel their careers and make a difference?*

The MCA evolved our Student Outreach to address these questions. This resulted in Construct\*Ium.

**Construct\*Ium is a unique and market leading collaboration of students, schools, professors and industry professionals to improve how people work together in the built environment.**

for more information visit <https://mnconstruction.org/constructium/> or reach out to [info@constructium.org](mailto:info@constructium.org)

**“We are all great, when we COLLABORATE!”**

CONSTRUCT\*IUM™ is proudly sponsored by:





# BLOG SUBMISSIONS *NEEDED*



Submit your company blogs and articles to be featured on the MCA website and social media!

Hopefully you have had a chance to explore the new MCA website. One of the ways we want to keep it fresh is to offer our members the opportunity to showcase news, relevant stories, or interesting articles on our blog page. Each month, our goal is to feature a member's special project, company, or event that they want to share on the MCA website and social media platforms. This will provide valuable exposure for your company and give you the opportunity to engage new customers.

We're excited to provide fun and interesting content for our members written by our members!

---

## Guidelines:

- Must be a current MCA company member
- Content must be fun, new, & relevant to the construction industry
- No limit to number of submissions

## Questions?

Email [info@mnconstruction.org](mailto:info@mnconstruction.org)

# Save the Date(s)

■ EDUCATION ■ RECOGNITION ■ NETWORKING

**How to Attract and Retain the “A” Players–Panel Discussion**  
Tuesday, February 10, 2021

**MCA Virtual Trivia**  
March 3, 2021

**Leadership Training Academy**  
April 27, 2021

**Collaboration Panel Discussion**  
April 2021

**Risk and Safety Education Session**  
July 2021

**Annual Golf Tournament**  
June 2, 2021

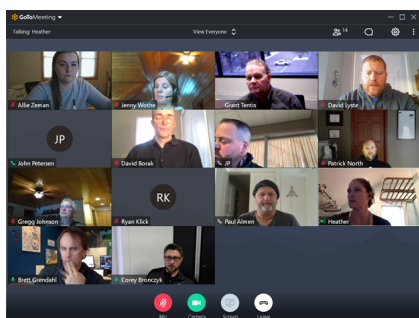
**Saints Game Networking Event**  
August 2021

**Construction Accounting–Mistakes We Make**  
September 2021

**Construction Industry Forecast–The State of the Minnesota Economy**  
Wednesday, October 13, 2021

**4th Annual Sporting Clay Shoot**  
October 13, 2021

**8th Annual Soiree**  
November 2021



**MCA has a great line-up of events planned for 2021. Mark your calendars now and visit [www.mnconstruction.org](http://www.mnconstruction.org) for additional details and registration.**

# NETWORKING EDUCATION RECOGNITION



4248 Park Glen Road | Minneapolis, MN 55418

**p** 952.9228.4646 | **f** 952.929.1318

info@mnconstruction.org | **mnconstruction.org**

 @MCAConstruction

 Minnesota Construction Association