



MINNESOTA
CONSTRUCTION
ASSOCIATION

CONSTRUCTION VIEWS

— OCTOBER 2020 —

CONTENTS

- MCA Awards of Excellence | 1
- President's Column | 2
- Board of Directors | 2
- New Members | 3
- Calendar of Events | 4
- Submit Your Company Blogs and Articles | 4
- MCA Scholarship Golf Tournament | 5
- MCA 7th Annual Soiree | 6
- Construction Industry Forecast | 7
- COVID-19 Resources | 7
- Ask Ms. Awards | 8
- 3rd Annual MCA Sporting Clays Event | 9
- Member to Member | 10

Mission: The Minnesota Construction Association fosters education, recognition and networking for all industry professionals who collaborate, plan, create and sustain best construction practices.

Vision: The collaborative place for the building industry.

AWARDS OF EXCELLENCE



Each year the Minnesota Construction Association (MCA) recognizes construction projects and members that make substantial contributions to the community and the Association. Join MCA for an exciting night of networking, catching up with fellow construction professionals, delicious dinner, and award ceremony at the annual MCA Awards of Excellence Gala!

JANUARY 27, 2021 | 5:30 - 9:00 PM | MINNEAPOLIS MARRIOTT WEST

PROJECT EXCELLENCE AWARDS

Nominations will be accepted from MCA Members in good standing during 2020 and 2021. Contractors and Subcontractors/Specialty Contractors are invited to nominate a project completed between 2018 and 2020. The project must be substantially completed when nominated.

Early bird entry fee is \$250 if paid on or before November 13, 2020. Entry fee is \$350 if paid November 14 – December 4, 2020. All entries must be fully submitted and paid by December 4, 2020 to be judged.

PROJECT CATEGORIES:

- New Project Total Value Under \$15 Million
- New Project Total Value Over \$15 Million
- Renovation, Expansion or Tenant Improvement Project
- Government Construction Project
- Research, Innovation or Use of Technology
- Subcontractor/Specialty Contractor Project

► [Click here](#) to login or create an account and submit your nomination online.

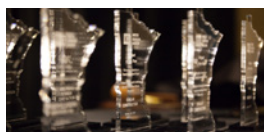
► REGISTER NOW!

Registration Deadline is Friday, January 15, 2021. Please register online in advance; onsite registration will not be available.

► [Printer-Friendly Registration](#)

EARLY BIRD (Ends January 15)	REGULAR (January 16 until sold out)
Member: \$90	Member: \$110
Nonmember: \$100	Nonmember: \$120
Table of Four (4): \$360	Table of Four (4): \$440

Due to current COVID-19 social distancing requirements only four (4) attendees will be permitted per table. Also note: space is limited this year to meet social distancing requirements, so register early to ensure your spot at the 2021 MCA Awards of Excellence Gala!



View Annual Awards Gala sponsorship opportunities on [page 8](#).



Education. Recognition. Networking.



PRESIDENT'S COLUMN

Heather Grazzini-Sims
Carciofini Company

Finding the Best in What's Available.

The current state of the world has impacted our industry in many ways. Fortunately, in Minnesota the Governor considered construction operations essential; however, many other industries considered non-essential were shut down. This greatly impacted our industry and the future of construction. It forced private lenders to pull back financing which created new projects delays, manufacturer delays in material for current construction projects, and forced some industries to stop hiring contractors to build new properties. This trickle-down effect has caused construction companies to make budget cuts and layoff those "essential workers." Accordingly, we lost nearly 20 percent of our membership in the first half of 2020 due to companies' budget cuts.

When I was elected the 2020 President of the Minnesota Construction Association, I expected to have an exciting year. 2020 was supposed to be filled with a fast-paced and healthy construction economy. As the MCA President, along with a committed executive board and board of directors, my goal for our association is to build our network of volunteers. This would build bigger and better events, generate value for all our members, and grow membership. Although our volunteer campaign was put on hold in addition to some of our first quarter events, I am proud of the volunteers who planned and executed worthwhile events in the second and third quarter of 2020. We adjusted our goals to make our events fun and safe for everyone.

- **We hosted two virtual education events.** In July, a panel of legal and safety experts discussed preparing for job site tragedies and the steps of handling various incidents. In September we hosted a panel of subcontractors who shared their experience and knowledge in creating successful partnerships with general contractors.
- **Our 12th Annual Scholarship Golf Tournament sold out.** Although we could not have an awards dinner at the golf club, Atomic Recycling hosted a delicious BBQ after a beautiful day of golf. Additionally, members connected at our Happy Hour at Floyd's Bar.
- **Our 3rd Annual Sporting Clays Event at the Horse and Hunt Club was a success.** Members had a great time shooting clays and catching up with industry friends over Happy Hour.
- **November will include our 7th Annual Soiree and a virtual education session.** On November 4th at the Minneapolis Marriott West, join us for a night of socially distanced networking with industry friends, appetizers, drinks and an exciting program! Also, on November 12th, you are invited to the Annual Construction Industry Forecast: The State of the Minnesota Economy in conjunction with the Minnesota Subcontractors Association. Ron Wirtz from the Federal Reserve Bank of Minneapolis will discuss COVID's impact on the construction sector and broader economy.

In this extremely weird year, where the rules are changed more often than a baby's diaper, it has been a pleasure to serve you all as the 2020 MCA President. I am optimistic for 2021 and the transition to our new MCA President in January. I wish the very best to all of you, personally and professionally.

MCA 2020 BOARD OF DIRECTORS

PRESIDENT

Heather Grazzini-Sims
Carciofini Company

VICE PRESIDENT

Dave Lyste, P.E.
Rachel Contracting

TREASURER

Grant Tentis, CPA, MBT, CVA
Smith Schafer & Associates

SECRETARY

Allie Zeman
Adolfson & Peterson
Construction

PAST PRESIDENT

Paul Almen
Ryan Companies US, Inc.

DIRECTORS

David Borak
Orion Search Group

Corey Bronczyk
Arthur Chapman Kettering
Smetak & Pikala, P.A.

Brett Grendahl
Grendahl Mechanical

Gregg Johnson
Landmark Development
Services Company, LLC

Ryan Klick
Kraus-Anderson

Patrick North
SitesForBuilders.com

John Peterson
Doran Construction

STAFF

Jenny Wothe
Executive Director

Jenny Howard
Website & Marketing Manager



**MINNESOTA
CONSTRUCTION
ASSOCIATION**

Education. Recognition. Networking.

**Please help MCA welcome our newest
MEMBER:**

VIKING FIRE SPRINKLER GROUP

For more than 80 years, Viking Automatic Sprinkler Co. has forged an unparalleled reputation for excellence in the design, fabrication, installation and maintenance of fire protection systems. Viking's project experience is national, their specialized capabilities are virtually unlimited, and they're the largest fire protection company in the Upper Midwest.

Viking offers a complete range of services from their headquarters in St. Paul, Minnesota, which is housed with design engineers, project managers and fabrication professionals whose focused and carefully coordinated efforts will provide the most efficient and timely response to your fire protection needs.

vikingsprinkler.com

**Please help MCA welcome our newest
STUDENT MEMBER:**

ST. CLOUD STATE UNIVERSITY

Hunter Wieczorek

CALENDAR OF EVENTS

WEDNESDAY, NOVEMBER 4

7th Annual Soirée

THURSDAY, NOVEMBER 12

Education: Construction Industry Forecast – The State of the Minnesota Economy

WEDNESDAY, JANUARY 27

Awards of Excellence Gala



Find more information
on MCA events at

www.mnconstruction.org/calendar

SUBMIT YOUR COMPANY BLOGS & ARTICLES



Submit your company blogs and articles to be featured on the MCA website and social media!

One of the ways we want to keep the new MCA website fresh is to offer our members the opportunity to showcase news, relevant stories, or interesting articles on our blog page. This will provide valuable exposure for your company and give you the opportunity to engage new customers. We're excited to provide fun and interesting content for our members written by our members!

[CLICK HERE](#)

TO SUBMIT YOUR COMPANY BLOGS & ARTICLES FOR FALL/WINTER 2020

– SUMMER 2020 BLOGS –



10 Contractor Questions About COVID-19 >>



Build Me Up: Sam Ebute and the Power of Resilience >>



9 Construction Tax Strategies >>

— LOOK OUT FOR AN UPDATED NEWSLETTER COMING IN 2021! —

Construction Views is revamping to ensure you get the most value and relevant content on the MCA and construction community.

Have press releases or company announcements? Did someone in your company get hired or promoted? What projects are you working on? How are you helping the community? We want to know! Complete the [Newsletter Content forms](#) to be featured in upcoming newsletters.



Visit the MCA website for guidelines and more information.



MCA Scholarship Golf Tournament

A TRIUMPH OF SUCCESS

On Wednesday, August 19th, the MCA hosted its 12th Annual Scholarship Golf Tournament at Deer Run in Victoria, MN. The organization filled the course with construction industry professionals. The popularity and success of this event continues to hold strong, even with this year's COVID-19 pandemic. Deer Run is ever accommodating and had protocols in place to keep us distanced and safe. With their high spirits and positive attitudes, everyone involved enjoyed the gorgeous weather and impeccable greens. Different from years past, we had staggered tee times and an outdoor cookout at Floyd's Bar.

A big thanks to Atomic Recycling for their culinary contributions! Although we couldn't have course

contests or raffle items, the event was a huge success! Congratulations to the winning teams of 2020, listed below. The true winners will be the scholarship recipients who benefit from the funds raised by this event. Thank you to everyone involved!

WINNING TEAMS:

1st Place Team: 3B Tom Brown, Ben Newlin, Jason Whiting and Derrick Whiting of Terra Construction

6th Place Team: 9A Chris Scrabeck (Sonus Interiors), Jason Plumley (Sonus Interiors), Matt Wagner (Sever Construction), Tyler Johnson (Sever Construction)

12th Place Team: 8A Dave Lyste, Aaron Berning, Ron Fricke, and Drew Tuomisto of Rachel Contracting

MANY THANKS TO OUR 2020 SPONSORS FOR THEIR GENEROUS SUPPORT!

EVENT SPONSORS

Larkin Hoffman
ATTORNEYS

VEIT

PREMIUM HOLE SPONSORS

- Braun Intertec
- CSDZ
- Doran Construction
- Greiner Construction
- INSPEC, Inc.
- Kellington Construction, Inc.
- Laketown Electric Corporation
- Maverick Cutting and Breaking

- Mavo Systems
- Meyer Contracting
- Rachel Contracting
- Sonus Interiors
- Terra Construction
- Versacon, Inc.
- Wells Concrete

HOLE SPONSORS

- Bituminous Roadways, Inc.
- Flynn Companies

LUNCH SPONSORS

- American Engineering Testing, Inc.
- Carciofini Company
- Orion Search Group

REGISTRATION TABLE SPONSOR

- CES Imaging

DRIVING RANGE SPONSOR

- Atomic Recycling

GOLF CART SPONSORS

- Arthur, Chapman, Kettering, Smetak & Pikala, P.A.
- Commercial Drywall, Inc.
- Hays Companies Construction Risk Division

PUTTING GREEN SPONSOR

- Clean Response

YOU'RE INVITED TO MCA'S

7th Annual Soiree

for a fun night of networking with industry friends,
appetizers, drinks and an exciting program!

NOVEMBER 4, 2020 | 4:30 PM - 7:00 PM

Minneapolis Marriott West
9960 Wayzata Blvd, Minneapolis, MN 55426

Registration:

Each attendee will receive one free drink ticket. Appetizers and a cash bar will be available. Bonus – if you are an MCA member and pay for a guest from a non-member company, you will get entered into a drawing for a \$100 gift card!

Cost: Member – \$40 | Non-member – \$40

► **REGISTER NOW**

Sponsorship:

- Signage & Graphics – **SOLD OUT!**
- Beverage – **SOLD OUT!**
- Food (only 2 left!) – \$125
- The Swag – **SOLD OUT!**
- Mask – **SOLD OUT!**
- Audio/Visual – **SOLD OUT!**

► **BECOME A SPONSOR**



THANK YOU 2020 SPONSORS!

SIGNAGE & GRAPHICS SPONSORS

- Adolfson & Peterson Constuction
- CES Imaging

BEVERAGE SPONSORS

- American Engineering Testing
- Bio Clean Environmental
- Commercial Drywall, Inc.
- Veit & Company, Inc.

THE SWAG SPONSORS

- Ace Electrical
- Hays Companies of Minnesota
- Orion Search Group

FOOD SPONSORS

- Bauer Design Build
- CliftonLarsonAllen
- CSDZ
- Rochon Corporation

MASK SPONSOR

- Arthur Chapman Kettering Smetak & Pikala, P.A

AUDIO/VISUAL SPONSORS

- Carciofini Company
- Northwestern Surveying & Engineering



Construction Industry Forecast: THE STATE OF THE MINNESOTA ECONOMY

- When:** Thursday, November 12, 2020 from 8:00 – 9:00am
- Where:** Via Zoom – A link will be sent to all those pre-registered a week prior to the event
- Cost:** MCA or MSA Members – \$10 | Non-members – \$20

OVERVIEW

Using recent surveys by the Minneapolis Fed, as well new, real-time metrics of consumer behavior, Ron will discuss COVID's impact on the construction sector and broader economy, including effects on both firms and workers. With the help of an interactive remote survey tool, Ron will also gauge the pandemic's impact among attendees, and their outlook for the remainder of 2020 and early 2021.

SPEAKER

Ron Wirtz
Federal Reserve Bank of Minneapolis

► [Click here](#) for full bio



[CLICK HERE TO REGISTER!](#)



COVID-19 RESOURCES

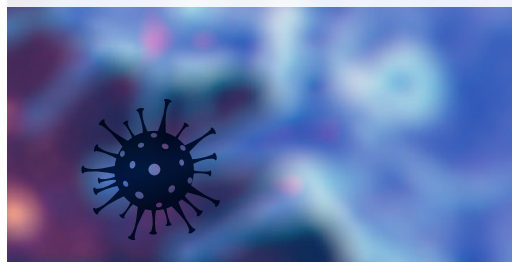
The past several months have not been “business as usual”; the COVID-19 pandemic has forced us to reconstruct the way we conduct business and think out of the box in order to remain successful. To support our members, we created a [COVID-19 Resources page](#) on the MCA website. If you are in need of support, please check out those resources or email info@mnconstruction.org.



[COVID-19 Resources Page](#)



info@mnconstruction.org





MINNESOTA
CONSTRUCTION
ASSOCIATION

AWARDS OF EXCELLENCE



Become A Sponsor

You can help make the Annual Awards Gala a night to remember by becoming a sponsor!

SPONSORSHIP OPPORTUNITIES:

- Event Sponsor – \$750
 - Drink Ticket Sponsor (3 available) – \$625
 - Dinner Sponsor – \$550
 - Reception Sponsor – \$350
 - Dessert Sponsor – \$250
- To become a sponsor, please complete the [Awards Sponsorship Form](#) and return it by January 8, 2021.
- [Printer-Friendly Sponsorship Form](#)

THANK YOU 2021 SPONSORS!

EVENT

DORAN

CAT MODEL

RACHEL

SIGN PRINTING

- CES Imaging

SIGN & PROGRAM DESIGN

- Adolfson & Peterson Construction

PROGRAM PRINTING

- Kraus-Anderson

RECEPTION

- SitesForBuilders.com
- Terra Construction

CLICK HERE



for more details on the 2021 Awards of Excellence Gala

ASK Ms. Awards

Dear Ms. Awards,

With our new normal that is COVID-19 and the uncertainty of public events in the coming months, are there talks of postponing the MCA Awards of Excellence Gala or possible restrictions that will be put into place?

*Sincerely,
Mr. Nomination*

Dear Mr. Nomination,

Currently the gala is still scheduled to take place on Wednesday, January 27th. Award entries, sponsorship opportunities, and registration are now open! Due to current COVID-19 social distancing requirements only four (4) attendees will be permitted per table. Additionally, space is limited to meet social distancing requirements, so register early to ensure your spot at the 2021 MCA Awards of Excellence Gala!

**Sincerely,
Ms. Awards**



3RD ANNUAL MCA SPORTING CLAYS EVENT WAS A HIT!

On Wednesday, October 21, the MCA hosted its 3rd Annual Sporting Clays Event at the Horse and Hunt Club in Prior Lake, MN. Over 100 construction professionals gathered to network with members, compete in shooting clays, connect with peers at Happy Hour, and win prizes. The late October day was a beautiful snowy wonderland. Participants enjoyed the 18 station, 75 clay format.

PRIZES WERE GIVEN:

Tied for Top Gun of the Year with a score of 72/75

- Nate Niemann, Anderson Companies
- Jake Boerboon, Kraus-Anderson

Top Team of the Year with a score of 64.8

- Veit & Company, Inc.

THANK YOU TO OUR SPONSORS!

– Event Sponsors –

DORAN



Premium Station Sponsors

Maverick Cutting and Breaking
Veit & Company, Inc.
Viking Fire Sprinkler Group
Wells Concrete

Station Sponsors

ACE Electrical Contractors, Inc.
Bituminous Roadways, Inc.
Marsh & McLennan Agency
Versique Search & Consulting

Happy Hour Sponsors

ACE Electrical Contractors, Inc.
Anderson Companies
Arthur Chapman Kettering
Braun Intertec Corporation
Forterra Pipe & Precast
Wallraff Electric Co.

Keg Sponsor

Rachel Contracting

Shell Sponsors

Aid Electric Corporation
Carciofini Company
Orion Search Group

MEMBER TO MEMBER



The Duluth office of **Kraus-Anderson** has completed a new adult and pediatric therapy facility for Essentia Health, located on the second floor of the former Younkers department store at Miller Hill Health Plaza in Duluth, Minn.

Designed by LHB Architects, Polinsky Medical Rehabilitation Center expands Essentia's treatments and services for patients with neurological conditions and developmental diagnoses and will offer new equipment and new spaces designed for the latest treatment approaches and therapies for children and adults.

The 45,000-square-foot clinic adds new therapy gym spaces and treatment rooms, and offers evaluations, multidisciplinary therapy and rehabilitation psychology. The center also leads support groups and advocates for patients and their families.

The rehabilitation center completes phase 2 of the project, joining Essentia Health's Center for Personal Fitness and the Therapy and Performance Center, also located at Miller Hill Health Plaza. ♦

For the third consecutive year **Kraus-Anderson** has been named one of the Top 150 Workplaces in Minnesota by the Star Tribune. KA was ranked 18th on the midsize company list and featured all of the company's

Minnesota offices, including Minneapolis, Bemidji, Duluth and Rochester.

Produced by the same team that compiles the 29-year-old Star Tribune 100 report of the best-performing public companies in Minnesota, Top Workplaces recognizes the most progressive companies in Minnesota based on employee opinions measuring engagement, organizational health and satisfaction. The analysis included responses from over 76,000 employees at Minnesota public, private and nonprofit organizations.

"These companies deserve high praise for creating the very best work environments in the state of Minnesota," said Michael J. Klingensmith, Star Tribune publisher. "My congratulations to each of these exceptional companies."

To qualify for the Star Tribune Top Workplaces, a company must have more than 50 employees in Minnesota. Nearly 3,000 companies were invited to participate. Rankings were composite scores calculated purely on the basis of employee responses. The rankings are based on survey information collected by Energage, an independent company specializing in employee engagement and retention.

"This award is really all about our employees and what they are able to accomplish by working together," said Bruce Engelsma, Kraus-Anderson chairman. "Each year they bring the same passion and ingenuity to this project that they bring to serving our clients, and we are all the better for their efforts." ♦

The newly finished 13250 Grove Drive is a 7,500 square foot single story two-tenant building located in Maple Grove, Minnesota. Its proximity to the busy street of Weaver Lake Road made it an ideal location for Caribou Coffee and Highland Bank. Both the Highland Bank and the Caribou Coffee offer a drive thru service to their customers as well as exterior patio seating.

Built by **Rochon Corporation** and designed by Mohagen Hansen, this newly constructed project consists of brick veneer, cast stone, cement board siding, metal wall panels and aluminum storefronts. ♦

Kraus-Anderson has begun construction of the remodel and addition at Frost Lake Elementary School located at 1505 Hoyt Ave. N. in St. Paul, Minn.

Designed by U+B Architecture & Design, the new \$20 million school for K-5 students will further the





St. Paul Public School District's vision of maximizing educational achievement through racial equity and personalized learning. The new spaces will allow for greater creativity and adds more room for students to receive more personalized learning.

The new two-story addition features a new entry, gym, cafeteria, inclusive restrooms, playground, kitchen, common and administration spaces, along with extensive phased remodeling of the existing learning spaces. The remodel will improve indoor air quality for students and staff, and will improve cross-functionality of the existing spaces. The attached Parks building will also be demolished during the final phase of the project.

Other improvements included replacing the HVAC and controls, updating technology, and improving site drainage, lighting, finishes, fire suppression, security and alarm systems.

Frost Lake Elementary is one of dozens of major K-12 construction projects Kraus-Anderson will work on this year during its "Summer Sprint," a critical, concentrated time during the summer months when school is not in session and when crews can perform work that ranges from new school construction to upgrades to deferred maintenance projects.

KA continues to lead the field of regional education construction projects and is currently ranked 8th

in the nation in the construction of K-12 facilities by Building Design and Construction magazine. Over the past five years, KA has completed over \$1 billion in K-12 projects. KA's comprehensive school construction services include facility analysis and budget approaches, leading to informed and successful referendum initiatives. ♦

Kraus-Anderson (KA) has completed construction on a 59,800-square-foot dealership for Ziegler Cat's agriculture and construction equipment. Located at 4600 Highway 71 South in Willmar, the two-story service facility features a retail showroom, a 25,000-square-foot shop, warehouse and offices, and a 7,800-square-foot cold storage building. Designed by CNH Architects, the facility also includes two bridge cranes, lube systems and a wash/steam bay.

One of Caterpillar's largest dealers in North America, Ziegler is expanding its equipment sales, rental and repair services in the central Minnesota market area and expects to have a significant employment and economic impact. Ziegler sells and services Cat construction, paving, forestry, mining equipment, trucks, generators, and industrial engines. Ziegler also sells the full line of AGCO equipment and CLAAS combines.

Ziegler Cat first opened in Willmar with a rented 5,360 square-foot sales and parts facility in 2015. The new



Risk Rewarded

WWW.CSDZ.COM

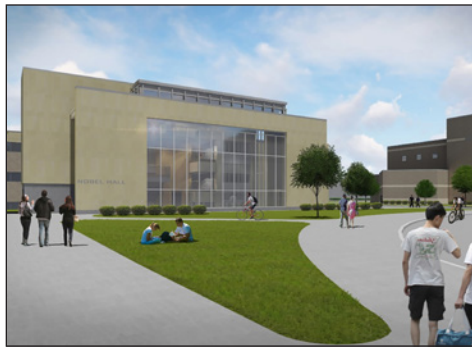
(612) 349-2400

project will replace that building, bringing a significantly larger presence to the area.

Ziegler Cat has 27 locations and was founded in 1914. Ziegler is a family-owned company employing more than 2,000 people in Minnesota, Iowa, Wisconsin and Missouri. ♦

Rochon has completed construction of Midway Bank of America, located in St. Paul, Minnesota. This is a 4,500 square foot free-standing building located on a 7,000 square foot land parcel. This project had to meet the city's design standards while simultaneously addressing Bank of America's operational requirements. This required thoughtful engineering by the design team to create the look of a 2-story building in a single-story configuration. A second parcel was needed in order to facilitate the access of parking that was needed for the employees and customers of Bank of America.

Located at the intersection of University and Fry Ave, Architectural Consortium, designed this building to fit the Urban charm of St. Paul. The design features a stone corner tower element that highlights the entry, upper windows to offer a two-story appearance, and a large storefront that helps maximize the pedestrian experience. ♦



Kraus-Anderson (KA) has completed a \$70 million expansion and renovation of Nobel Hall of Science at Gustavus Adolphus College in St. Peter, Minn. Nobel Hall houses the departments of biology, chemistry, geography and geology, along with interdisciplinary programs in biochemistry, molecular biology and environmental studies.

KA's partnership with Gustavus stretches over 40 years and includes the campus reconstruction after the 1998 tornado and recent projects such as Anderson Hall and Beck Academic Hall.

Designed by Hastings+Chivetta, the expansion nearly doubles the building's footprint. The 182,828-square-foot project includes a 90,935-square-foot renovation of Nobel Hall, a 79,561-square-foot south expansion and 12,332-square-foot north expansion. The college's innovative project is one of the

first STEAM (Science, Technology, Engineering, Art and Mathematics) buildings in the area through the connection of the Nobel Hall of Science with the Schafer Fine Arts building via an expansive lobby and laboratory theatre. Nobel Hall improvements create new synergies among faculty with agencies that are based on common research endeavors, teaching collaborations and shared instrumentation.

The new complex will include additional research and teaching laboratories designed to accommodate leading industry standards for student and faculty safety, equipment and research methods. The project also adds new offices, classrooms, meeting rooms and libraries, as well as a museum, experimental theater space, greenhouse and auditorium. Other additions include 20 collaboration and conference spaces, a laundry, and increased support areas to allow for additional equipment rooms, chemical storage and hazardous material handling.

Building systems have been designed to handle the capacity of the new expansions and to allow for future flexibility. KA installed a new 1,000-ton water-cooled chiller for the south quadrant of the campus. Other central campus utilities such as steam, steam condensate, domestic cold and hot water, and sanitary and storm sewers have been extended to the building site. The project is seeking Silver LEED certification and has already helped contribute to over \$186,000 in energy rebates for Gustavus. ♦

Kraus-Anderson (KA) has completed a 250,000-square-foot retail sporting goods store for Scheels located at the Eden Prairie Center in Eden Prairie, Minn.

Designed by R.L. Engebretson Architecture, the \$58 million store consists of two main stories of retail space with a 16,000-gallon saltwater



aquarium, 45-foot-tall Ferris Wheel, wildlife taxidermy mountain, as well as a restaurant, candy shop and offices.

The Scheels Retail Shopping Adventure, which anticipates drawing customers from 100 to 250 miles away, will showcase Minnesota's largest selection of sports, fashion and footwear. Scheels' 85 specialty shops will include items that range from technical running gear and fashion, to hunting and fishing shops. The sport shoe, hiking boot and casual footwear selection will be the largest in the region.

The new store also features a world-class golf shop, bike shop, ski shop, canoe and kayak shop, fishing shop, and gun and hunting shops. Ginna's Café and Fuzziwig's Candy

Factory will serve gourmet soups and sandwiches, coffee and specialty drinks, and 24 flavors of homemade fudge.

The new store is expected to employ approximately 400 people. ♦

Rochon recently broke ground on the Zimmerman Livonia | Fire District's new 26,000 square foot Fire Hall and Event Center. Designed by Kodet Architectural Group, the new Fire Station will consist of seven apparatus bays, a dispatch area, decontamination area, gear storage, offices, a kitchen, and a 5,500 square foot training room. Attached to the fire station there will be an event center which will consist of a commercial kitchen, seating for 300 people, a large conference room, and space for restrooms, storage space,

and an entrance/lobby. This event center will run on its own allowing for there to be no disruption of traffic if an emergency occurs and the fire trucks need to enter or leave the fire station.

This new station and event center will give the City of Zimmerman and Livonia the much-needed space to train, expand, and ensure proper service to the fast-growing community.

Expected completion date is Spring of 2021. ♦

Kraus-Anderson Construction (KA) has completed a new \$15.7 million, 36,000-square-foot elementary school addition in Shell Lake, just south of Spooner in Washburn County, Wis.

Kraus-Anderson, which worked with the School District of Shell Lake on educational facility and capital improvement planning, assisted in a community engagement campaign to successfully pass its referendum on April 3, 2018.

Designed by LHB Architects, Shell Lake School adds a new PK-2 elementary wing to the existing 3-12 facility. The project also includes improvements to the existing





elementary/middle/high school building and grounds; classroom improvements and equipment acquisition; and a secured entry at the existing 3-12 school. The new addition will have an improved cafeteria space, and music, art and special education spaces.

The project also features renovations for Science, Art, Tech-Ed and Special Education; and new 12,000-square-foot gymnasium that serves as a multi-purpose space for athletics and performing arts.

Shell Lake School is one of dozens of major K-12 construction projects Kraus-Anderson will work on this year during its "Summer Sprint," a critical, concentrated time during the summer months when school is not in session and when crews can perform work that ranges from new school construction to upgrades to deferred maintenance projects. ♦

Rochon is underway with renovations at Heritage E-STEM Magnet Middle School, which is a part of the 197-school district located in West St. Paul. This project consists of an extensive remodeling of approximately 127,400 square feet. This project will consist of infilling the existing indoor swimming pool area with concrete to create a multi-purpose area to better accommodate the needs of the school.

This project was designed by LSE Architects, Inc. The new multi-purpose area consists of a gymnasium and auditorium which includes a new wood athletic floor system, telescoping bleachers,

theatre curtains, lighting, acoustical panels, and gymnasium equipment. In addition to the multi-purpose area Rochon is renovating the music room, cafeteria, and common spaces in the academic wings.

This project is expected to be complete for the start of the 2021 school year. ♦

Kraus-Anderson has completed a \$17.5 million addition to Hutchinson Health in Hutchinson, Minn., located about 60 miles west of Minneapolis.

The construction project has expanded the hospital's footprint by more than 17,000 square feet and includes 18 new medical, surgical and intensive care patient rooms that are more spacious and include more patient amenities than the current rooms.

Wold Architects and Engineers designed the expansion. Construction, which also included a new central utility plant, began in April 2019.

Hutchinson Health is a HealthPartners facility that is located about 60 miles west of Minneapolis. It offers a wide range of care from clinic services and outpatient procedures to inpatient care. Hutchinson Health is classified as a Level 4 trauma center. It provides initial evaluation, stabilization, diagnostic capabilities, and can transfer patients to a higher level of care if needed. ♦

Doran RE Partners, a trio of executives from **Doran Companies**, today announced they have broken



Your Partner for Success.

Marsh & McLennan Agency specializes in developing your Business Insurance and Employee Health and Benefits programs to help you strategize for the future and keep you ahead of the competition.

Find out how we can help your company turn risk into opportunity.

[MarshMMA.com](https://marshmma.com)

MINNEAPOLIS | DULUTH
LOCATIONS THROUGHOUT
THE UPPER MIDWEST AND THE U.S.

+1 800 444 3033
[MARSHMMA.COM](https://marshmma.com)

ground on an 86-unit luxury apartment community in Tonka Bay. This newest venture by the Partners, when finished, will be the first multi-family community in Tonka Bay – a community known for its quiet, historic charm located on the southern shores of Lake Minnetonka.

"We are thrilled to break ground in this incredible community of Tonka Bay," said Doran Companies CEO and Doran RE Partner Anne Behrendt.

"We understand the community here and are excited to contribute to its vitality while preserving its historic charm."



The 86-unit community will be comprised of two adjacent buildings and will include two-story townhomes and one-, two- and three-bedroom apartments. Generous amenities will ensure every convenience is considered.

"We designed the building, as we always do, with our future residents in mind," said Tony Kuechle, president of development for Doran Companies. "We wanted to create spacious apartments and townhomes that account for how people live today. Fitness, entertainment, socializing even at a distance, pets, outdoors, working from home – all of these values we know exist in Tonka Bay and neighboring communities and they are accounted for in the community's design."

Located within walking distance of Lake Minnetonka, the amenity-rich residential community will include an indoor bike repair area, heated garage, a pub, business center, coffee bar, lounge, pet spa and dog run, full fitness center, entertainment suite, outdoor lounge areas with fire pits and grill stations and on-site management and leasing services.

"Our residents will enjoy easy access to the lake as well as to miles of pedestrian and bike pathways," said Behrendt, discussing the early interest already received in the project. "We simply can't build it quickly enough."

Of note, a second RE Partners luxury multifamily community in Minnetonka, called Birke, opens the doors to its first residents later this year. ♦

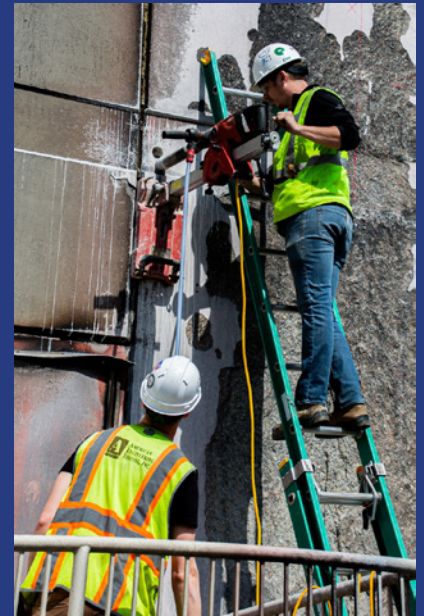
Kraus-Anderson Construction Company (KA) will soon complete renovation projects on several Wayzata Public Schools, including Wayzata West Middle School, East Middle School, Kimberly Lane Elementary, Greenwood Elementary and Sunset Hill Elementary. The improvements will provide a more open and flexible learning environment geared toward 21st century. The renovations were designed by Wold Architects and Engineers.

Wayzata West Middle School - 149 Barry Ave North, Wayzata. Minn.

To be completed in late August 2020, the \$8.1 million project features a remodel of the existing media center, upgrades to the pool mechanical system and reconfiguration of the athletic fields. The project also includes renovation of the existing gym and stage area, which will be completed in late December 2020.

Kimberly Lane Elementary - 17405 Old Rockford Rd., Plymouth, Minn.

The \$2.8 million project includes upgrades to the media center and will replace the old boilers with more efficient ones. The 8,500-square-foot project is expected to be completed in early August 2020.



Geotechnical Engineering
Environmental Consulting
Building Technology
Envelope Design & Testing
Nondestructive Testing
Forensic Engineering
Construction Materials Testing
Petrography / Chemistry



www.amengtest.com
(800) 972-6364

Greenwood Elementary - 18005 Medina Rd., Plymouth, Minn.

The \$1.57 million project includes renovation of the 7,500-square-foot media center and is expected to be completed in late August 2020.

Sunset Hill Elementary - 13005 Sunset Trail, Plymouth, Minn.

The \$1.65 million renovation, expected to be completed in early August 2020, includes upgrades to the 5,700-square-foot media center. The school is also receiving \$1.8 million of site improvements to strengthen site safety for parents, staff and bus traffic during drop off and pick.

In addition, the Sunset Hill project is paired with a \$700,000 fire lane upgrade at East Middle School. ♦

Rochon is proud to partner with Holy Family Academy to build their new 21,000 square foot school addition. Designed by 292 Design Group, the addition will include new academy classrooms, additional parish meeting rooms and a multi-purpose space consisting of a gymnasium, auditorium, theatre and event space.

Holy Family Academy is in the growing community of St. Louis Park, MN. The new addition will allow the school to serve PreK through 8th grade. Expected to be complete by end of year 2020. ♦

Kraus-Anderson (KA) has completed construction of North Park

Elementary, part of Columbia Heights Public Schools, located at 5575 Fillmore St. NE in Fridley, Minn.

Designed by Cuningham Group Architecture, the \$11.4 million project included a 12,500-square-foot addition featuring new classrooms and new administrative spaces for a single point of enhanced entry for all visitors. The 30,000-square-foot renovation of the cafeteria and classrooms improves hands-on learning spaces for science and arts. A new playground, parking and bus drop-off were also added.

North Park Elementary is among dozens of many K-12 construction projects Kraus-Anderson will work on this year during its "Summer Sprint," a critical, concentrated time during the summer months when school is not in session and when crews can perform work that ranges from new school construction to upgrades to deferred maintenance projects.

KA continues to lead the field of regional education construction projects and is currently ranked 8th in the nation in the construction of K-12 facilities by Building Design and Construction magazine. Over the past five years, KA has completed over \$1 billion in K-12 projects. KA's comprehensive school construction services include facility analysis and budget approaches, leading to informed and successful referendum initiatives. ♦







BR
*Bituminous
Roadways, Inc.*

**Providing Superior Asphalt
Pavement Solutions**

Parking Lots | Roadways | Trails | Athletic Surfaces
bitroads.com | 651-686-7001



Kraus-Anderson has completed a new \$22 million Windom Elementary School located at 1200 17th Street in Windom, Minn.

In May 2018 voters approved a \$23.9 million district bond referendum project to prepare students to succeed now and in the future.

Designed by ISG Architects, the project relocated the 4th and 5th grades from the middle school to a new 77,090-square-foot, stand-alone K-5 elementary school, creating one campus to the existing middle school and high school. The elementary school alleviates overcrowding, and adds classrooms, flexible learning areas, and safety and security. A music room, art room, media center, student commons and physical education areas were added along with new administration and kitchen areas.

In addition, a \$2 million remodel of the middle/high school included a 7,000-square-foot precast addition that connects to the existing Ag and Metal shop along the north side of the building. The project

also remodeled the existing shop classrooms.

Windom Elementary School is among of dozens of major K-12 construction projects Kraus-Anderson will work on this year during its “Summer Sprint,” a critical, concentrated time during the summer months when school is not in session and when crews can perform work that ranges from new school construction to upgrades to deferred maintenance projects.

KA continues to lead the field of regional education construction projects and is currently ranked 8th in the nation in the construction of K-12 facilities by Building Design and Construction magazine. Over the past five years, KA has completed over \$1 billion in K-12 projects. KA’s comprehensive school construction services include facility analysis and budget approaches, leading to informed and successful referendum initiatives. ♦

Kraus-Anderson (KA) has begun construction on a \$15 million expansion at Madison Healthcare Services, an independent healthcare



KRAUS-ANDERSON®



**BUILDING ENDURING
RELATIONSHIPS AND
STRONG COMMUNITIES**

www.krausanderson.com

facility in Madison, Minn., approximately 25 miles west of Montevideo in western Minnesota.

Madison Healthcare Services is a total healthcare provider featuring a skilled nursing facility, critical access hospital, outreach specialty services, home care services, fully staffed medical clinic, independent living apartment building and therapy services.

Originally constructed in 1952, the 52,639-square-foot renovation includes a 37-unit skilled nursing addition, 12-unit assisted living addition and 12-car underground parking.

Designed by HGA Architects, the project is expected to be completed by summer of 2022. ♦

Kraus-Anderson Construction Company (KA) has completed an extensive renovation of States South Central Community College in Mankato, Minn. The college is a member of the Minnesota State College and University System. The \$8.3 million project enhances the Agriculture, STEM, Manufacturing and Allied Health programs.



The project, which transforms the existing 1960's interior space into a modern, sustainable and collaborative environment, creates student and faculty environments that simulate real-life technical experiences with modern university labs and classrooms. As a result, the improvements will help prepare students to enter the workforce or transfer to a university with the skills they need to be successful.

Designed by DLR Group, the 58,100-square-foot project features improvements to Nursing, Paramedic, Welding and Ag laboratory spaces, and an 11,350-square-foot renovation of circulation and support spaces. The project also adds new modernized classrooms, code-compliant restrooms, vibrant social and study spaces, centralized offices and flexible multi-purpose labs. ♦

WOULD YOU LIKE TO SEE YOUR NAME OR YOUR COMPANY'S NAME IN THE NEXT CONSTRUCTION VIEWS?

If so, please upload all company press releases, announcements and updates to the MCA website at mnconstruction.org/news/newsletter.

DORAN

| DEVELOPMENT

| ARCHITECTURE

| CONSTRUCTION

| MANAGEMENT

ENHANCING LIVES AND BUILDING COMMUNITIES

DoranCompanies.com | 7803 Glenroy Rd, Bloomington, MN 55439

MCA

4248 Park Glen Road
Minneapolis, MN 55416
(952) 928-4646 • fax (952) 929-1318
www.mnconstruction.org
info@mnconstruction.org

Jenny Wothe
Executive Director

WE CAN'T THANK YOU ENOUGH

**We thank the following
sponsors for their support:**

PLATINUM SPONSOR (\$1,000 LEVEL)



MCA

MINNESOTA
CONSTRUCTION
ASSOCIATION

MCA is a non-profit association dedicated to educating and promoting the construction industry. Statements of fact and opinion in this publication are the responsibility of the authors alone and do not necessarily reflect or imply the opinion of the members, directors or staff of MCA.