



MINNESOTA
CONSTRUCTION
ASSOCIATION

CONSTRUCTION VIEWS

— JULY 2020 —

CONTENTS

- 2020 MCA Scholarship Golf Tournament | 1
- President's Column | 2
- Board of Directors | 2
- New Members | 3
- Calendar of Events | 4
- Submit Your Company Blogs and Articles | 4
- 2020-2021 Scholarship Recipients | 5
- Ask Ms. Awards | 6
- 2020 MCA Sporting Clays Event | 6
- Virtual Education Session: When Tragedy Strikes | 7
- COVID-19 Resources | 7
- Member to Member | 8

Mission: *The Minnesota Construction Association fosters education, recognition and networking for all industry professionals who collaborate, plan, create and sustain best construction practices.*

Vision: *The collaborative place for the building industry.*

Register Today for the 2020 MCA Scholarship GOLF TOURNAMENT

Wednesday, August 19, 2020 | 11:00 AM - 6:00 PM | Deer Run Golf Club | 8661 Deer Run Drive, Victoria, MN 55386



— CLICK HERE —

FOR ADDITIONAL INFORMATION AND TO REGISTER TODAY!

Back by popular demand the MCA Scholarship Golf Tournament returns to Deer Run Golf Club on Wednesday, August 19, 2020.

► REGISTRATION AND CANCELLATION DEADLINE IS AUGUST 3, 2020

Don't miss the opportunity to join fellow construction industry professionals for a great day of golf at the course that was voted "Best Public Golf Course in Minnesota" by WCCO viewers!

FEES: Cost Per Person (\$175*)

Dinner Only: \$25 | Lunch Only: \$15

*Golfer fee includes: driving range, putting green, round of golf, golf cart, box lunch, happy hour, steak dinner and awards ceremony

► SPONSORSHIP OPPORTUNITIES ARE AVAILABLE!

As a non-profit organization, we are asking for support from MCA members and local businesses to offset the costs of this tournament. We invite you to be a part of this event, which will provide you with an excellent opportunity to promote your organization's services to the construction industry.

- Event Sponsor (2 sold, 4 available) – \$1,400
- Premium Hole Sponsor (limited number available) – \$1,000
- Hole Sponsor (limited number available) – \$500
- Registration Table Sponsor (only 1 available) – \$500
- Dinner Sponsor (3 available) – \$260
- Driving Range Sponsor (3 available) – \$260
- GPS Golf Cart Sponsor – \$260
- Happy Hour Sponsor (1 sold, 2 available) – \$260
- Putting Green Sponsor (**SOLD OUT!**)
- Lunch Sponsor (**SOLD OUT!**)



Education. Recognition. Networking.



PRESIDENT'S COLUMN

Heather Grazzini-Sims
Carciofini Company

“Smile, you’re on camera!”

As a hobby, I am a marathon runner. So far I have completed 27 marathons in 25 states with a goal of completing a marathon in all 50 states before I turn fifty years old. Running a marathon is 99 percent mental and the other 1 percent . . . is mental too. Ten years ago a coach told me to remember to smile when I was racing: “Not only will you look better in the candid snapshots by photographers but smiling produces endorphins which will give you energy for another mile!”

Every day we are faced with a new moment, a decision, and a test of leadership. Now more than ever we have to remember to smile every day. The increased calls and online Zoom meetings seem unending but smiling will help you through it; smiling significantly improves your mood and mental strength. The impact of global, civil, and local unrest and uncertainty is real. Smile and use those endorphins to keep moving forward. Control what you can and take it one day at a time.

That being said, I hope you all had the opportunity to review the thorough [report](#) by Ron Wirtz, Director, Regional Outreach of the [Federal Reserve Bank of Minneapolis](#). This report was developed and based on a survey sent out to twenty in-state industry associations regarding the impact of COVID-19. The report analyzes how although there have been project interruptions, our industry is still holding strong.

Looking ahead, please see the events the MCA has coming up:

- Virtual Education Session: When Tragedy Strikes
- 2020 MCA Scholarship Golf Tournament at Deer Run Golf Course
- Education Session: Creating a Successful Partnership, A Subcontractors Point of View
- Education Session: Construction Industry Forecast - The State of the Minnesota Economy
- 7th Annual Sporting Clays Shoot at Horse and Hunt Club
- Postponed - St. Paul Saints Game, TBD in May 2021
- Postponed - Volunteer Meet & Greet, TBD

Check out the [MCA website](#) for more information on all our events.

We still need volunteers! Volunteering is an excellent way to get involved, meet new people and give back to the industry. The [MCA Construct*ium Committee](#) focuses on student outreach and connecting students who are pursuing degrees in construction with local companies, mentors, student competitions, and scholarship opportunities. We are in need of motivated members to keep this program strong.

Whether you are a young or seasoned professional, be a part of the FUTURE of the MCA. You will find it a great place to collaborate with like-minded individuals and grow your network. I look forward to seeing you all throughout the year. Please reach out to me with any questions or comments regarding the MCA at heather.grazzini@carciofini.com or (612) 328-4212.

I wish you all health and prosperity.

MCA 2020 BOARD OF DIRECTORS

PRESIDENT

Heather Grazzini-Sims
Carciofini Company

VICE PRESIDENT

Dave Lyste, P.E.
Rachel Contracting

TREASURER

Grant Tentis, CPA, MBT, CVA
Smith Schafer & Associates

SECRETARY

Allie Zeman
Adolfson & Peterson
Construction

PAST PRESIDENT

Paul Almen
Ryan Companies US, Inc.

DIRECTORS

David Borak
Orion Search Group

Corey Bronczyk
Arthur Chapman Kettering
Smetak & Pikala, P.A.

Brett Grendahl
Grendahl Mechanical

Gregg Johnson
Landmark Development
Services Company, LLC

Ryan Klick
Kraus-Anderson

Patrick Lawrence
Empirehouse, Inc.

Patrick North
SitesForBuilders.com

John Peterson
Doran Construction

STAFF

Jenny Wothe
Executive Director

Jenny Howard
Website & Marketing Manager



MCA

**MINNESOTA
CONSTRUCTION
ASSOCIATION**

Education. Recognition. Networking.

PLEASE HELP MCA WELCOME OUR NEWEST STUDENT MEMBERS:

NORTH DAKOTA STATE UNIVERSITY

- Brady Johnson

UNIVERSITY OF NORTHERN IOWA

- Sam Stecklein
- Joshua Vance
- Andrew Welty

ST. CLOUD STATE UNIVERSITY

- Michael O'Reilly

IOWA STATE UNIVERSITY

- Justin Babcock
- Sadie Pankratz
- Ty Turner

MINNESOTA STATE UNIVERSITY, MANKATO

- Vandy Manyeh

SOUTH DAKOTA STATE UNIVERSITY

- Hunter Jorgensen

UNIVERSITY OF MINNESOTA

- Brandi Rutten
- Nick Salzle

CALENDAR OF EVENTS

WEDNESDAY, JULY 29

Virtual Education: When Tragedy Strikes

WEDNESDAY, AUGUST 19

Scholarship Golf Tournament

WEDNESDAY, SEPTEMBER 16

Education: Creating a Successful Partnership – A Subcontractor’s Point of View

WEDNESDAY, OCTOBER 21

3rd Annual Sporting Clays Shoot

OCTOBER

Education: Construction Industry Forecast – The State of the Minnesota Economy

NOVEMBER

7th Annual Soirée



Find more information
on MCA events at
[mnconstruction.org/events/
calendar-of-events/](https://mnconstruction.org/events/calendar-of-events/)

SUBMIT YOUR COMPANY BLOGS & ARTICLES



Be featured on the MCA website and social media by submitting your company blogs and articles!

One of the ways we want to keep the new MCA website fresh is to offer our members the chance to showcase news, relevant stories, or interesting articles on our blog page. This will provide valuable exposure for your company and give you the opportunity to engage new customers.

We’re excited to provide fun and interesting content for our members written by our members!

[CLICK HERE](#)

TO SUBMIT YOUR COMPANY BLOGS & ARTICLES FOR SUMMER/FALL 2020

– SPRING 2020 BLOGS –



Construct*ium: My Senior Year Mentorship Program Experience >>



Teaching the Soft Skills Every Construction Manager Needs >>



COVID-19 Business Resource Center >>



Construct*ium Mentorship Program: A Student’s Experience >>



Atomic Recycling’s Commitment to a Green Environment >>

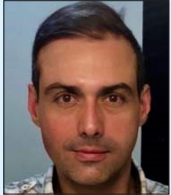


Covid-19/Coronavirus Briefing Paper >>

Congratulations to our 2020-2021 Scholarship Recipients

This year MCA had the honor of awarding scholarships, totaling \$10,000, to four exemplary students. This is one of the many pursuits MCA utilizes to integrate students into the construction industry. We are grateful to have these young professionals involved in our organization and will continue to support them with their future endeavors in our industry!

Adam Wardak | \$4,000 Scholarship Recipient



This fall Adam will be a senior at the University of Minnesota working towards a double major in Construction Management and Business. Adam was elected by the faculty leadership of the UMN Construction Management program to serve as president of their Sigma Lambda Chi International Construction Honor Society chapter. Last year he completed a summer internship at McGough Construction and this summer is serving as a hybrid field and office engineer intern with Hensel Phelps. Following graduation, Adam aspires to join a construction firm with the goal of starting his own business dedicated to affordable housing.

Olivia Januszewski | \$3,000 Scholarship Recipient



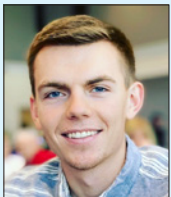
Olivia will start the Fall Semester at Minnesota State University, Moorhead as a senior. She is working towards a Construction Management degree and a Business Administration minor. Prior to starting at MSUM, she attended MState in Detroit Lakes as a PSEO student and graduated with an Architectural Drafting and Design Degree. Olivia is currently working as an estimating intern at Wanzek Construction in the Wind Energy department. After graduation she plans to work for a residential or commercial construction company.

Mike O'Reilly | \$2,000 Scholarship Recipient



Mike is a senior at St. Cloud State University in the Construction Management program. He was a member and past president of the SAE Clean Snowmobile Club. He worked as a project supervisor for a small environmental company in Georgia that specializes in construction, mold remediation, and lead & asbestos abatement before returning to St. Cloud. Following graduation Mike would like to work with one of the general contractors within the Twin Cities area with a focus on high-performance building design.

Landon Leberman | \$1,000 Scholarship Recipient



Landon is a senior at South Dakota State University with a major in Construction Management and a minor in Military Science. Landon is a member of the Army ROTC program and a member of the South Dakota Army National Guard. He plans to commission as an engineering officer upon graduation and would like to pursue a position as a project engineer at a mid-sized contracting company. Landon completed a project engineer internship at Brinkmann Constructors in Denver and is currently at Reynolds Construction Management in Sioux Falls as Field Superintendent.

THANK YOU TO OUR 2020 GOLF SPONSORS!

EVENT SPONSORS

- Larkin Hoffman
- Veit & Company, Inc.

PREMIUM HOLE SPONSORS

- Atomic Recycling
- Braun Intertec
- CSDZ
- Doran Construction
- Greiner Construction
- INSPEC, Inc.
- Kellington Construction, Inc.
- Maverick Cutting and Breaking
- Meyer Contracting
- Rachel Contracting
- Sonus Interiors
- Terra Construction
- Versacon, Inc.
- Wells Concrete

HOLE SPONSORS

- Bituminous Roadways, Inc.
- Flynn Companies
- Laketown Electric Corporation

HAPPY HOUR SPONSOR

- Hays Companies Construction Risk Division

PUTTING GREEN SPONSOR

- Clean Response

LUNCH SPONSORS

- American Engineering Testing, Inc.
- Carciofini Company
- Orion Search Group

ASK Ms. Awards

Dear Ms. Awards,

I have attended the MCA Awards of Excellence Gala the past couple of years and have noticed there doesn't seem to be many projects nominated for the Research, Innovation or Use of Technology category. Can you provide me with some information about this category so I can keep my eye out for future projects that fit this category?

Sincerely,
Mr. Nomination

Dear Mr. Nomination,

The Research, Innovation or Use of Technology category is one of our more unique categories spotlighted at the Awards Gala. This category looks to recognize construction "means and methods", processes, or studies that advance or improve the construction industry. The Awards Gala has seen everything from:

- Using laser scanning to create intricate wood column tops
- Imaginative concrete cutting techniques
- Outside of the box support system design for a sidewalk mosaic

This only touches the surface of innovation, progress, and forward thinking that our industry has to offer. So, at your next jobsite walkthrough, development meeting, or brainstorming session, us here at the Awards Gala encourage you to keep your eyes and ears open for the next recipient of the Research, Innovation or Use of Technology Award.

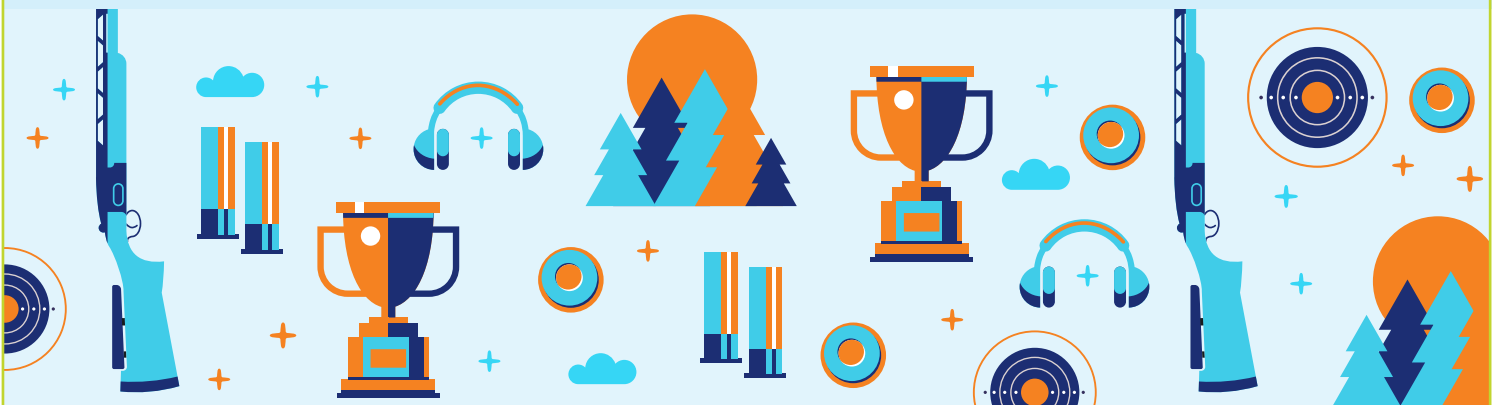
Sincerely,
Ms. Awards

SAVE THE DATE!

2020 MCA Sporting Clays Event: Wednesday, October 21

Join fellow Minnesota Construction Association members in the Annual Sporting Clays Event on Wednesday, October 21, 2020 at the Minnesota Horse & Hunt Club.

Watch for more information on registration soon!





Virtual Education Session WHEN TRAGEDY STRIKES

You're invited to MCA's virtual education session featuring a panel of safety, legal, and communication professionals & experts. Discover measures you should implement in the event of work site incidents and how it will affect your company or business.

Thank you for supporting MCA during this pandemic. This virtual event will provide you with essential education for you and your company.

WEDNESDAY, JULY 29, 2020:

7:30 – 8:00 am Virtual Networking

8:00 – 9:30 am Program

COST:

\$10 Members

\$20 Non-Members



VIRTUAL EVENT VIA ZOOM HOSTED BY:
Marsh & McLennan Agency

► **Register Today!**



COVID-19 RESOURCES

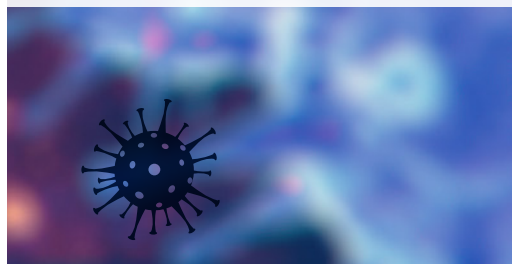
The past few months have not been “business as usual”; the **COVID-19 pandemic** has forced us to reconstruct the way we conduct business and think out of the box in order to remain successful. To support our members, we created a **COVID-19 Resources** page on the MCA website. If you are in need of support, please check out those resources or email info@mnconstruction.org.



COVID-19 Resources Page



info@mnconstruction.org



MEMBER TO MEMBER



The Rochester office of **Kraus-Anderson (KA)** has begun to build a \$28 million addition to Pipestone Elementary School for Pipestone Area Schools. The new school will be located at 1401 7th Street SW in Pipestone, Minn.

Designed by ISG Architects, the two-story, 85,940-square-foot elementary school project also will feature interior renovations at the middle school and high school. Those improvements include safety and security upgrades throughout the buildings and to the parking lot around the site.

The project is expected to be completed in late summer of 2021.

KA continues to lead the field of regional education construction projects and is currently ranked 8th in the nation in the construction of K-12 facilities by Building Design and Construction magazine. Over the past five years, KA has completed over \$1 billion in K-12 projects. KA's comprehensive school construction services include facility analysis and budget approaches, leading to informed and successful referendum initiatives. ♦

Fabyanske, Westra, Hart & Thomson, P.A. has been ranked as a Band 1 Construction Law Firm in

Minnesota by the well-recognized Chambers professional rating service. Here's what Chambers has to say about FWHT:

The team is known as "Esteemed for its dedicated construction group, which brings deep industry insight to disputes, contract negotiations and planning issues. Represents diverse participants from the public and private sectors, including design professionals, insurers and subcontractors. Frequently acts on large-scale regional and national projects. Numerous attorneys within the team are well known in the sector, having been appointed to leadership roles at a variety of industry bodies."

Ranked Lawyers:

- Dean Thomson (Band 1 Construction Law)
- Kyle Hart (Band 1 Construction Law)
- Jesse Orman (Band 3 Construction Law)
- Mark Becker (Band 3 Construction Law)
- Rory Duggan (Band 4 Real Estate Law)

Described as "the best in Minnesota," Dean Thomson wins praise from all corners of the market for his impressive construction practice.

"I trust his judgment implicitly and his talents are second to none in the industry," comments one interviewee. Another reports: "He has an in-depth knowledge of construction litigation and insurance and knows how to communicate well with clients."

Kyle Hart has extensive experience representing general contractors in litigation. One impressed client remarks: "I value his advice and work and consider him to be one of the premier construction attorneys in the entire Midwest." A market source adds: "He has so much experience and knowledge, I don't know how he stays on top of so much but it is amazing. He knows his way around cases so well."

Jesse Orman has a wide-ranging construction practice which covers the drafting and negotiation of contracts, as well as representing clients in litigation. He counts materials suppliers and design professionals among his clients.

Mark Becker is described by one peer as "a fountain of construction knowledge and information." He has extensive experience representing owners, contractors and design professionals in both contentious and noncontentious matters.

Rory Duggan has a wide-reaching national practice. He represents financial institutions in real estate and construction financing. "I love working with him," says one interviewee, who adds: "He always finds a way to get a deal done." ♦

Kraus-Anderson (KA) has been awarded a Governor's Safety Meritorious Award in recognition of excellence in injury prevention

performance. KA has one of the best safety records in the construction industry, a performance that for 27 years has earned the company the Governor's Safety Award.

"KA's commitment to our people's safety is reflected in the company's outstanding record of receiving this award," said Al Gerhardt, president and COO of Kraus-Anderson. "No other recognition gives us more gratification."

Since 1934, the annual Governor's Safety Awards have honored Minnesota employers with exceptional safety performance. Applicants are judged on several years of injury data as it compares with state and national statistics, and on their progress in implementing a comprehensive safety program. ♦



Marsh & McLennan Agency, a national insurance agency, sought an accessible, premier site that offered amenities and nature for the relocation of their 300 employees in their Midwest headquarters.

The newly finished Golden Hills Drive, 45,000 sq. ft. single story office is located north of 394 and west of Highway 100. It's proximity to the West End shopping and dining area made it an ideal location to house Marsh & McLennan Agency's employees.

Built by Rochon Corporation and designed by Mohagen Hansen Architecture | Interiors the renovation of this pre-existing dark, tired office/warehouse suite was transformed into a bright, vibrant

workplace environment. This space offers new ways of working and employee perks throughout. The team incorporated multiple amenities for both employee wellness and collaboration, including a mother's room, a large café, collaborative niches and booths, a treadmill walking workspace, a large training room, a gym and sit-to-stand desks at each workstation.

This project was completed March of 2020. ♦



Kraus-Anderson Construction Company (KA), one of the Midwest's oldest and largest commercial general contractors and construction managers, has been selected to build a new music and performing arts auditorium for the St. Croix Falls School District in St. Croix Falls, Wis. The new facility's primary goal is to provide space for educational purposes and will co-exist with the proposed Civic Auditorium in the City of St. Croix Falls.

On April 7, voters approved a \$14 million district bond referendum project, which also features an improved \$1.8 million fitness area that will provide space for class participation to occur in one location as well as increased resources and availability to athletic and fitness programs for extracurricular training. The project also includes a \$525,000 bus garage addition to house and protect buses, district vehicles and maintenance equipment. The project is expected to begin in the spring of 2021 and will be completed in the fall of 2022.

Designed by DSGW, the new auditorium will accommodate continued growth of the music program and performing arts, including theatrical productions, musicals and concerts, and will also serve as a large group learning space, which frees up existing space to allow for additional educational programming. The 580-seat auditorium is modeled after the auditorium built in 2017 for Unity School District in Balsam Lake, Wis.

KA continues to lead the field of regional education construction projects and is currently ranked 8th in the nation in the construction of K-12 facilities by Building Design and Construction magazine. Over the past five years, KA has completed over \$1 billion in K-12 projects. KA's comprehensive school construction services include facility analysis and budget approaches, leading to informed and successful referendum initiatives. ♦

Doran Companies announced it is hiring across all categories of its business, echoing founder Kelly Doran's continued optimism about the Twin Cities' regional economy and its ability to weather the current health crisis.

"I see a tremendous reason for optimism," said Doran. "The Twin Cities has a remarkable economic foundation, including globally significant companies helping to lead us out of the current health crisis and the strongest, hardest-working labor force in the country. Our years of investment in higher education, health care and housing mean there is no better time to bet on ourselves."

Doran Companies is one of the leading developers in the Twin Cities, having grown through the Great Recession and later having emerged as one of the top 100 privately held companies in the Twin Cities. A key focus for the company is in the luxury apartment category, where Doran says leasing and rent

collection “remain robust” across the company’s residential portfolio with “little to no signs of distress.”

In addition to existing construction projects, Doran Companies is moving forward at an aggressive pace, designing, developing and building across the Twin Cities, including starting construction of a new two-phased 500-unit residential community in St. Anthony, a third 154-phase of its Reserve at Arbor Lakes multifamily community in Maple Grove, a new 101-unit project in St. Louis Park for a third party developer and planning for second phases of Doran’s developments at both the soon-to-open Expo luxury apartment community along the Mississippi River in Minneapolis and The Triple Crown gated apartment community in Shakopee, next to Canterbury Park.

“We are pushing aggressively forward and hiring for approximately two-dozen positions across our business lines just to keep pace with current demand,” said Doran.

Doran Companies is hiring for a variety of full and part-time positions for people of all educational and work backgrounds – including leasing, property manager, housekeeping, landscaping, maintenance, concierge, paralegal, construction project management and architectural design positions.

“Doran Companies is recognized as a great place to work,” said Doran Companies President and CEO Anne Behrendt. “We are the recipients of numerous industry awards as a top workplace and as a company that inspires talented employees to engage in meaningful work. To be able to hire as we design, build and manage residential communities, among other projects, is a great privilege and, also, a sign of real strength in the underpinnings of our economy.”

Employees receive competitive salaries and benefits that include



health care, company-sponsored retirement contributions, paid sick time and vacation days. People interested in learning more about employment with Doran Companies can visit DoranCompanies.com/careers for more information and to apply. ♦

Kraus-Anderson (KA) has begun a \$3.6 million renovation for Mounds View Public Schools at Chippewa Middle School located at 5000 Hodgson Rd. in North Oaks, Minn.

Designed by Wold Architects and Engineers, the project features a 12,000-square-foot renovation and 2,000-square-foot addition with a new main office and breakout spaces.

Construction also includes replacing the metal panel on the building to give a new fresh look. The administrative addition and renovation will allow for a secure entrance at the main entry. The new commons space also will give

students a place to gather, study and wait for transportation.

The project is expected to be completed in early fall of 2020.

Chippewa Middle School is one of dozens of major K-12 construction projects Kraus-Anderson will work on this year during its “Summer Slam,” a critical, concentrated time during the summer months when school is not in session and when crews can perform work that ranges from new school construction to upgrades to deferred maintenance projects.

KA continues to lead the field of regional education construction projects and is currently ranked 8th in the nation in the construction of K-12 facilities by Building Design and Construction magazine. Over the past five years, KA has completed over \$1 billion in K-12 projects. KA’s comprehensive school construction services include facility analysis and budget approaches, leading to informed and successful referendum initiatives. ♦

Loeffler Construction & Consulting announces its 10th anniversary as Minnesota's only firm to offer construction, consulting, owners' representation, and design-build services under one roof. Loeffler's focus is on being a Best Value or Negotiated contractor in commercial construction.

Early on, Loeffler adopted the "Integrity Built" motto which has become the foundation for each of its services and is reflected in each member of its dedicated team. "Our clients put their trust in us — something we never take for granted," says co-owner Doug Loeffler.

Loeffler's mission is to understand their client's goals, both short- and long-term allowing them to navigate the often-complicated path from concept to completion. "It's the reason we enjoy a long-standing history of developing creative solutions for the most challenging of projects," says Loeffler. Now in their 11th year of business, the experienced Loeffler Team continues to be masters of process and problem solving, to ensure the success of their clients' needs.

The firm started in the home basement of Doug and Tammy Loeffler during the 2010 recession. After establishing the company in April that year, they quickly added two former colleagues to the firm Colin Bigalke and Ben Nordquist.

In January of 2011, against incredible odds, Loeffler secured a large data center project and secured renovation work at the University of Minnesota that provided a healthy backlog and the start of growth and profitability that continues to this day.

Since its founding, Loeffler is proud to have won the following prestigious awards:

- 2013, the Stellar Award for the Small Business Supplier of the Year from University

of Minnesota for its efforts in diversity and inclusion

- 2015, the T.O.P.S. Award from the Minnesota Subcontractors Association
- 2016, the Small Project of the Year Award from the Construction Partnering Program for its Anishinabe Bii Gii Wiin project in Minneapolis
- 2017, the MCA Project of the Year, "New Project Under \$15 Million" for its work on the Tashjian Bee Discovery and Pollinator Center at the University's Landscape Arboretum
- 2018, the General Contractor of the Year Award from the University of Minnesota's Office for Business & Community Economic Development
- 2019, Ben Nordquist was named Construction Professional of the Year by the Minnesota Subcontractors Association

Today the company works on ever increasingly challenging projects throughout the Midwest and beyond.

Loeffler plans to celebrate with those who have helped make their success possible and will announce details at a future date pending social distancing guidelines.

For more information about Loeffler Construction & Consulting and their

services, please visit <https://www.LoefflerConstruction.com>. ♦

Kraus-Anderson (KA) has completed the final stage of a medical office building on Gundersen Health System's Winona, Minn. campus.

Designed by HSR Associates, Inc., the 86,000-square-foot renovation converted a former Kmart located at 1122 US Highway 61, which had been vacant since 2014.

The new primary care clinic's services now open include infusion services, urgent care and a lab. Open May 18, 2020, the clinic's services will include family and internal medicine, pediatrics, women's health and imaging services. Physical and occupational therapy and an eye clinic will be moved to the new campus.

As part of the renovation, Kraus-Anderson incorporated advanced 3D laser scanning to capture existing structural conditions and to provide a means to coordinate mechanical and electrical installation. ♦

Rochon Corporation was proud to be apart of building one of the new Caribou Cabin concepts throughout Minnesota. This Caribou Cabin is located in Burnsville, Minnesota on County Road 42.

Designed by Reprise Design, this 600 square foot building captures the





“Northwoods” feel that Minnesota Cabins are known for. The Caribou Cabin offers a drive thru service, a walk-up service window and exterior patio seating but does not have any interior seating.

This project was completed December 2019. ♦



Kraus-Anderson (KA) has hired Christopher Weber as a superintendent in the company’s Minneapolis office. Prior to joining KA, Weber

was a superintendent for Sajo, Inc. of Montreal, Canada, and general manager and site superintendent for Ram Craft of Fort Worth, Texas, managing multimillion-dollar construction projects, including numerous Apple retail stores throughout the southern and eastern U.S. ♦



Rochon is pleased to welcome Scott Smethers as a Project Manager. As a Project Manager, he will oversee every phase from pre-

construction through completion. Scott brings a diverse background in project management experience

that will bring value to each project he is involved with. His commitment to the industry aligns perfectly with Rochon’s value of delivering “Commitment, Flexibility, Reliability, and Capability” to each project we work on.



Additionally, Rochon is pleased to welcome Stacy Gleason as a Senior Project Manager. As a Senior Project manager, she

will oversee every phase from pre-construction through completion. Stacy’s 20 plus years of project management experience will bring value and immeasurable expertise to each project she is involved with. Her commitment to the industry aligns perfectly with Rochon’s value of delivering “Commitment, Flexibility, Reliability, and Capability” to each project we work on. ♦

Kraus-Anderson (KA) has begun construction for Roseville Area School on the new \$38 million Fairview Education Center located at 1910 County Road B West in Roseville, Minn.

Designed by Lawal Scott Erickson Architects, the 108,000-square-foot education center features a new pool and basketball court, multiple classrooms, kitchen with two dining rooms, locker rooms and offices. A playground will be located on the west side of the building with a bus drop-off at the front of the building.

The current education center has two buildings that will be demolished after the new two-story structural steel building is built. The project has an architectural precast exterior façade with metal panels and a steel structure with composite structural concrete floors.

When the existing buildings are demolished a new parking lot will be put in its place.

The project is expected to be completed in late summer of 2021.

Fairview Education Center is one of dozens of major K-12 construction projects Kraus-Anderson will work on this year during its “Summer Slam,” a critical, concentrated time during the summer months when school is not in session and when crews can perform work that ranges from new school construction to upgrades to deferred maintenance projects.

KA continues to lead the field of regional education construction



projects and is currently ranked 8th in the nation in the construction of K-12 facilities by Building Design and Construction magazine. Over the past five years, KA has completed over \$1 billion in K-12 projects. KA's comprehensive school construction services include facility analysis and budget approaches, leading to informed and successful referendum initiatives. ♦

Doran Companies today announced that longtime real estate leader Traci Tomas is being promoted to Chief Operating Officer for Doran Companies. Working closely with president and CEO Anne Behrendt, Tomas will chart a strategic path forward for Doran Companies' recent certification as a woman-owned business and will also oversee operations functions for the

company, including human resources, IT and marketing.

"Doran Companies is focused on strategic growth and Traci has demonstrated her strategic and operational skills," said President and CEO Anne Behrendt. "Traci's experience leading complex operations, driving change and building teams thoughtfully and decisively make her promotion a logical next step in her role at Doran companies."

Tomas is a real estate executive with more than 20 years of experience. Prior to joining Doran in 2019, she led operations for Continental Property Group, LLC, a national real estate investment and development company with a portfolio that had exceeded 4 million square feet of

office, industrial and multi-family properties.

"I am excited to work with Anne and the entire executive leadership team to chart a path forward as a newly-certified woman-owned business," said Tomas.

Tomas holds Master of Business Administration and Bachelor of Science degrees from St. Cloud State University. She is a licensed Minnesota real estate broker, a Certified Commercial Investment Member and a Certified Property Manager. She is an active member of multiple professional associations and was honored with a Personal Development Award from the Business Women's Circle (<https://www.thebwc.org/>), of which she is a member. ♦



BR
*Bituminous
Roadways, Inc.*

Providing Superior Asphalt Pavement Solutions
Parking Lots | Roadways | Trails | Athletic Surfaces
bitroads.com | 651-686-7001



Kraus-Anderson has been selected as construction manager for an extensive \$40 million project consisting of additions and modifications to the existing K-12 school complex originally built in 1930, located at the corner of 3rd Street NE (MN State Highway 11) and 6th Avenue NE in Roseau, Minn.

On May 12, voters approved a district bond referendum project that will prepare middle and high school students for success in careers with local businesses and in industries wherever they choose to live.

Designed by JLG Architects, the project consists of approximately 65,000 square feet of new construction and a 44,000-square-foot remodel. Improvements will enhance hands-on and collaborative learning by providing new spaces for educational programming and activities to improve student learning opportunities.

The majority of the work will be performed in the high school, which will get new classrooms, Career and Technical Education (CTE) and Music Suite for band and choir.

The project also adds administrative and common spaces and increases the size of the gym space to meet physical education, co-curricular and community programming needs.

In addition, aging building and major systems will be replaced, including ventilation, heating, electrical, lighting, roofs, exterior walls and insulation. Improvements will also address Americans with Disabilities Act (ADA) deficiencies, safety and security measures and fire safety codes.

Modifications will be made to the elementary school including new safety and security improvements at building entrances and at the north end of the school for parent and bus pick-up/drop-off.

Construction will begin in early July 2020 and is expected to be completed in the fall of 2022.

Roseau Community Schools is one of dozens of major K-12 construction projects Kraus-Anderson will work on this year during its "Summer Sprint," a critical, concentrated time during the summer months when school is not in session and when crews can perform work that ranges from new school construction to upgrades to deferred maintenance projects.

KA continues to lead the field of regional education construction projects and is currently ranked 8th in the nation in the construction of K-12 facilities by Building Design and Construction magazine. Over the past five years, KA has completed over \$1 billion in K-12 projects. KA's comprehensive school construction

services include facility analysis and budget approaches, leading to informed and successful referendum initiatives. ♦



Kraus-Anderson Construction Company (KA), one of the Midwest's oldest and largest commercial general contractors and construction managers, has been selected to build a new community pool and other athletic improvements for Baldwin-Woodville Area School in Baldwin, Wis.

On April 13, voters approved a \$12.5 million district bond referendum project that will also add a fabric dome over the pool for year-round

Cambridge-Isanti Education Learning Center

Independent School District #911 - Cambridge-Isanti Schools
Cambridge, MN



use; and a new community pool clubhouse with locker rooms, concessions, ticket office and stadium entry. The project will also feature new artificial turf at the stadium for all sports and the band; new softball and baseball field; expanded running track; and new stadium LED lighting.

The project is expected to begin in the spring of 2021 and will be completed in the fall of 2021.

“KA has had a great working relationship with Baldwin-Woodville Area Schools for the last decade,” said John Huenink, Kraus-Anderson’s vice president and director of education. “We look forward to bringing another project to a successful finish.”

Baldwin-Woodville Area School is one of dozens of major K-12 construction projects Kraus-Anderson will work on this year during its “Summer Sprint,” a critical, concentrated time during the summer months when school is not in session and when crews can perform work that ranges from new school construction to upgrades to deferred maintenance projects.

KA continues to lead the field of regional education construction projects and is currently ranked 8th in the nation in the construction of K-12 facilities by Building Design and Construction magazine. Over the past five years, KA has completed over \$1 billion in K-12 projects. KA’s comprehensive school construction services include facility analysis and budget approaches, leading to informed and successful referendum initiatives. ♦

Kraus-Anderson Construction Company (KA)

has completed a new \$10.8 million Cambridge-Isanti Woodland Campus for Cambridge-Isanti Schools located at 1700 305th NE Ave. in Cambridge, Minn.

Designed by Wold Architects and Engineers, the Cambridge-Isanti Woodland Campus will house over one hundred students in the ALC, Transitions and Setting IV programs. The 33,000-square-foot school is outfitted with state-of-the-art tools and equipment to help facilitate a unique learning atmosphere, including apartment-style classrooms to teach life skills, a full court-size gym, and sensory rooms for the Setting IV area.

Kraus-Anderson began work on the project in July of 2019. ♦

Rochon is near completion on the new ground up 72,000 square foot charter school for the owner, Friends of Prodeo Inc. Designed by DSGW Architects the new charter school

will include 41 classrooms, 15 pullout spaces for small group learning, a 5,104 square foot gymnasium, a serving kitchen, outdoor play space, associated office and administrative space.

Prodeo Academy is part of a network of college preparatory charter schools that help students develop skills and expand their opportunities to positively contribute to the society. Prodeo Academy currently has two locations: Minneapolis (Preschool through 5th grade) and in St. Paul (Kindergarten through first grade). The Minneapolis campus is relocating to 4141 University Ave NE in Columbia Heights, MN.

Moving to Columbia Heights allows the school to expand its current 575 scholars to over 800 scholars in grades Pre-Kindergarten through eighth grade. The total square footage of this charter school will be 72,000 square feet.

The eight month project is set to be complete by August. ♦

Kraus-Anderson has completed Washington County’s Wildwood Library located at 763 Stillwater Rd. in Mahtomedi, Minn. The new \$5.8 million library replaces the existing facility created to better serve the growing needs of the community.





Designed by Hagen, Christensen & McIlwain Architects, the new 12,500-square-foot library is 3,000 square feet larger than for former building, housing separate adult, teen, and children's areas that each open to spacious outdoor patios. The new interior features a fireplace and large conference room, as well as several quiet breakout spaces for studying or reading. ♦

For 50 years, Lakeview Methodist Health Care Services has been a Minnesota leader in skilled nursing. Lakeview Methodist provides 24-hour skilled nursing care for short- or long-term stays, offering a wide range of health and living services for the senior experiencing the need for prolonged or extensive health care services. Building on its long-standing reputation, Lakeview Methodist is constructing a new \$24 million, 72-bed skilled nursing facility in Fairmont, Minn.

For five decades, the campus has offered skilled nursing in the community and is one of only three in Martin County, the second oldest county in the state.

Located at 610 Summit Dr. on Lakeview Methodist's campus overlooking Budd and Sisseton Lakes, the new building will offer greater state-of-the-art amenities for more people. That's needed now more than ever because by 2025, one of four Minnesota adults will be 65 or older and at least 70 percent are expected to use long-term care services at some point.

Built by **Kraus-Anderson Construction** and designed by Wold Architects, the new 2-story, 86,000 square-foot building is being created in the emerging care center design known as a "Neighborhood Concept," which encourages companionship and sociability among residents. Lakeview Methodist will offer greater amenities for more people in a

homelike, warm, person-centered environment designed to uplift the senses and improve mental, physical and social health.

Lakeview Methodist currently offers physical, speech and occupational therapy, spiritual care and worship services, social work services, transitional care, IV therapy and medication assistance, as well as an activities director for intergenerational social services, daily group and individual activities. The new facility will feature wider hallways, a child daycare center, restaurant-quality dining room with chef-prepared meals, overnight guest room, community rooms, underground parking, gift shop, courtyard and gardens, outdoor decks and patios, and state-of-the-art monitoring and technology. Residents also will enjoy a movie theater, fitness center, beauty shop and barber services, café and laundry services.

"A greater level of comfort and dignity will be offered by creating private rooms in a homey, neighborhood style of living," said Deb Barnes, Lakeview Methodist administrator. "This affords everyone the same opportunities and better meets the demands of prospective residents and their families in the future, ensuring Lakeview has a place in your community for many years to come."

Construction is anticipated to be completed by fall 2021. ♦





Rochon has completed construction of North Loop's food hall, Graze Provisions | Libations. The two-story 17,236 square-foot food hall includes six kitchens allowing Graze to showcase different cuisines from a variety of the best chefs in Minnesota. Among the six kitchens there are two outdoor dining areas, two bars, and a coffee bar with a walk-up window right off the street allowing a quick and easy dine out option.

ESG Architecture & Design the designers of this building, included in their plans a large outdoor space with a yard and patio. They also

boast a 3,097 square-foot rooftop patio which includes fireplaces and an ample amount of seating allowing the guests to a first-class view of the downtown skyline, including Target Field. ESG Architects used their expertise to design a unique restaurant above an existing underground parking lot which had been leaking for quite some time. The site had been sitting for 13 years, undeveloped and in poor shape.

The recently opened food hall was designed for the surrounding community and took on the green initiative by not creating vehicle parking but instead, installed 20 bicycle parking stalls. This space caters to everyone from the local business employees grabbing a quick lunch to the friends gathering for a celebratory cocktail.

This concept of creating a food hall in Minneapolis creates opportunity for local chefs and cafes to be able to create a brand within the North Loop. The current restaurants include Carbon Coal-Fired Pit Beef, Fish Bowl Poké, Honey and Rye North Loop, Lu's Restaurant, MidNord Empanadas and Churros and Soul Bowl. In addition to these six restaurants plenty of beverages are available including craft cocktails designed by Jesse Held and beer brewed by local breweries. ♦

Kraus-Anderson (KA) has named Troy Stutz as senior project manager in the company's Minneapolis office.



A 33-year industry veteran, Stutz returns to Kraus-Anderson after serving as vice president of business development for RJM Construction

in Minneapolis. He was a project manager for KA from 1998-2013 when he provided preconstruction and project management across multiple market sectors in Minnesota, Iowa, Kansas and California. He also managed multiple projects for Gustavus Adolphus College in St. Peter, Minn., including the campus reconstruction after the 1998 tornado, Anderson Hall, Beck Academic Hall, Southwest Hall, Old Main Renovation and the Campus Center.

Stutz received his B.S. degree in Construction Management from Minnesota State University – Mankato; and is a LEED AP (Accredited Professional) and Certified Healthcare Constructor (CHC). He is a board member and past president of the Association of Medical Facilities Professionals (AMFP) Upper Midwest; and a member of ASHE, a professional membership group of the American Hospital Association; Minneapolis Downtown Council, St. Paul Chamber of Commerce, and Economic Development Association of Minnesota (EDAM). ♦

WOULD YOU LIKE TO SEE YOUR NAME OR YOUR COMPANY'S NAME IN THE MEMBER TO MEMBER SECTION OF CONSTRUCTION VIEWS?

If so, please send all company press releases, announcements and updates to Jenny Wothe, Executive Director, at info@mnconstruction.org.

MCA

4248 Park Glen Road
Minneapolis, MN 55416
(952) 928-4646 • fax (952) 929-1318
www.mnconstruction.org
info@mnconstruction.org

Jenny Wothe
Executive Director

WE CAN'T THANK YOU ENOUGH

**We thank the following
sponsors for their support:**

PLATINUM SPONSOR (\$1,000 LEVEL)



MCA

**MINNESOTA
CONSTRUCTION
ASSOCIATION**

MCA is a non-profit association dedicated to educating and promoting the construction industry. Statements of fact and opinion in this publication are the responsibility of the authors alone and do not necessarily reflect or imply the opinion of the members, directors or staff of MCA.