

CONSTRUCTION VIEWS

Education | Recognition | Networking

CONTENTS

- 2 | Calendar of Events
- 2 | President's Column
 - 3 | New Members
- 3 | Board of Directors
- 5 | Celebrating at the
MCA 2014 Awards
of Excellence
- 8 | Ask Ms. Awards
- 8 | Stop Construction
Project Nightmares –
Get on the Right Track
from the Start
- 9 | Member to Member
 - 14 | Sponsors

Half-Day Seminar: Networking, Presentation and Communication for Industry Professionals

Don't miss the half-day seminar on Networking, Presentation and Communication skills on Friday, April 11th. This seminar will provide young professionals the essential soft skills to start a successful career and industry veterans a chance to brush up on these critical talents. Agenda includes one-hour sessions on:

- Face to Face Presentations: What To Do - Or Not To Do - Before, During and After presented by Joe Egan
- Communications in the Workplace presented by Jeanette Grace
- Networking and Sales presented by Dawn Wagenaar

Registration Fees:

- MCA Member - \$85
- Non-Member - \$110
- Onsite Student/Faculty - \$20
- Virtual Attendee - Free (available only at partner schools specified in the online registration)

All attendees, including virtual attendees, must register to receive a certificate of completion. Continental breakfast and lunch will be provided.

Event Information

Date: Friday, April 11, 2014

Time: Registration & Networking 7:30 am - 8:00 am

Program 8:00 am - 11:35 am

Lunch 11:35 am - 12:35 pm

Live Location: Minnesota State University Mankato at Edina

7700 France Ave, Edina, MN 55435

Simulcast to our partner schools

[Click here for additional details and a link to online registration.](#)

Registration deadline is Friday, April 4.

Mission: The Minnesota Construction Association fosters education, recognition and networking for all industry professionals who collaborate, plan, create and sustain best construction practices.

Vision: The Collaborative place for the building industry

Calendar of Events

**Friday,
April 4, 2014**
MCA Networking
Breakfast

**Friday,
April 11, 2014**
MCA Half-Day Seminar:
Networking, Presentation
& Communication for
Industry Professionals

**Monday,
April 21, 2014**
MCA Board Meeting

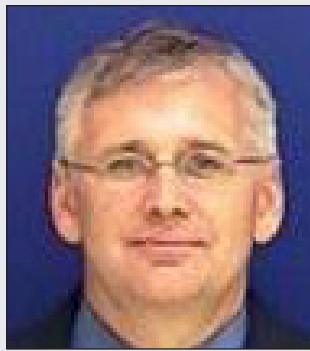
**Monday,
May 19, 2014**
MCA Board Meeting

**Wednesday,
June 4, 2014**
MCA Scholarship Golf
Tournament

**Monday,
July 21, 2014**
MCA Board Meeting

Visit www.mnconstruction.org
for more information and to
register today!

MCA is a non-profit association dedicated to educating and promoting the construction industry. Statements of fact and opinion in this publication are the responsibility of the authors alone and do not necessarily reflect or imply the opinion of the members, directors or staff of MCA.



PRESIDENT'S COLUMN

Gregg Johnson

I have always enjoyed springtime. It's the time of the year that you see everyone get a bounce in their step, lawns start to come alive, flowers start to bloom and new life begins. You see new graduates excited about the

future and what lies ahead and see construction projects abuzz with activity.

As we climb out of the winter months, it is a great time to embrace the seasonal change by networking with your peers, sharpen up your skill sets for the busy summer months ahead, gain new skills to improve your profession and get out into nature to breathe fresh air and warm the body.

MCA has the opportunity for you to accomplish all these tasks and goals. Starting in April, MCA hosts networking events to connect and reconnect with new and past industry professionals. MCA is providing a half day seminar to sharpen your skills with Face to Face Presentations, Communication in the workplace and Networking/Sales. MCA will again be hosting the annual Scholarship Golf Tournament at Deer Run Golf club in Victoria Minnesota to support the next generation of industry leaders by providing scholarships to students from our Higher Educational partners.

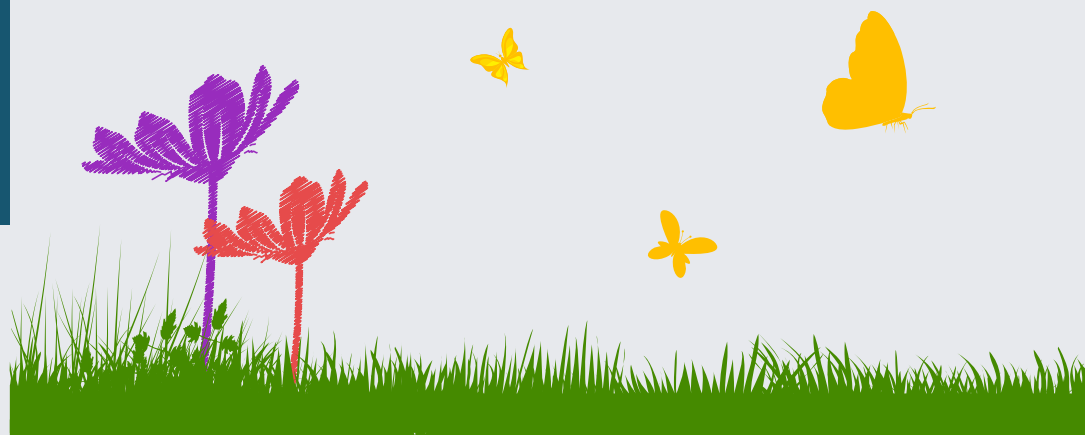
So what are you going to do to improve your career? How are you going to improve your skills and prepare yourself for the next challenge? What are you going to do to leave your imprint on the industry?

You control your future, you decide what goes on your schedule and you control what you want to get involved in and who you want to share in your experiences. So get started, begin your springtime with a new bounce in your step and map out how you prepare yourself for what lies ahead. Make it your priority to:

“Get Involved, Drive for the Future and Share the Message”

All the MCA events and activities are posted on the website. Take time on a regular basis to check on upcoming events and take the next step.

Have a great Spring!





Networking. Business Development. Education.

PLEASE HELP MCA WELCOME OUR NEWEST MEMBERS:

Henry Gallagher – Silver Communications

Silver Communications is a licensed low volt systems contractor. We have a proven track record of working with customers with one network connection to 500 network connections. We specialize in medical, retail and Office environments.

www.silvercommunications.net

Kyle Hardwick - Best & Flanagan LLP

Best & Flanagan is a full-service law firm that provides comprehensive legal services to well-known construction companies, general contractors, sub-contractors, suppliers and architects throughout Minnesota and beyond. Our construction attorneys possess an in-depth understanding of the construction industry which allows us to deliver high-value efficient legal solutions to clients.

www.bestlaw.com

Kate Noonan – Versacon Inc.

Versacon, Inc. is a Service Disabled veteran owned small business that provides services in General Contracting, Design-Build, Healthcare Construction, Construction Management, Tenant Improvements, Pre-Construction Services and Value Engineering. We create distinctive value by discovering client needs, developing dynamic solutions and delivering efficient results through teamwork, accountability and candor.

www.versaconinc.com

Please help MCA welcome our newest student members:

University of Minnesota

Josh Fossan
Colette Jaeger

MCA 2014 BOARD OF DIRECTORS

President

Gregg Johnson
Hammes Company

Vice President

Grant Tentis
Blanski Peter Kronlage
& Zoch, P.A.

Treasurer

Darrel Mullenbach, CPA, CCIFP
CliftonLarsonAllen LLP

Secretary

Chad Rettke
Kraus-Anderson Construction
Company

Past President

Nick Mannel, P.E., LEED AP
Loucks Associates

DIRECTORS

Paul Almen

Hammargren & Meyer, P. A.

Mark Becker

Fabyanske, Westra, Hart &
Thomson, PA

Mat Boie

Hanson Structural Precast

Fred King

INSPEC, Inc.

David Herzberg

Adolfson & Peterson Construction

Nick Reynolds

Rochon Corporation

Ryan Rydberg

Knutson Construction

STAFF

Corinna Hastings, CAE

Executive Director & Editor



BUILDING ENDURING RELATIONSHIPS AND STRONG COMMUNITIES



KRAUS-ANDERSON[®]
CONSTRUCTION COMPANY

www.krausanderson.com

Celebrating at the MCCA 2014 Awards of Excellence



MCA THANKS OUR 2014 AWARDS OF EXCELLENCE SPONSORS!

DINNER SPONSORS

**Kraus-Anderson Construction
Company
Stahl Construction**

CAT MODEL SPONSOR

Rachel Contracting

WINE SPONSORS

**Krech, O'Brien, Mueller & Associates
Steiner Construction Services, Inc.**

PRINTING SPONSOR

CES Imaging

POST-GALA COCKTAIL PARTY SPONSORS

**JE Dunn Construction
Loucks Associates**

DESSERT SPONSORS

**Blanski Peter Kronlage & Zoch, P.A.
CliftonLarsonAllen LLP**

RECEPTION SPONSORS

**Cobb Strecker Dunphy &
Zimmermann
Empirehouse, Inc.
Hammargren & Meyer, P.A.**

OTHER DONATIONS

**Empirehouse, Inc. – Projector
JE Dunn Construction – Photography
Rachel Contracting – Projector**



CONTRACTOR AND SUB-CONTRACTOR OF THE YEAR WINNERS



**General Contractor of the Year
Greiner Construction**



**Sub-Contractor of the Year
Kellington Construction**

MEMBER OF THE YEAR WINNER



**Member of the Year
Gregg Johnson**

AWARDS OF EXCELLENCE WINNERS



**New Construction Total Value Over \$10 Million
or Subcontractor Value Under \$1 Million
HealthPartners RiverWay Clinic
Kraus-Anderson Construction Company**



**Renovation, Expansion, or
Tenant Improvement Project
Longfellow Elementary School
Addition and Renovation
Kraus-Anderson Construction Company**



**Government Construction Project
Minnesota West Community & Techni-
cal College – Health & Wellness Center
Terra General Contractors**



**Green Or Sustainable Project
Gundersen Health Inpatient Behavioral
Health Building
Kraus-Anderson Construction Company**



**MCA Choice Award
Duluth International Airport's
New Passenger Terminal
Kraus-Anderson Construction Company**

Rely on Rachel Contracting ... Every Time.



Rachel Contracting brings exceptional value to each project it plays a role in. Every project is attacked with the client in mind. Rachel Contracting's professional approach ranges from providing clear and concise proposals to exceeding expectations in preconstruction planning, safety, client communication, innovation, building the project and project closeout.

The company's team possesses over 250 years of collective experience, making them some of the most knowledgeable, creative, and talented professionals in the business. This team of skilled individuals has successfully built a variety of the most challenging projects in the industry. Rachel Contracting will step up to handle any project. Big or small. Public, private, commercial or industrial.

◀ Earthwork

◀ Oil & Gas Field Services

◀ Demolition

◀ Environmental

◀ Renewable Energy

◀ Utilities



4125 NAPIER COURT NE, ST. MICHAEL, MN 55376
 OFFICE: 763-424-1500 • FAX: 763-424-1501
 WWW.RACHELCONTRACTING.COM



Ask

MS. AWARDS

If you have a question for Ms. Awards, please email it to Alana Sunness Griffith, Awards Chair, c/o Corinna Hastings at info@mnconstruction.org.

Dear Ms. Awards,

My company just completed a project that we would like to submit for one of the award categories for this year's Awards of Excellence. I realize the event doesn't happen until January 28, 2015, but I would like to get the ball rolling on our end so that we're prepared for the nomination submittal. Could you give me some insight into the timeframe?

Thanks,

Mr. Prepared

Dear Mr. Prepared,

It's great to hear that you already have a project that you'd like to submit for one of our awards categories. Typically the nomination forms are fine-tuned and released sometime in August or September. One thing we suggest you can do in the interim is to take or collect photos of your project. Good photos really help the judges when it comes time for them to review nominations. Being prepared with your nomination is going to save you money come this fall. There's always an early-bird discount if you submit before mid-November which is roughly a month before the final deadline of mid-December. Please keep your eyes open for updates and exact dates on the Awards of Excellence through the MCA website or the quarterly newsletters. We look forward to your submittal as well as celebrating another year of successful construction at the Awards of Excellence!

Thanks,

Ms. Awards

STOP CONSTRUCTION PROJECT NIGHTMARES - GET ON THE RIGHT TRACK FROM THE START.

Mark R. Becker, shareholder at Fabyanske, Westra, Hart & Thomson, and MCA board member, will be giving an all-day seminar on Construction Management/Design-Build in Minnesota on June 10, 2014 at the Holiday Inn Bloomington, I-35, 1201 West 94th Street.

Mr. Becker invites all MCA members to attend the seminar. MCA members are eligible for a 20% discount off of the registration fee! Please use discount code E4267574, and priority code 15999.

The particulars of the seminar, including registration, can be found online at <http://www.lorman.com/393449>, or by calling 866-352-9539, or by contacting Mr. Becker at 612-359-7620 or at mbecker@fwhtlaw.com.

The seminar has been approved for continuing education credit as follows: AIA 6.50, CC 1.0, MN CLE 6.50, MN Contractors (Pending), MN ENG 8.0. Mr. Becker hopes to see you at the seminar.

Member to Member

KRAUS-ANDERSON CONSTRUCTION COMPANY (KA) has completed construction on four Minot, N.D. schools damaged in the historic June 2011 flood.

Longfellow Elementary School – 42,387-square-foot addition and a 25,641-square-foot remodel to the existing school was completed July 24, 2013.

Jim Hill Middle School - 14,165-square-foot precast gymnasium and locker addition to existing school; was completed August 1, 2013.

Lewis and Clark Elementary School - 32,185-square-foot addition and remodel to existing school; was completed August 15, 2013.

Erik Ramstad Middle School – new 130,000-square-foot middle school; was completed November 22, 2013.

KA continues to lead the field of regional education construction projects and is currently ranked 7th in the nation in the construction of K-12 facilities by Building Design and Construction magazine. The company also remains the top construction manager of education facilities in the region, having completed over 200 K-12 projects totaling over \$700 million in the past five years. ■



KRAUS-ANDERSON REALTY (KA Realty) has named **MICHAEL KORSH** vice president. He is responsible for managing

all aspects of the company's new development projects. Korsh works from the KA Realty offices in Bloomington, Minn.

Korsh has served as the company's director of development since 2000.

He has over 16 years of diversified experience in the real estate industry, including development of projects in the medical, retail, office and housing sectors. Prior to joining KA Realty, he served as property manager for United Properties, where he managed in excess of one million square feet of office property.

Korsh has led the development of numerous notable Minnesota developments including Woodlake Medical Center in Woodbury; Brighton Village Shopping Center in New Brighton; Trails of Orono senior housing in Orono; Arbors at Ridges senior housing in Burnsville; 430 Oak Grove luxury apartments, a historic redevelopment in Minneapolis; and Crossroads of Chanhassen, a mixed-use commercial development in Chanhassen. Projects currently under construction include Deephaven Woods senior housing in Deephaven; and Engel Haus senior housing in Albertville.

Korsh earned his B.A. in English from Drake University. He is a Certified Commercial Investment Member (CCIM), Certified Property Manager (CPM) and licensed real estate broker in Minnesota and Wisconsin. He is a member of the Institute of Real Estate Management (IREM); Minnesota Shopping Center Association (MSCA); International Council of Shopping Centers (ICSC); National Association of Industrial and Office Properties (NAIOP); and Minnesota Commercial Association of Realtors (MNCAR). Korsh also serves on the board of directors of Kraus-Anderson Companies.

KA Realty leases and manages more than four million square feet of commercial property, including office, housing, industrial and retail shopping centers. KA Realty is part of the Kraus-Anderson family of companies, privately owned and managed by

the Engelsma family for over 75 years. Established in 1897, Kraus-Anderson provides services including commercial real estate development and management, construction, equipment financing and risk management to clients nationwide. Kraus-Anderson (www.krausanderson.com) is an Affirmative Action, Equal Employment Opportunity Employer. ■

DORAN CONSTRUCTION announced today that as part of a corporate restructuring the growing general contracting firm has moved two current employees into leadership positions.

Ryan Kuznia, who recently managed Doran's construction of the Be@ Calhoun Greenway 185-unit apartment complex in Minneapolis for Bigos Management and the 182-unit Junction Flats project for Trammell Crow in Minneapolis, has been promoted to Vice President/Director of Operations and will lead a team of project managers and construction superintendents involved in general contracting of various types of construction.

Also promoted was Scott Casanova, who currently is managing the construction of The Bridges, an 11-story 210-unit student housing property at the University of Minnesota—a project developed by its sister company, Doran Development. Casanova has been promoted to Vice President/Major Projects.

Kelly Doran, the owner of Doran Construction said the moves were made necessary as a result of the company's rapid growth from its inception in 2007, to today being among the top general contractors in the area; adding that, "currently, in the Twin Cities alone, we are the general contractor on over \$175 million in construction projects." ■



Have you thought about:

- How to control costs?
- If your costs for bidding and budgeting are right?
- How much your business is worth?
- What to do when you are thinking about retirement?

Many contractors have turned to us to help them run profitable businesses.

In addition to providing traditional CPA firm services, we help contractors focus on issues such as:

- Key performance indicators
- Project cost control
- Determining costs for bidding and budgeting
- Financial controls

Contact Grant Tentis, CPA, MBT, CVA today to discuss how we can assist you. Grant is a Shareholder and leader of our Construction Practice Group.

763.253.1171
gtentis@bpkz.com



Proud member and sponsor of MCA since 2007. Grant is active on the MCA Board and is currently the Vice President.

BLANSKI PETER KRONLAGE & ZOCH, P.A.

7500 Olson Memorial Highway, Suite 200
Golden Valley, MN 55427
www.bpkz.com

KRAUS-ANDERSON CONSTRUCTION COMPANY (KA) has hired Chris Knutson as assistant project manager and Abigail Heimel as project engineer. They will work in the company's Minneapolis office.

CHRIS KNUTSON received his B.S. in Construction Management from the University of Wisconsin-Stout, Menomonie, Wis. He holds certifications from the Occupational Safety & Health Administration (OSHA), Federal Emergency Management Agency (FEMA) and the American Red Cross in CPR/AED and First Aid.

ABIGAIL HEIMEL graduated with a B.S. degree in Civil Engineering and holds a certificate in Integrated Studies in Science, Engineering, and Society from the University of Wisconsin, Madison.

JOHN ROGOZ, vice president of Finance and controller for Kraus-Anderson Construction Company has received his Certified Public Accountant (CPA) designation from the Minnesota State Board of Accountancy. Rogoz is responsible for overseeing the financial activities of the construction company. He earned his B.S. in Business Administration from Saint Louis University and his M.S. in Taxation from Fontbonne College. Rogoz also holds credentials as Certified Management Accountant (CMA) and Certified Construction Industry Financial Professional (CCIFP). He currently serves on the board of House of Charity and is chairman of the Institute of Certified Construction Industry Financial Professionals. He is also an adjunct professor at The University of St. Thomas in St. Paul.

In addition, **JENNIFER BRUNDELL**, project assistant, has received her LEED Green Associate designation from the U.S. Green Building Council (USGBC). Prior to joining KA in 2013, she was a project coordinator at Minneapolis-based Fluid Interiors. Brundell received her B.S. in Interior Design from the University of Minnesota. ■

KRAUS-ANDERSON and Elion Partners, a Florida-based national real estate investment firm, today announced a new joint venture that will redevelop a 100-acre corporate campus at Interstate 94 and Radio Drive in Woodbury, Minn. The high-profile property will be transformed into a 700,000-square-foot commercial development with shops, restaurants and additional office space as well as plans for a hotel, bank, two medical office buildings and a day care. The property includes 300,000 square feet of new construction plus an existing 400,000-square-foot office building.

The joint venture expects the new development on the 100-acre site to include valuable amenities consistent with urban sites that will make the existing 400,000-square-foot office building an attractive home for large office tenants.

The partnership will retain Kraus-Anderson to develop the current grounds into pad-ready sites for the development of new retail, grocery, restaurants and shops. Site work on the multi-phased project is expected to begin in the summer of 2014.

“We are presently in lease negotiations with an established national hotel chain, a national high-end grocer and with several restaurant and retail tenants,” said Matt Alexander, Kraus-Anderson’s director of real estate development.

The 400,000-square-foot building and expansive acreage are situated on rolling hills and landscapes, which will be incorporated in the overall development plan. The property will be a destination-minded environment with eco appeal.

“From the beginning, we have worked closely with the City of Woodbury to bring out the best of this prime location to complement the strong attributes the city has to offer,” said Shlomo Khoudari, managing principal with Elion Partners. “The natural landscape and thoughtful public realms will tie the common areas together into a visually interconnected experience, which

will be pleasing to the office and retail patrons as well as to the Woodbury community.”

Following several unsuccessful attempts by other companies and investors to purchase and redevelop the property, the Elion and KA partnership and its collaborative process with the city, is welcomed news to many.

“We are very excited to partner with Kraus-Anderson on this new joint venture,” said Juan DeAngulo, managing partner at Elion. “Elion and KA share similar cultures and values, creating a strong relationship that will make this vision a reality.”

The City of Woodbury is a strategic partner and has been instrumental in helping to redevelop the property which has been vacant for nine years.

“The partnership between Elion and Kraus-Anderson is wonderful news for the city,” said Woodbury Mayor Mary Giuliani Stephens. “While Elion has yet to submit a formal development application for this proposal, they clearly have a plan for moving forward. We are excited for this development to evolve into another cornerstone of economic growth for the City of Woodbury.” ■

DORAN CONSTRUCTION

announced today that they have been chosen by Minneapolis-based developer Alatus to build Latitude 45, the 319-unit 13-story Class A market rate apartment project Alatus is developing on Washington Avenue South between 3rd and 4th Avenues in Minneapolis.

Doran Construction owner and Principal Kelly Doran said the contract awarded last week continues a phenomenal rate of growth for the 10-year-old general contracting firm. “Since 2010, we will have completed, or have under construction, 15 apartment building projects, including 2200 units with a total value of over \$330 million.” Doran added that “Currently, in the Twin Cities alone, we are the general contractor on over \$175 million in construction projects.”

Construction of Latitude 45 is expected to start this month and be completed in 2015. ■

Two **KRAUS-ANDERSON (KA)** construction professionals have received 2013 TOPS Awards from the Minnesota Subcontractors Association (MSA) at its annual gala last night. Doug Jaeger was honored as Project Manager of the Year and Rob Sticha as Project Superintendent of the Year.



DOUG JAEGER, vice president and project manager, joined KA in 1985 and has overseen hundreds of projects in numerous business sectors, including

healthcare, industrial, office, retail and hospitality. Some of his projects include those for Minnesota Eye Consultants, HealthPartners, SuperValu, Cub Foods, Target, SuperAmerica, City Center, Stantec (formerly Bonestroo), AT&T Wireless, Park Dental, Humana and many others. Jaeger received his B.S. in Industrial Technology, Estimating and Construction Management from the University of Wisconsin, Stout. He is a member of the Minneapolis Regional Chamber of Commerce.



ROB STICHA, project superintendent, joined KA in 1997 and has been involved in the construction industry for over 26 years. He has

supervised a wide variety of projects for United Health Group, GMAC – RFC, Cub Foods, Jerry’s Foods, Jerry’s Hardware, Cabela’s, Calhoun Square, City Center, National Sports Center, Park Dental and Comcast. Sticha received his certificate in Architectural Drafting as a construction superintendent from Hennepin Technical College. ■



AMERICAN ENGINEERING TESTING, INC. recently re-hired **CHRISTINE TILLEMA** as a Senior Petrographer. She previously

worked for AET and their affiliate group American Petrographic Services (APS) from 1995-2007. Since then she spent time with her family and gained additional laboratory experience over 6 years at Braun Intertec. Ms. Tillema’s expanded role is to manage quality control of the Petrographics group and act as a key client liaison - an expansion of her previous roles.

Ms. Tillema will assist Gerard Moulzolf, P.G., Vice President and Manager of the Petrographics group. According to Moulzolf “We are very happy to have Christine back. She is a great asset to our team, plying her decades of experience to our expanded client base and service platform.”

AET’s Petrographics and Construction Materials team is in the midst of a talent and capabilities expansion for the past three quarters. Ms. Tillema joins the Concrete Lab Manager- Wilma (Willy) Morrison, Principal Chemist, Bill Rebel, and Senior Consultant, Larry Sutter, in recent talent acquisitions. The team will work with the newly completed 10,000 sf laboratory remodel and expansion that includes chemical analyses, XRF, and XRD technology.

Ms. Tillema is excited to be back where she began and she has high hopes for changes in the industry. “I think the petrographic industry is headed in the right direction. The technology and commercial applications are starting to converge but we’re still seeing many of the same issues in many of our samples.” She notes however that the increased emphasis on sustainability, pervious materials, and self-consolidating concrete are some of the technologies that indicate the industry is paying attention to the need

for reform. To that end she is involved with AIPG, MCC, and ASTM – C09 committees. At home Ms. Tillema is a mother of an 11 year old son and 8 year old daughter with her husband, Glenn. The family’s activities keep her grounded and busy - she is a Brownie Troop Leader and outdoor adventure lover. ■

KRAUS-ANDERSON (KA) and Elion Partners, a Florida-based national real estate investment firm, today announced that Welsh/Colliers has been selected to market the retail portion of the 100-acre corporate campus at Interstate 94 and Radio Drive in Woodbury, Minn. Seasoned veterans Chris Simmons and Tom Palmquist will be the lead brokers for Welsh/Colliers.

KA and Elion are collaborating on the redevelopment of the high-profile property, which will be transformed into a 700,000-square-foot commercial development with shops, restaurants and additional office space as well as plans for a hotel, bank, two medical office buildings and a day care. The property includes 300,000 square feet of new construction plus an existing 400,000-square-foot office building.

“Adding Welsh/Colliers is a big step for the project,” said Matt Alexander, Kraus-Anderson’s director of real estate development. “We are very fortunate to bring on Chris Simmons and Tom Palmquist, two of the region’s most experienced and highly regarded retail leasing brokers who also have national resources at their disposal.”

Both Simmons and Palmquist are senior vice presidents at Welsh/Colliers, a Minnesota commercial real estate firm that specializes in the marketing of retail, industrial and offices space.

“This redevelopment is the most noteworthy commercial opportunity underway in the east metro, adding a significant number of jobs as well as offering an amenity-rich environment for businesses in one of the top retail trade areas in the Twin Cities,” said Simmons. “Woodbury has consistently shown good retail activity and low vacancy, even through the recent recession. We’re excited to be marketing this opportunity for Elion Partners and Kraus Anderson in an area with such high residential growth, incomes, and the retail pull of the entire east metro and western Wisconsin.”

KA and Elion expect the new development to be consistent with urban sites that will make the existing 400,000-square-foot office building an attractive home for large office tenants. Site work on the multi-phased project is expected to begin in the summer of 2014. ■

ADOLFSON & PETERSON CONSTRUCTION received the Minnesota Subcontractors Association’s (MSA) T.O.P.S. Award for projects over \$50 million.

The T.O.P.S. Award – which stands for Teamwork, Opportunities and Partnering with Subcontractors – recognizes top-performing general contractors who consistently demonstrate TOPS principles in their working relationships. Subcontractors use several criteria to nominate and elect contractors, including reasonable contracts, promoting job safety and security, competent project managers, realistic schedules, timely payment, respect in negotiations, and change order management.

The T.O.P.S. Award recognizes contractors who embody working relationships that illustrate Teamwork,



3614 County Road 101, Wayzata, MN 55391
(952) 473-5650 steinercs.com

*From budgets and blueprints to
bricks and mortar.
Construction expertise for hire.*

Opportunities and Partnering with Subcontractors. A&P was nominated by our subcontractors due to the excellent work done every day. ■



KRAUS-ANDERSON CONSTRUCTION COMPANY (KA) has promoted seven employees, including **BOB CARTER, LEED Green Associate,**

to vice president. Carter joined KA in 1990 and has more than 35 years of industry experience. Since, 2008, he has led all KA projects for the Metropolitan Airports Commission at the Minneapolis/St. Paul International Airport, including the Hubert H. Humphrey Terminal and parking ramp.

Other KA promotions include:

JAMES ERICSON and **MARK MILLER** – project managers to senior project manager

PAUL WILCZYNSKI, RYAN KLICK and **DUSTIN PHILLIPS, LEED Green Associate** – assistant project manager to project manager

KARA EKHOLM, LEED Green Associate - project engineer to assistant project manager. ■



DORAN COMPANIES has announced the hiring of Nancy Manser as the company's Director of Human Resources.

Manser, who formerly held a similar position at Johnson Outdoors in Mankato, will work across the Doran family of businesses to oversee and administer human resources functions and promote organizational growth.

Kelly Doran, principal and founder of Doran Companies, noted that adding the position at an executive level was necessary to accommodate the demands of a work force that this year

has nearly reached 100 full and part time employees.

“We are very fortunate to land a respected and experienced HR executive who was held in such high regard by her former company,” Doran said.

Manser, a graduate of Oklahoma State University, began her career with assignments for Target Corporation in Oklahoma, North Carolina and Minnesota, before joining Johnson Outdoors. ■

Cabela's Incorporated, the World's Foremost Outfitter® of hunting, fishing and outdoor gear, will celebrate the grand opening of its Woodbury, Minn., store Thursday, May 15. Cabela's stores are known as premier shopping and tourism destinations, drawing visitors from the local area and from hundreds of miles away.

A ribbon-cutting ceremony hosted by Cabela's executives will begin at 10:45 a.m. and doors will open for business at 11 a.m. Opening day will begin a weekend-long celebration featuring outdoor celebrities, events for the entire family, giveaways and more.

Woodbury's 85,000-square-foot next-generation store is located at 8400 Hudson Road in the Tamarack Village Shopping Center. It is Cabela's fourth Minnesota location – joining Rogers, East Grand Forks and Owatonna – and will employ approximately 185 full-time and part-time employees.

The building's exterior reflects Cabela's popular store model with log construction, stonework, wood siding and metal roofing. A large glass storefront allows customers to view much of the store's interior as they approach the building. In addition to thousands of quality outdoor products, the interior is designed to surround customers in an outdoor experience.

Cabela's is much more than a retail store and will provide unique attractions for every member of the family including:

- Hundreds of trophy animal mounts

re-created in their native habitats; some of the notable displays will include those from local outdoors enthusiasts;

- Cabela's hallmark two-story mountain, complete with wild game displays and a built-in aquarium, stocked with freshwater fish native to the region;

- Other highlights include a Gun Library, Bargain Cave, indoor archery range and archery tech room, fudge shop, deli and fly shop.

“The region's natural resources and its many passionate hunters, anglers, campers and outdoor recreation enthusiasts, as well as the many tourists it attracts from out of state, make the Woodbury area a perfect fit for Cabela's,” said Shelby Rockhold, general manager of the new store.

Rockhold and his staff will carry on the company's tradition of excellent customer service. Cabela's employees, most of whom are from the greater Woodbury area, are known for living the outdoor lifestyle and having intimate knowledge of outdoor products. Product offerings include hunting, fishing, camping, hiking, boating and wildlife watching gear, as well as outdoor clothing and outdoors-styled gifts and furnishings.

The Woodbury store is being built by Minneapolis-based **KRAUS-ANDERSON CONSTRUCTION COMPANY**.

Currently, Cabela's operates 50 stores across North America with plans to open 23 more over the next two years.

Would you like to see your name or your company's name in the *Member To Member* section of *Construction Views*?

If so, please send all company press releases, announcements and updates to Corinna Hastings, Executive Director and Editor, at info@mnconstruction.org or 4248 Park Glen Road, Minneapolis, MN 55416.

We Can't Thank You Enough!

**We thank the following
Gold Sponsor
(\$500 level) for their support:**

**Cobb, Strecker, Dunphy
& Zimmermann, Inc.**

**We thank the following
Silver Sponsor
(\$250 level) for their support:**

Carciofini Company

MCA

4248 Park Glen Road
Minneapolis, MN 55416
(952) 928-4646 • fax (952) 929-1318
www.mnconstruction.org
info@mnconstruction.org

Corinna Hastings, CAE
Executive Director and Editor