



MINNESOTA  
CONSTRUCTION  
ASSOCIATION

# CONSTRUCTION VIEWS

APRIL 2018

## CONTENTS

Leadership Training  
Academy | 1

President's Column | 2

Board of Directors | 2

New Members | 3

Calendar of Events | 4

Saints Game Networking  
Event | 5

Save the Date for  
Upcoming Breakfast  
Programs | 5

2018 MCA Scholarship  
Golf Tournament | 7

Celebrating the MCA 2018  
Awards of Excellence | 8

Member to Member | 10



Join us for collaborative training to construct better projects at the Annual MCA Leadership Training Academy and Construct\*ium Student Pentathlon.

The 2018 Leadership Academy is being held at Graduate Minneapolis (formerly The Commons Hotel) on April 18th from 7:30 am - 2:00 pm. It is being held just prior to the 54th Annual Associated Schools of Construction (ASC) International Conference. The Academy will include:

- Construction Industry Executives: Navigating the paths to success in the construction industry
- Risk and Risk Management: A collaborative approach to dealing with risk in the construction industry
- Keynote Speaker: Silent Impact - Influence Through Purpose, Persistence and Passion presented by Joe Schmit
- Pentathlon Contests

**When:** Wednesday, April 18, 2018 from 7:30 am – 2:00 pm

**Where:** Graduate Minneapolis (formerly The Commons Hotel)

**More Info:** [www.mnconstruction.org/events/leadership/](http://www.mnconstruction.org/events/leadership/) or  
[www.constructium.org/events](http://www.constructium.org/events)

**Register by April 11, 2018 to save!**

► *See list of sponsors on page 4*

**Mission:** The Minnesota Construction Association fosters education, recognition and networking for all industry professionals who collaborate, plan, create and sustain best construction practices.

**Vision:** The collaborative place for the building industry.

*Education. Recognition. Networking.*



# PRESIDENT'S COLUMN

**Mat Boie,**  
Wells Concrete

Greetings and happy spring! The weather is warming and construction is still full-speed ahead. Thanks for being a member and involved in the Minnesota Construction Association (MCA). As we move into the second quarter of 2018, I wanted to give everyone an update of what the Board and Committees have been up to in our quest to become the collaborative place for the building industry (our vision statement).

First off with a recap, we've had a number of great events starting with our annual Awards Gala in January – congrats again to all the winners. It was exciting to roll out our new logo during that event as well, and the fresh new approach we have to collaborate. The month of March was packed with a tour of the Minnesota State Capital Renovation project with JE Dunn leading the way to recognize MCA's Choice Award winner, an indoor golf tournament and networking event at Can Can Wonderland, and an amazing education seminar presented by M.A. Mortenson Company. These underlined words are part of our mission statement so it's clear we can check the box for March – but we have to remain focused and keep the momentum going. Great job to everyone with their efforts in putting together an outstanding month!

We have also been busy planning for the Leadership Training Academy (LTA) on April 18th. The lineup of presenters is spectacular – with plenty of time to network between dedicated times for learning from the experts in our local construction community. We're also excited to meet up and mingle with construction students during the Pentathlon competition event that is happening simultaneously within the LTA. Other MCA events coming up are a Doran Construction hosted Happy Hour, St. Paul Saints baseball game (home opener), a Construction Litigation program hosted by Ryan Companies, and our Annual Scholarship Golf Tournament at Deer Run in Victoria. Please check out our website ([mnconstruction.org](http://mnconstruction.org)) for further details on all events – hope to see you there.

The MCA is continuing to grow stronger with other local construction organizations. We are still that melting pot that includes a wide range of construction-related professionals giving you the chance to meet other industry professionals who you might not otherwise meet. Personally, I am still linked into the Minnesota Builders Exchange and MN Subcontractors Association and I always will be since these groups are specific to Wells Concrete. In addition to these groups, also being an MCA member has increased the opportunity to network and build relationships with a wide array of people all under one roof including Architects, Engineers, General Contractors, Subcontractors, Owners, Attorneys, Accountants, Educators, and Students so I find that valuable and very worthwhile – and I'm sure you do too.

Lastly, our Committees are doing such a fantastic job this year at keeping everything organized and planned out. If you're looking to volunteer and meet other members within our group, this is a great way to do it. Feel free to call me at 763.235.8412 or email at [mathew.boie@wellsconcrete.com](mailto:mathew.boie@wellsconcrete.com) if you would like to find out more ways to be involved. Also, feel free to come to a board meeting to check out in-depth details of our group.

Have a safe and fun day and again I hope to see you at the next event!

## MCA 2018 BOARD OF DIRECTORS

### PRESIDENT

**Mat Boie**  
WELLS CONCRETE

### VICE PRESIDENT

**Briena Kohout**  
Grendahl Mechanical

### TREASURER

**Grant Tentis, CPA, MBT, CVA**  
Smith, Schafer & Associates

### SECRETARY

**Heather Grazzini-Sims**  
Carciofini Company

### PAST PRESIDENT

**Paul S. Almen**  
Ryan Companies

### DIRECTORS

**Brett Grendahl**  
Grendahl Mechanical

**Gregg Johnson**  
Hammes Company

**Paul Kolias**  
Doran Construction

**Mike Lisowski, P.E.**  
KOMA

**Dave Lyste, P.E.**  
Rachel Contracting

**Patrick North**  
SitesForBuilders.com

**Sarah Paul**  
JE Dunn Construction

**Allie Zeman**  
Adolfson & Peterson  
Construction

### STAFF

**Corinna Hastings, CAE**  
Executive Director & Editor



## MINNESOTA CONSTRUCTION ASSOCIATION

*Education. Recognition. Networking.*

## PLEASE HELP MCA WELCOME OUR NEWEST MEMBERS:

### **GARDNER BUILDERS**

Gardner Builders is a hospitality company in the commercial construction business. We focus on service work, tenant improvement, commercial ground-up and healthcare builds.

[www.gardner-builders.com](http://www.gardner-builders.com)

### **MCGOUGH CONSTRUCTION**

From new construction to renovation - with world-class architects and trusted subcontractors- McGough has a history of collaborative partnering that leverages the power of people and the advantage of cross-functional expertise. Our diverse work spans verticals such as corporate, industrial, health care, institutional, housing, education, worship, performing arts and retail spaces.

[www.mcough.com](http://www.mcough.com)

### **MOLIN CONCRETE PRODUCTS COMPANY**

Founded in 1897, Molin Concrete Products is a proud designer, manufacturer and installer of precast/prestressed concrete components serving the 7-state Midwest region. Molin Concrete specializes in precast concrete components: hollow core planking, precast/prestressed beams and columns, precast stadia and architectural and structural precast wall panels.

[www.molin.com](http://www.molin.com)



**CLEANRESPONSE**  
FLOOD AND FIRE RESTORATION



### **24 HOUR EMERGENCY SERVICE**

- |   |  |
|---|--|
| <input checked="" type="checkbox"/> <b>Water Damage</b>                 | <input checked="" type="checkbox"/> <b>Reconstruction</b>                    |
| <input checked="" type="checkbox"/> <b>Fire Damage</b>                  | <input checked="" type="checkbox"/> <b>Temporary Heating</b>                 |
| <input checked="" type="checkbox"/> <b>Storm Damage</b>                 | <input checked="" type="checkbox"/> <b>Thermal Imaging</b>                   |
| <input checked="" type="checkbox"/> <b>Mold Remediation</b>             | <input checked="" type="checkbox"/> <b>Equipment Rental</b>                  |
| <input checked="" type="checkbox"/> <b>Insurance Claim Coordination</b> | <input checked="" type="checkbox"/> <b>Sewage and Trauma Scene Clean-ups</b> |

**651-646-3408**

[www.CLEANRESPONSE.com](http://www.CLEANRESPONSE.com) | BC216404



# CALENDAR OF EVENTS

**Thursday, April 5, 2018**

Happy Hour at Doran Construction

**Tuesday, April 10, 2018**

MN United Stadium – U of M Construction  
Alumni Tour

**Wednesday, April 18, 2018**

Leadership Training Academy

**Monday, April 23, 2018**

MCA Board Meeting

**Wednesday, May 16, 2018**

Secrets to Winning Subcontracts – How to  
Get More Work at Higher Margins

**Monday, May 21, 2018**

MCA Board Meeting  
Saints Game Networking Event

**Wednesday, June 6, 2018**

Scholarship Golf Tournament

**Wednesday, June 13, 2018**

Construction Litigation: Lessons from the  
Trenches Part II

**Monday, June 25, 2018**

MCA Board Meeting

**Wednesday, July 18, 2018**

Your Company 2.0

**Monday, July 23, 2018**

MCA Board Meeting

**Tuesday, August 7, 2018**

Boat Cruise on Mississippi River

**Monday, August 27, 2018**

MCA Board Meeting

**Monday, September 24, 2018**

MCA Board Meeting

**Monday, October 22, 2018**

MCA Board Meeting

**Thursday, November 1, 2018**

MCA Fifth Annual Soiree: A Gathering of  
Construction Professionals

**Monday, November 26, 2018**

MCA Board Meeting

**Monday, December 17, 2018**

MCA Board Meeting

Visit [www.mnconstruction.org](http://www.mnconstruction.org)  
for more information and to  
register today!



## MCA & Construct\*ium Thank Our Generous Sponsors!

### Event

Wells Concrete

### Platinum

Procore Technologies

### Job Interview Competition

Rauenhorst Recruiting Company

### Toastmaster Table Topics

Loeffler Construction & Consulting

### Pursuit Competition

Ryan Companies

### Pecha Kucha Competition

Gardner Builders

### Negotiation Competition

Adolfson & Peterson

### Leadership Kiosk

Kraus-Anderson

### Silver

Lejeune Steel

McGough

Rachel Contracting

RJM Construction

### Bronze

Anchor Bank, Division of Old National Bank

Braun Intertec Corporation

Clean Response

Cobb Strecker Dunphy & Zimmermann

Doran Construction

Egan Company

INSPEC, Inc.

KOMA

Rochon

### Supporter

Carciofini

Empirehouse, Inc.

JE Dunn Construction

Merchants Bank

Peterson Sheet Metal

Thomas-Grace Construction, Inc.

Weis Builders



McGough is a  
proud sponsor  
of the MCA.



**McGOUGH**

Learn how we can help  
you build your future!

[www.mcgough.com](http://www.mcgough.com)



photo credit: <http://saintsbaseball.com/>

## Saints Game Networking Event – May 21

Join fellow MCA members on Monday, May 21 for the St. Paul Saints Home Opener! This is your chance to see the new stadium. MCA has reserved the Craft Beer Corner for the event. The ticket price includes a game ticket, meal and one beverage ticket.

- Gates and the Craft Beer Corner open at 1:30 pm;  
Game begins at 3:00 pm
- Early Bird registration by April 13: Member \$35;  
Non-Member \$55
- Regular registration April 14 - May 4: Member \$45;  
Non-Member \$65
- Registration closes at midnight on May 4, 2018
- Max number of tickets 100

### SPONSORSHIP OPPORTUNITIES

- Event Sponsor (1) \$750
- Food and Beverage Sponsor (4) \$200/each

[Click here to register!](#)

## – SAVE THE DATE FOR UPCOMING BREAKFAST PROGRAMS –

### Secrets to Winning Subcontracts – How to Get More Work at Higher Margins, A General Contractor's Perspective

Wednesday, May 16, 2018

Please join us for this casual and informative program on May 16th at the office of the Minneapolis Builders Exchange. Rochon V.P. Nick Reynolds will moderate a panel discussion including three General Contractors followed by 30 minutes of audience Q & A with panel members. This is a fantastic opportunity to network with fellow Subcontractors as well as gain valuable first-hand insight into what GCs look for when reviewing bids. This program is sponsored by the MCA and hosted by the Minneapolis Builders Exchange.

### Construction Litigation: Lessons from the Trenches Part II

Wednesday, June 13, 2018


Legal Updates and Primers on: Employee Fringe benefits, Indemnification and Subrogation in Contracts, and Mechanic's Liens and Bond Claims.

### Your Company, 2.0

Wednesday, July 18, 2018

What they don't tell you in business school is that innovation is not about coming up with ideas. It's not even about coming up with creative, inventive ideas and new technologies. The business landscape is littered with good ideas. What we've learned at KA, and what we preach, is that innovation is about risk taking and culture. It's highly personal and even psychological. The trick to innovation is implementing the ideas within your current business without cannibalizing it. Prepare for an interesting twist on innovation that will not leave you feeling old, tired, and outmoded. Instead, feel motivated, inspired, and mentally prepared for Your Company, 2.0.

***Please visit [www.mnconstruction.org/calendar](http://www.mnconstruction.org/calendar) for additional details and registration.***



We measure our success by the  
success of our client partners.

### Protect your risk outcomes in an increasingly risky world.

Cobb Strecker Dunphy & Zimmermann is committed to one goal: offering unparalleled expertise in crafting client specific risk management solutions. For nearly 100 years we have provided an unrivaled level of service with the foundation of our business based upon our core values: Integrity, Insight, Innovation and Impact.

Established in 1919, CSDZ has grown into a nationally recognized specialty risk management organization with expanded industry focus in construction, energy, transportation, design, healthcare and professional services. Privately held and fiercely independent, our mission is to listen, understand, advocate, educate, serve and improve our clients.

Visit us at [csdz.com](http://csdz.com) to learn more about solutions for your business.



cobb strecker dunphy & zimmermann

*Contributing to Our Partners Success*



# Register Today for the 2018 MCA Scholarship Golf Tournament!

## EVENT INFORMATION

Wednesday, June 6, 2018 | 11:00 AM - 6:00 PM

Deer Run Golf Club | 8661 Deer Run Drive, Victoria, MN 55386



[Click here](#) for additional information and to register today!

Back by popular demand - the MCA Scholarship Golf Tournament returns to Deer Run Golf Club on Wednesday, June 6, 2018.

### ► REGISTRATIONS ARE DUE FRIDAY, MAY 18, 2018

Don't miss the opportunity to join fellow construction industry professionals for a great day of golf at the course that was voted "Best Public Golf Course in Minnesota" by WCCO viewers!

### FEES: Individual Golfer (\$170)

\*Golfer fee includes: driving range, putting green, round of golf, golf cart, box lunch, happy hour, steak dinner and awards ceremony

### ► SPONSORSHIP OPPORTUNITIES ARE AVAILABLE!

As a non-profit organization, we are asking for support from MCA members and local businesses to offset the costs of this tournament. We invite you to be a part of this event, which will provide you with an excellent opportunity to promote your organization's services to the construction industry in Minnesota.

- Event Sponsor (\$1,500) (Limited to 6)
- Premium Hole Sponsor (\$900)
- Hole Sponsor (\$400)
- Dinner Sponsor (\$250) (Limited to 3)
- Driving Range Sponsor (\$250) (Limited to 3)
- Putting Green Sponsor (\$500) (SOLD OUT)
- Happy Hour Sponsor (\$250) (Limited to 3)
- GPS Golf Cart Sponsor (\$250)
- Lunch Sponsor (\$150) (Limited to 3)

## MANY THANKS TO OUR 2018 SPONSORS FOR THEIR GENEROUS SUPPORT!

### EVENT SPONSOR

- Sonus Interiors

### PREMIUM HOLE SPONSORS

- CliftonLarsonAllen
- Grendahl Mechanical
- Rachel Contracting
- Versacon Inc

### HOLE SPONSOR

- CBIZ MHM
- CES Imaging
- Bituminous Roadways, Inc
- Wells Concrete

### DINNER SPONSOR

- Clean Response

### GPS GOLF CART SPONSORS

- JE Dunn Construction
- Ruehl + Associates
- SiteForBuilders.com

### PUTTING GREEN SPONSORS

- Kline-Johnson and Assoc
- Molin Concrete Products

### LUNCH SPONSOR

- Carciofini Company

# CELEBRATING THE MCA 2018 *Awards of Excellence*

## MCA THANKS OUR 2018 AWARDS OF EXCELLENCE SPONSORS

### EVENT SPONSORS

- Ballard Spahr LLP
- Clean Response
- Cobb Strecker Dunphy and Zimmermann
- Doran Construction
- Larkin Hoffman

### CAT MODEL SPONSOR

- Rachel Contracting

### DINNER SPONSORS

- Olympic Companies
- Ryan Companies

### RECEPTION SPONSORS

- Adolfson & Peterson
- CliftonLarsonAllen
- KOMA
- Kraus-Anderson
- Meyer Contracting
- Wells Concrete

### PROGRAM AND SIGN DESIGN SPONSOR

- Adolfson & Peterson Construction

### PROGRAM PRINTING SPONSOR

- Kraus-Anderson

### SIGN PRINTING SPONSOR

- CES Imaging

### PHOTOGRAPHY

- Terra General Contractors







**GENERAL CONTRACTOR OF THE YEAR**  
RJM Construction



**SUB-CONTRACTOR OF THE YEAR**  
VEIT



**SERVICE PROVIDER OF THE YEAR**  
Brock White



**DESIGN PROFESSIONAL OF THE YEAR**  
KOMA



**MEMBER OF THE YEAR**  
Allie Zeman

## Awards of Excellence Winners



**New Construction**  
**Total Value Under \$15,000,000**  
Wayzata Mill Street  
Parking Ramp  
*Adolfson & Peterson Construction*



**New Construction**  
**Total Value Over \$15,000,000**  
Nicollet Mall Roadway  
and Streetscape  
*Meyer Contracting Inc.*



**Renovation, Expansion, Or Tenant  
Improvement Project**  
Municipal Building Historic Clock  
Face Renovation  
*Versacon, Inc.*



**Government Construction Project**  
Rogers High School Additions  
*Terra General Contractors*



**Green/Sustainable Project**  
University of Minnesota  
Combined Heat & Power Plant  
*Adolfson & Peterson Construction*



**Research, Innovation or Use  
of Technology**  
Replication of Historic  
Column Capitals  
*Terra General Contractors*



**Subcontractor/  
Specialty Contractor Project**  
Westminster Presbyterian  
Church Expansion  
*Empirehouse*



**MCA Choice Award**  
Minnesota State  
Capitol Restoration  
*JE Dunn Construction*

# MEMBER TO MEMBER

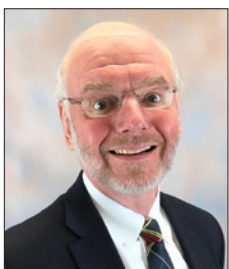


**KRAUS-ANDERSON CONSTRUCTION COMPANY (KA)** has hired **JOSEPH BAUMANN** as senior project manager. He will work in the

company's Minneapolis office.

Baumann comes to KA with more than 25 years of senior management experience in building demolition and carpentry labor. Since 1994, he was the founder and president of St. Paul-based Century Construction Co., Inc., where he led a team focused on environmentally responsible commercial construction projects in the medical, educational, industrial and retail sectors in the Twin Cities and throughout Minnesota.

Baumann, LEED AP, graduated from Dunwoody Institute with a degree in Architectural Drafting and Construction Estimating. He is a member of the Minnesota Subcontractors Association (MSA). ♦



**KRAUS-ANDERSON CONSTRUCTION COMPANY (KA)** has promoted **MIKE BENZ** to vice president of information technology.

As vice president, Benz will guide the operations and execution of all IT systems within the KA family of companies, including its cyber security efforts.

Benz joined KA in 2008 as director of information technology and has been an instrumental resource in the growth of KA's technical capabilities, including the implementation of new software and systems that improved the company's operating functions. He also leads the company's Technology Innovation R&D team to

explore and recommend innovative technologies to move the business to the next level of efficiency and competitiveness.

In the past two years, Benz guided two seamless moves for KA. In 2016 he orchestrated all technology for the company's move to temporary offices. He also managed the seamless transition of the opening of Kraus-Anderson's new headquarters in 2017 by bringing new systems and technology to the state-of-the-art facility.

Benz also is highly regarded as a thought leader in the critical area of cyber security and recently has earned his M.S. degree in Security Technologies from the University of Minnesota. He has served on the advisory committee of the annual Cyber Security Summit in Minneapolis, which brings together industry, government and academic interests to improve the state of cyber security on both domestic and international levels. Benz is the chair of the National Builders Alliance's peer group of IT professionals and has spoken on cyber security at its CEO's forum. He also served on a panel that discussed the topic of IT transformation at a recent Premier CIO Forum, which is an elite invitation-only educational assembly of IT professionals.

"Mike maintains a high level of knowledge and applies contemporary thought to the prospective needs of our business -- an approach that reaches beyond the role of a traditional IT manager," said Al Gerhardt, KA's president and COO. "His dedicated focus, progressive strategy and responsible decision-making have contributed significantly to KA's growth and success."

Benz also earned degrees in Psychology from Binghamton University, NY, and in Computer Programming from Brown Institute. ♦

Summerhill Commercial Real Estate, LLC President Peter Kordonowy announced that it has acquired Steiner Development and Steiner Commercial Realty from David Kordonowy and Phillip Baum.

Effective January 2nd, 2018, Phillip Baum, President of Steiner Construction Services, Inc., announced a stock purchase of shares held by long time business partner David Kordonowy, CEO of Steiner Construction Services, Inc. After a long and successful career as CEO of these companies David Kordonowy has moved on to other ventures.

With Summerhill's acquisition, they now have a combined management portfolio consisting of 35 buildings totaling 1,947,000 sf, and will continue to provide property management and brokerage to its clients throughout the Twin Cities.

**STEINER CONSTRUCTION SERVICES, INC.**, a licensed General Contractor in 35 States will continue its services throughout the Twin Cities, and nationally. The company will continue to be led by President, Phillip Baum and Vice President, Justin Iverson.

Summerhill Commercial Real Estate, LLC and Steiner Construction Services, Inc., as separate companies, will continue operations at the current location of 3610 County Road 101, Wayzata, MN 55391, with Summerhill keeping a second office location in Chanhassen, MN. ♦

After nearly a year-long community engagement process, **DORAN COMPANIES** announced that during its Committee of the Whole meeting the City of Minneapolis Planning Commission unanimously approved its proposal to develop a new \$100 million-plus luxury apartment community. The multi-family development is a joint venture between Twin Cities-based Doran Companies and CSM Corporation and



will include 372 units, contributing to the City's desire for increased density while also voluntarily providing 10 units of affordable housing.

"We are excited about this partnership, which has included significant input from the community and city staff, and which we believe will add to the vitality of this dynamic neighborhood along the Mississippi River," said Doran Companies founder Kelly Doran. "Our long-term commitment to this unique part of the downtown – including our existing 338-unit luxury apartment community at Mill and Main – remains a key focus of our company and we are excited to develop, build and manage additional property here for the long-term."

"The Expo," named as an homage to the former Industrial Exhibition Hall that was once immediately across the street from the existing site, will be built as a partnership between Doran Companies and CSM Corporation. Doran Companies acquired the 2.54

acres in the spring of 2017. In addition to the 372 units of housing and 400 parking spaces, the development will include more than 3,175 square feet of retail space – ensuring a higher use for what is currently a surface parking lot and adding to the vitality of this neighborhood.

"Doran Companies and CSM Corporation share a long-standing commitment to the Twin Cities," said CSM CEO Gary Holmes. "We are looking forward to breaking ground later this year and bringing this vision to life."

Consistent with other Doran residential properties, the amenity-rich residential community will include clubrooms and entertainment suites with chef-grade kitchens and a terrace-level outdoor pool with dining areas, grills, bar, fire features, bocce ball and a putting green. Additional amenities will include a business center, state-of-the-art fitness center, spa, sauna and game room with a golf simulator.

Project renderings are available at: <https://dorancompanies.com/news/#!mpc-unanimously-approves-expo>. ♦



**AMERICAN ENGINEERING TESTING (AET)** has promoted **ROBERT (BOB) ELLIOTT** to Chief Operating Officer (COO) of the longstanding

engineering consulting firm, effective January 2, 2018. The announcement came during a corporate meeting where leaders shared a revised organizational structure to support the firm's growth plans.

As COO of AET, Bob will be responsible for improving the efficiencies of the operational units and continue his focus on process improvement. He will be building on the strengths of the 400+ employee-owned firm and overseeing growth



**Contact Us Today!**  
**(952) 897-1420**  
3800 American  
Boulevard West  
Suite 1500  
Minneapolis, MN 55431  
**[www.rauenhorst.com](http://www.rauenhorst.com)**

# RAUENHORST RECRUITING COMPANY

.....  
We specialize in placing high quality candidates in the Built Environment industry and related sectors. Retaining Rauenhorst Recruiting gives you a client-focused process implemented by highly-skilled professional recruiters.  
.....

Architecture • Civil Engineering • Commercial Builders • Earthwork • Electric Power • Elevators  
Home Builders • Manufacturing • Mechanical Contracting



and expansion of our 20+ regional offices. "Bob is an experienced and trusted leader who consistently delivers results. I am confident in Bob's ability to align AET's resources with industry-leading operational practices to drive growth," said Dave Rettner, president.

With over 35 years of experience in the environmental industry and over 20 years at AET, Bob has been around the business of engineering consulting long enough to see the many growth opportunities that exist, both in the wider industry and from an operational standpoint. As Vice President and manager of AET's Environmental Technical Services, Bob has been responsible for the management and growth of the extensive line of environmental technical services, including soil and groundwater sampling, air emissions testing and ambient air modeling. He is responsible for the development of AET's "mobile workforce", serving clients located outside of the firm's traditional geographic service areas.

Operational efficiency and functionality are twin passions of Bob's. There is a painting in his office, in full view of any visitor who stops in, of a partially filled glass of water. Bob likes to ask his visitors what they see when they look at the glass. "Answers of half empty or half full are typical," says Bob. "I don't see that. I see it as the glass is not the right fit for what is inside." This concept of "finding the right fit" is something Bob will bring to the team as COO. He is not interested in what works for other companies of similar size, but instead focuses on what is the right fit for current and future operations.

Bob's commitment to the operational process has been evident throughout his career and he has brought tangible changes to the field by utilizing his knowledge of engineering and business operations to streamline internal processes. He continually strives to improve operational procedures, focusing on solutions that serve the whole group. "I have experienced many different forms of operational management in my career," comments Bob. "The

difference with AET is that every day I see the faces of the employee-owners. I get the chance to talk with those who hold a financial stake in our success and can brainstorm new ways build on our efficient procedures. At the end of it all, we are all accountable to the employees." ♦

The Hilton Downtown Rochester, a new 20-story, upscale hotel located at the southeast corner of South Broadway and East Center Street will hold a topping off ceremony at 11:00 a.m., Wednesday, January 31, 2018. The event, which will include a beam signing, commemorates a significant milestone in the construction progress of Rochester's newest downtown hotel.

Expected to open in the spring of 2019, the luxury hotel is being developed by Rochester-based Titan Development & Investments in partnership with Chicago-based Harbor Bay Real Estate Advisors.

**KRAUS-ANDERSON** is the general contractor and Rochester's HGA Architects and Engineers designed the project. The debt is provided by First National Bank of Omaha, the lead bank.

The 264-room Hilton is one of the first projects under the City of Rochester's Destination Medical Center (DMC) initiative, a public-private partnership to position Rochester, Minnesota as the world's premier destination for health and wellness. The DMC ([www.dmc.mn](http://www.dmc.mn)) is the largest economic development initiative in Minnesota and one of the largest in the nation.

"This topping off is a great milestone and highlights the significant progress being made in the DMC district," noted Lisa Clarke, executive director of the DMC Economic Development Agency. "We look forward to the opening of the Hilton hotel in 2019, which will be a wonderful addition to downtown Rochester and its skyline."

The hotel tower will connect to the downtown skyway system for easy access to Mayo Clinic, Mayo Civic Center, shopping and dining. The Hilton will feature ballrooms



**KRAUS-ANDERSON®**  
[WWW.KRAUSANDERSON.COM](http://WWW.KRAUSANDERSON.COM)



and conference rooms that are strategically designed to meet the growing business demands of Rochester.

"Spacious guest rooms and suites, first-class service and upscale amenities will meet the needs of distinguished travelers coming to Rochester for business or visiting Mayo Clinic," said Sheila Thoma, spokesperson for Titan Development & Investments and Harbor Bay Real Estate Advisors. "The upscale dining and retail will also be a great benefit for the local community."

Kraus-Anderson also is providing preconstruction services to the City of Rochester on the new 632-plus car municipal parking ramp adjacent to the Hilton.

Kraus-Anderson has long served the Rochester area. Some of its recent projects include: 318 Commons, mixed-use downtown student housing and retail development; Rochester Community and



Technical College Regional Sports Facility; wellness center addition to Shorewood Senior Campus; and renovation of a 150-year-old building for Grand Rounds Brewing Company; recent school projects for Pine Island and Stewartville School Districts; Avani Living, a 107-unit urban housing complex with Fresh Thyme grocery; and renovation of RST International Airport, to be completed this spring. ♦

Gustavus Adolphus College will begin the expansion and renovation of the iconic Nobel Hall of Science in early February, College President Rebecca Bergman announced today. When the project is completed in 2020, Gustavus science facilities will rival those of the top liberal arts colleges in the nation.

The \$70 million project, which will nearly double the building's footprint to 177,300 square feet and

The Rochon advertisement features a large background image of a commercial building with a sign that reads "10700 Park Place on France". To the left of this building is a "Mobile" sign, and to the right are signs for "Rita's Cafe" and "DENTISTRY". Below this image is the Rochon logo, which consists of a stylized blue circle with white diagonal lines. To the right of the logo is the word "Rochon" in a large, bold, black sans-serif font. Below "Rochon" is the tagline "Commitment, Flexibility, Reliability and Capability" in a smaller, black sans-serif font. At the bottom of the advertisement is another image of a modern office building with a glass facade. In the bottom right corner, there is contact information for Rochon: "28 2nd St. NW, Suite 200", "Osseo, MN 55369", "Telephone: 763-559-9393", and "nreynolds@rochoncorp.com". Below this is the website "www.rochoncorp.com" followed by social media icons for Facebook, Twitter, LinkedIn, and Instagram.

# With You From the Ground Up

Ballard Spahr is proud to support the Minnesota Construction Association and congratulates this year's Contractor of the Year, RJM Construction, and all of the other Awards of Excellence winners.

From project planning through completion, our real estate and construction litigation attorneys guide you through every phase of your project and partner with you to tackle any challenges along the way.

- Development agreements and project financing
- Construction contract negotiation and drafting
- Bid protests and contract disputes
- Construction defect litigation
- Land use and title disputes
- Condominium, hospitality, and resort/timeshare litigation
- Partnership/member disputes
- Mechanic's liens, receiverships, and foreclosures



**Ballard Spahr**  
LLP

**James M. Lockhart**  
612.371.3953  
lockhartj@ballardspahr.com

Atlanta | Baltimore | Boulder | Delaware | Denver | Las Vegas | Los Angeles | Minneapolis | New Jersey | New York | Philadelphia | Phoenix | Salt Lake City  
Sioux Falls | Washington, DC | [www.ballardspahr.com](http://www.ballardspahr.com)



completely renovate the existing facilities, received final approval from the Gustavus Board of Trustees on Friday, January 26. Nobel Hall houses the departments of biology, chemistry, geography, and geology along with interdisciplinary programs in biochemistry/molecular biology and environmental studies.

"Academic excellence is at the core of the Gustavus experience," Bergman said. "This facility is a tangible example of our strong commitment to support state-of-the-art, hands-on learning opportunities and student-faculty collaboration."

The 74,000 square-foot south expansion will include new laboratories, teaching and study spaces, and connect Nobel Hall with Schaefer Fine Arts Center, creating a laboratory theatre. By pairing Science, Technology, Engineering, and Mathematics (STEM) with the Arts, Gustavus is intentionally focusing on the interdisciplinary nature of a liberal arts education. The combination of traditional STEM disciplines with the Arts is consistent with the growing STEAM education movement that produces well-rounded students who are prepared to drive innovation. A 12,400-square-foot north expansion will highlight student/faculty research and showcase the College's signature event, The Nobel Conference®, and the College's living connection with the Nobel Foundation in Stockholm, Sweden.

The project will be managed by **KRAUS-ANDERSON CONSTRUCTION**. The company's partnership with Gustavus stretches over 40 years and includes the campus reconstruction after the 1998 tornado and recent projects such as Anderson Hall and Beck Academic Hall. Hastings+Chivetta, based in St. Louis, Mo., serves as the architect of record for the project.

Work on the first phase of the project, the Nobel Hall expansion, will commence in early February. Once the expansion is completed in summer of 2019, the existing building will be completely renovated, with the entire project expected to be

concluded by the beginning of the 2020-2021 academic year.

"Our mission compels us to provide students with the skills and experiences they need to lead lives of leadership and service in society," Bergman said. "Momentum at Gustavus continues to grow thanks to the generosity of our donors, the vision of the Board of Trustees, and the commitment of our talented faculty." ♦



**KRAUS-ANDERSON CONSTRUCTION COMPANY (KA)** has promoted **MATT JOHNSON** from project manager to senior project

manager. He works in the company's Minneapolis office.

Johnson joined KA in 2015 as a project manager and has overseen notable Minnesota healthcare projects, including those for Allina District One Hospital, Faribault.; Lakeview Hospital and Stillwater Medical Group, Stillwater; and FirstLight Clinic Expansion and Renovation, Mora.

Johnson received his B.S. in Construction Management from the University of Minnesota and served as crew chief in the Minnesota Army National Guard. He also holds a Certified Healthcare Certificate (CHC) and ASHE Healthcare Construction Certificate (HCC). ♦



The Rochester office of **KRAUS-ANDERSON CONSTRUCTION COMPANY (KA)** has hired **CYLE ERIE** as director of business development.

Most recently, Erie served as a principal and regional director for Braun Intertec in Rochester, where he developed and executed the company's business strategy for the south region of Minnesota, Iowa, Wisconsin and Kansas City.



Erie received his Master of Business Administration from St. Cloud State University and his Bachelor of Civil Engineering from the University of Minnesota – Twin Cities. He is a licensed professional engineer and has been involved with the Minnesota Society of Professional Engineers, Rochester Area Chamber of Commerce, the Builders Exchange of Rochester, and Leadership Greater Rochester. ♦

**KRAUS-ANDERSON CONSTRUCTION COMPANY (KA)** has completed a \$6.6 million addition to the campus of Mount Olivet Lutheran Church to support the church's nearly 100-year-old music and education

tradition. Mount Olivet, Minneapolis campus, is located at 5025 Knox Ave. S. in Minneapolis.

Designed by ESG Architects, the 27,000-square-foot project adds a new 200-seat choir rehearsal hall, six new classrooms for Mount Olivet's growing education, School of Music programs and community summer programs. The project also includes an office suite for the music department staff. In addition to the six new classrooms, 20 existing classrooms were renovated. Three of the new classrooms include operable partitions to provide flexible use and the ability to create divisible spaces.

Other highlights feature high-tech video projection and state-of-the-art audio equipment. Acoustical boards and curtains were also added throughout the rehearsal spaces and education classrooms to maximize the quality of the sound.

On the exterior of the building, limestone veneer finishes were used to match the church's existing façade.

Kraus-Anderson has a long-standing relationship with Mount Olivet dating back to the 1940s. KA has worked on multiple projects at four of Mount Olivet's Minnesota campuses, including Mount Olivet Lutheran Church and Mount Olivet Careview Home in Minneapolis, Rolling Acres campus in Victoria and Cathedral of the Pines in Lutsen. In addition, KA will be working on a future project at Mount Olivet's West Campus in Victoria. ♦

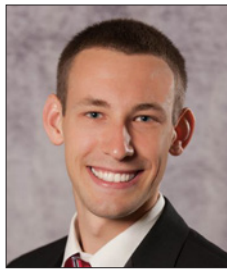


The Duluth office of **KRAUS-ANDERSON CONSTRUCTION COMPANY (KA)** has hired **GREG YETTER** as senior project manager.

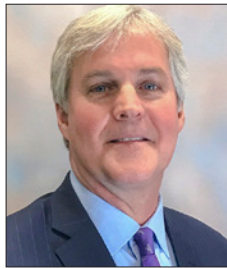
Yetter was a senior project manager at JR Jenson Construction in Duluth, where he managed small and medium-sized commercial and industrial projects.

Yetter received his Bachelor of Biology from the University of Minnesota – Duluth; and his Bachelor

of Civil Engineering from the University of Minnesota – Twin Cities.



In addition, Kraus-Anderson has promoted **PAUL NOLL** to assistant project manager. He has served as a project engineer since 2015. ♦



**KRAUS-ANDERSON DEVELOPMENT COMPANY** has hired commercial real estate veteran Craig Patterson as vice president of

development. He will be responsible for new business and relationship creation, and for project real estate transactions, including negotiations, deal-making, leasing and business partnerships.

KA Development is an integrated approach to grow Kraus-Anderson's portfolio and to address the market's expanding and dynamic commercial real estate activity.

Patterson has 29 years of experience of development and leasing in industrial build-to-suit investment properties. Most recently he was the regional manager at Minneapolis-based Marcus & Millichap, where he was responsible for the firm's investment commercial real estate properties. He also held executive management positions with Minneapolis development firms CSM Corporation, First Industrial Realty Trust, Welsh Development and Opus Northwest.

Patterson has developed many notable industrial projects for companies such as Archway Marketing Services, Kimberly-Clark, Jarden Corporation and ConAgra Foods.

"For more than two decades, Craig has successfully developed commercial real estate and investment projects in the greater Midwest," said Matt Alexander,

senior vice president of Kraus-Anderson Development Company. "He has earned a notable reputation of maximizing investment value, managing associated risks and growing portfolios. Craig will be a terrific asset to our organization."

Patterson received his B.S. degree in Horticulture Management from Iowa State University, Ames. He is a past-president of the Minnesota Chapter of NAIOP (Commercial Real Estate Development Association) and is a licensed real estate broker in Minnesota. ♦

The St. Paul, Minn.-based team of **AMERICAN ENGINEERING TESTING, INC. (AET)**, and Erickson Roed & Associates (ERA) has earned a National Recognition Award for exemplary engineering achievement in the American Council of Engineering Companies' (ACEC) 51st annual Engineering Excellence Awards (EEA) for its role in the Downtown East project in Minneapolis, Minn.

Downtown East is one of the largest-ever private projects in Minneapolis, revitalizing a long-neglected 12.5-acre commercial area. When vast amounts of potentially contaminated soil were discovered on site, AET created a strategy to maximize the reuse of the soil and remove potential obstructions for construction.

Open-floor building designs created an opportunity for AET and ERA to adapt cutting-edge construction technologies to construct level floors within a traditional structural steel frame building. The two large towers on the site feature equally innovative foundation designs, combining vertically placed rock with drilled piers to offset the limited thickness of the underlying bedrock.

The project is among 146 engineering achievements from throughout the nation and the world being recognized by ACEC as the year's finest examples of engineering excellence, and eligible for additional top national honors. Judging for final awards—known industry-wide as the "Academy Awards of the engineering industry"—took place in February,



conducted by a national 36-member panel of built environment leaders, along with experts from government, the media and academia. Award criteria focuses on uniqueness and originality, technical innovation, social and economic value, and generating excitement for the engineering profession. ♦



**AMERICAN ENGINEERING TESTING (AET)** is pleased to announce that **GREGORY REUTER, P.E., P.G., D.GE.** has been promoted

to Vice President of Geotechnical Engineering. In his new role, Mr. Reuter will focus on providing senior-level technical expertise, staff training, and market development for the company's geotechnical engineering services division.

Mr. Reuter has over 30 years of experience in the design and construction of specialty geotechnical and structural projects, particularly earth retention and deep foundations, in-situ testing, slope stability analysis, and mechanically stabilized earth retaining wall and slope design. Mr. Reuter has published several papers and regularly presents to various academic and industry organizations.

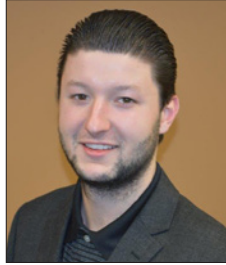
"Greg's wealth of experience in geotechnical engineering and proven leadership skills has considerably expanded our ability to solve the most complex engineering challenges," said Dave Rettner, P.E., President of AET. "I'm excited to announce his promotion and look forward to seeing how his direction and leadership continues to help AET innovate and grow."

Mr. Reuter is a licensed Professional Engineer (P.E.), Professional Geologist (P.G.), and a Board Certified Geotechnical Engineer (D. GE.) by the Academy of Geo-Professionals. Reuter graduated with a B.S. in Geological Engineering from the University of Minnesota, and a M.S.

in Geotechnical Engineering from the University of Illinois – Chicago. ♦



**ROCHON** has hired Sam Wellman as an Assistant Project Manager (APM). Sam is a graduate of St. Johns University where he received his B.A. in Global Business.



Rochon recently promoted Trevor Bisping to Project Manager. Trevor has been with Rochon since March of 2015 as an APM and has worked closely with the Superintendents and team Project Managers.



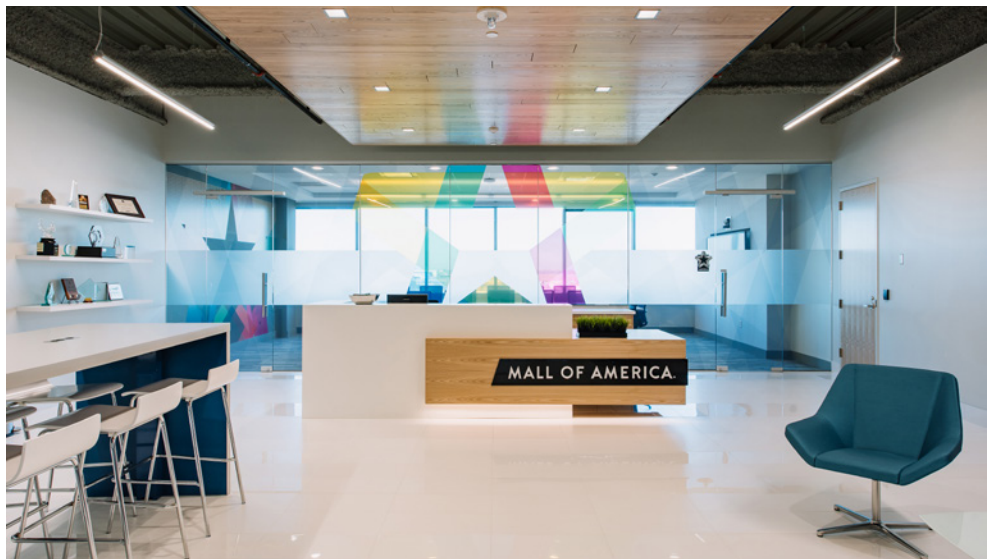
Recent

Educational Accomplishments include Sam Wellman, B.A. Global Business with Minor in French and Sarah Molnau, Professional Certificate in Business Communications. ♦

Mall of America recently relocated their executive, operational and construction offices. Formerly located in the malls basement level, the

offices lacked natural light and open space. They took the opportunity to move to the fourth and fifth floors of the newly built office building – "The Offices @ MOA". **KOMA** worked with Cunningham Group and GH+A on the project. The team created a light filled environment that reflected the brand and encouraged a collaborative culture. They developed a design vehicle that enabled the interpretation of the brand to be tangibly applied through color and pattern in carpet and strategically placed playful wall graphics. The translation and repetition of MOA's signature ribbon runs throughout the space in varied forms and materials. Low paneled workstations and color blocks on groupings of offices create neighborhoods and promote ease of way-finding. Full height glass on interior spaces allows the natural light to permeate throughout the space. "One of MOA's core values is "Enthusiastic" - energy is infectious!" says interior designer Leanne Freed, "we feel the space is a fitting representation of their brand reflected in their physical environment." The offices were featured in Minneapolis/St. Paul Business Journal's Cool offices in 2017 and made the top 10 list for the year. ♦

The extensive renovation of Arthur H. Anderson Hall on the campus of Gustavus Adolphus College has been awarded the prestigious LEED Gold certification from the USGBC







(U.S. Green Building Council). The achievement recognizes projects that are designed, constructed and operated for improved environmental and human health performance.

The 27,465-square-foot project was constructed in 2016 by **KRAUS-ANDERSON** and designed by BWBR. Anderson Hall houses Gustavus' Department of Education, Center for Academic Resources and Enhancement, Writing Center, John S. Kendall Center for Engaged Learning and Bonnier Multifaith Center. The renovation of the 70-year-old academic center provides spaces for education, advising and faith exploration, as well as, a three-story open gathering space to encourage collaboration and group work for students and faculty.

Located on the college's main academic mall, the historic Kasota stone building opened in 1948 and originally served as the Gustavus library. It was renamed A.H. Anderson Hall in 1973 and became the home of the social sciences until 2011.

To earn the elite LEED Gold award, buildings must demonstrate performance standards that include sustainable site developments, water savings, waste management, energy efficiency, materials selection and indoor environmental quality.

Some of the strategies used to earn Anderson Hall's LEED status feature selecting low-emitting materials, implementing green cleaning and equipment policies, and achieving energy cost savings of nearly 40 percent below baseline.

The multifaith center includes low-flow water fixtures, as well as daylighting strategies to enhance education practices and building performance without sacrificing privacy. The building structure was 91 percent reused, including much of the original Mankato-based limestone, and over 95 percent of the construction waste was recycled. In addition, the project featured new boilers, which replaced Anderson Hall's original heating system that was previously connected to a campus-wide steam system that runs through tunnels.

A natural connection to the community, the walkable site is covered with draught-resistant native plants. ♦

The Duluth office of **KRAUS-ANDERSON CONSTRUCTION COMPANY** (KA) has hired **DAN MARKHAM** as director of business development.

Markham has more than 25 years of experience in finance, business development, real estate and construction. Most recently he was



an executive consultant for Minnetonka-based The Platinum Group, a management consulting company.

He also was the executive vice president and corporate secretary for Duluth-based Capstan Corporation.

His experience in corporate governance includes currently serving as a director of Duluth-based GPM, Inc., an industrial products manufacturer. He also was a director of National Bank of Commerce of Duluth, where he also served as the interim CEO.

Markham received an MBA in Finance and Accounting from Regis University, Denver, Colo.; and a B.S. in Economics from St. John's University, Collegeville, Minn.

He is an active member of the Duluth community and has served on numerous area boards, including the Area Partnership for Economic Expansion (APEX), The Northspan Group, Duluth Legacy Endowment Fund, Downtown Duluth Waterfront District, Northland Country Club and Holy Rosary School Board. ♦

**WOULD YOU LIKE TO SEE YOUR NAME OR YOUR COMPANY'S NAME IN THE MEMBER TO MEMBER SECTION OF CONSTRUCTION VIEWS?**

If so, please send all company press releases, announcements and updates to Corinna Hastings, Executive Director and Editor, at [info@mnconstruction.org](mailto:info@mnconstruction.org)





Project  
Management



Quality  
& Safety



Construction  
Financials



Field  
Productivity



App  
Marketplace

# DESIGNED TO RUN CONSTRUCTION

Procore's universal platform connects your team, applications, and devices in one centralized hub. From bidding to closeout, collaborate in real time with all your teams, on any device.

With Procore, do more than run great projects, run a great business.



**PROCORE** | [procore.com](http://procore.com)

# MCA

4248 Park Glen Road  
Minneapolis, MN 55416  
(952) 928-4646 • fax (952) 929-1318  
[www.mnconstruction.org](http://www.mnconstruction.org)  
[info@mnconstruction.org](mailto:info@mnconstruction.org)

Corinna Hastings, CAE  
Executive Director and Editor

## WE CAN'T THANK YOU ENOUGH

**We thank the following  
Silver Sponsor  
(\$250 level) for their support:**

**Bituminous Roadways, Inc.**



MCA is a non-profit association dedicated to educating and promoting the construction industry. Statements of fact and opinion in this publication are the responsibility of the authors alone and do not necessarily reflect or imply the opinion of the members, directors or staff of MCA.

**MCA**

**MINNESOTA  
CONSTRUCTION  
ASSOCIATION**