

April 2017

CONSTRUCTION VIEWS

Education | Recognition | Networking

CONTENTS

- 2 | President's Column
- 2 | Board of Directors
 - 3 | New Members
- 4 | Calendar of Events
- 5 | 2017 Scholarship Golf Tournament
- 6 | Awards of Excellence
- 8 | Member to Member
- 15 | Sponsors

4th Annual MCA Leadership Academy and 2nd Annual Construct*ium Pentathlon

Join fellow MCA members at the US Bank Stadium on Friday, April 21st for the 4th Annual Leadership Academy. This event will be held in conjunction with the Construct*ium 2nd Annual Pentathlon (visit www.constructium.org/events.html for details on the event competitions and registration for students and faculty).

MCA has two top-notch speakers lined up for this event:

- Dean Hyers with SagePresence will speak on Winning Presence for Business Development: Making the Most of Every Opportunity
- Liz Weatherhead will speak on Four Easy Steps to Conflict Resolution

The event will close with a networking lunch for both industry professionals and students, followed by a panel presentation with industry experts (more information will be available soon).

Following the panel presentation, attendees will have the option to tour the stadium!

REGISTRATION FEES:

- MCA Member: \$100 if you register by Tuesday, April 18; \$125 for onsite registration
- Non-Member: \$135 if you register by Tuesday, April 18; \$160 for onsite registration

**Note – Online pre-registration will be available until Tuesday, April 18; register by that date to save \$25.*

[Click here](#) for more information and to register by April 18.

The membership committee is looking for member companies to host or sponsor an upcoming event!

For more information or to let us know what you are willing to provide, please contact the membership chair, Heather Grazzini-Sims at heather.grazzini@carciofini.com.

THANK YOU!

Mission: The Minnesota Construction Association fosters education, recognition and networking for all industry professionals who collaborate, plan, create and sustain best construction practices.

Vision: The Collaborative place for the building industry



PRESIDENT'S COLUMN

Paul Almen,
Arthur Chapman Kettering Smetak & Pikala, P.A.

Spring is finally here! I always love when spring comes around. The snow melts, Cardinals and Robins return, and the construction projects begin in earnest. This year all three seem to have come early. The early onset of construction projects means we are all in for a busy summer.

As we are gearing up for this busy time of year, we should reflect on the little things that have helped each of us become more successful. For me, and for many of you, becoming active in the Minnesota Construction Association has opened numerous doors, built relationships, and improved skills through the many networking and educational opportunities provided. This year is no different especially since attendance at the MCA events is up. We just had our annual awards banquet, and we are proud to report nearly a fifty percent increase in attendance. Your involvement in the MCA helps makes you and the construction industry stronger. Over the next three months there are a number of upcoming events that you can take advantage of and will provide opportunities for growth, learning, and networking.

The MCA and Construct*ium, the MCA's student outreach committee, are proud to be hosting the Leadership Academy and Pentathlon Competition on Friday, April 21, 2017 at the U.S. Bank Stadium. Industry professionals will get to hear two top-notch speakers: Dean Hyers with SagePresence will speak on Winning Presence for Business Development: Making the Most of Every Opportunity; and Liz Weatherhead will speak on Four Easy Steps to Conflict Resolution. Meanwhile, students will be competing in the five pentathlon competitions including: job interviews, public speaking, capstone, pecha kucha, and negotiation skills. The two events will close with a networking lunch for both industry professionals and students, followed by a panel presentation with industry experts. The day will end with tours of the stadium. We hope all of you will be able to join us for this wonderful event.

On May 17, 2017, MCA will be hosting a breakfast education seminar titled "Construction Litigation- Lessons from the Trenches." A panel of three experienced construction attorneys will discuss recent changes in the law along with practical advice garnered from real world situations. See page 4 for additional information.

June 7, 2017, is the date of the ever popular MCA golf tournament at Deer Run Golf Club. This is a wonderful event that sells out every year. Make sure you don't miss it. Details and a link to register are on page 5.

In addition to these events, we would love to hear from you. Please share your company news with us. We will include your latest highlights in our quarterly newsletter. As always, the MCA's website contains all the information on upcoming events. Please visit at mnconstruction.org. I hope you will get involved and join us for some education and networking.

MCA 2017 BOARD OF DIRECTORS

PRESIDENT

Paul Almen

Arthur Chapman Kettering Smetak & Pikala, P.A.

VICE PRESIDENT

Mat Boie, LEED AP

WELLS CONCRETE

TREASURER

Grant Tentis, CPA, MBT, CVA

Smith, Schafer & Associates

SECRETARY

Briena Kohout

Kellington Construction, Inc.

PAST PRESIDENT

Nick Reynolds

Rochon Corporation

DIRECTORS

Heather Grazzini-Sims

Carciofini Company

Brett Grendahl

Grendahl Mechanical

Gregg Johnson

Hammes Company

Mike Lisowski, P.E.

Krech, O'Brien, Mueller & Associates, Inc.

Ben Newlin

Terra General Contractors

Sarah Paul

JE Dunn Construction

Chad Rettke

Kraus-Anderson Construction Company

Allie Zeman

Adolfson & Peterson Construction

STAFF

Corinna Hastings, CAE

Executive Director & Editor



Education. Recognition. Networking.

PLEASE HELP MCA WELCOME OUR NEWEST MEMBERS:

GAUGHAN CONSTRUCTION

Gaughan Construction is a full service commercial construction company specializing in new construction and renovation. We are committed to completing your construction project on time and within budget. Our focus is on innovative and creative solutions tailored to your project's individual needs. We provide the highest quality construction with a focus on customer service and satisfaction.

www.gaughancompanies.com

HANSEN THORP PELLINEN OLSON, INC.

Hansen Thorp Pellinen Olson, Inc. (HTPO) is a responsive and reliable professional services firm based in Minneapolis with over 25 employees, providing complete design and construction services in the areas of: Civil Engineering, Land Surveying, Landscape Architecture and Construction Management. HTPO's multi-disciplinary staff will provide the resources, experience and technical knowledge to meet your project objectives.

www.htpo.com

KONE INC.

KONE invented MRL (Machine Room-Less) Traction Elevators in 1996. KONE EcoSpace, MonoSpace and MiniSpace elevators are available for a variety of applications. We provide design, budgeting, bid proposals, service/maintenance contracts, repair, parts and complete modernization of elevator, escalators and a variety of other vertical transportation equipment.

www.kone.us

LARSON KING, LLP

Larson King's construction attorneys have decades of experience providing clients with practical risk avoidance and insurance advice. If litigation is needed, they are ready

to roll, having successfully litigated hundreds of construction cases. No matter what the challenge, let Larson King's experience guide you to the right result.

www.LarsonKing.com

SHAW-LUNDQUIST ASSOCIATES, INC.

Founded in 1974, Shaw-Lundquist is a second generation, family owned general contractor. We are one of the largest Asian American Contractors in the United States, with offices in the Midwest and Western Regions. Discover how we are building better lives, on time and on budget. Shaw-Lundquist builds with Integrity and PRIDE.

www.shawlundquist.com

WENCK CONSTRUCTION, INC.

Wenck is a leader in construction, engineering, emergency response, and real estate, serving Minnesota, North Dakota, South Dakota, Wyoming, Colorado and Georgia.

www.wenck.com

PLEASE HELP MCA WELCOME OUR NEWEST STUDENT MEMBERS:

Minnesota State University, Mankato

- Mansour Alsagoor

Mayer Lutheran High School

- Mitchell Johnson

Southeast Technical Institute

- Steven Williams

St. Cloud State University

- James Oman

CALENDAR OF EVENTS

Friday, April 21, 2017

4th Annual Leadership Academy
and 2nd Annual Pentathlon

Monday, April 24, 2017

MCA Board Meeting

Wednesday, May 17, 2017

Construction Litigation – Lessons
from the Trenches

Monday, May 22, 2017

MCA Board Meeting

Wednesday, June 7, 2017

2017 MCA Scholarship Golf
Tournament

Monday, June 26, 2017

MCA Board Meeting

Monday, July 24, 2017

MCA Board Meeting

Monday, August 21, 2017

MCA Board Meeting

Wednesday, September 13, 2017

Do They Deserve to Work with
You? Attract the Right Clients

Monday, September 25, 2017

MCA Board Meeting

Monday, October 23, 2017

MCA Board Meeting

Monday, November 27, 2017

MCA Board Meeting

Monday, December 18, 2017

MCA Board Meeting

Visit www.mnconstruction.org
for more information and to
register today!

– SAVE THE DATE –



CONSTRUCTION LITIGATION – LESSONS FROM THE TRENCHES

WEDNESDAY, MAY 17, 2017

Breakfast & Networking 7:30 AM - 8:00 AM

Program 8:00 AM - 9:30 AM

This session will consist of a panel of three construction litigation attorneys presenting updates on recent changes in the law that will affect construction in Minnesota. They will present case studies from real world experience with time for questions at the end of the session.

Speakers:

- David Hammargren (Larkin Hoffman)
- Patrick Lee-O'Halloran (Thompson Tarasek Lee-O'Halloran PLLC)
- Jonathan M. Zentner (Arthur Chapman Kettering Smetak & Pikala, P.A.)

Moderator: Paul Almen (Arthur Chapman Kettering Smetak & Pikala, P.A.)

[Click here](#) for more information and to register today!

Thank you to our Generous Breakfast Program Sponsors:

- Arthur Chapman Kettering Smetak & Pikala, P.A.
- Larkin Hoffman
- Thompson Tarasek Lee-O'Halloran PLLC

Register Today for the 2017 MCA Scholarship Golf Tournament!

EVENT INFORMATION

Wednesday, June 7, 2017 | 11:00 AM - 6:00 PM

Deer Run Golf Club | 8661 Deer Run Drive, Victoria, MN 55386



[Click here](#) for additional information and to register today!

Back by popular demand - the MCA Scholarship Golf Tournament returns to *Deer Run Golf Club* on **Wednesday, June 7, 2017**.

► REGISTRATIONS ARE DUE FRIDAY, MAY 19, 2017

Don't miss the opportunity to join fellow construction industry professionals for a great day of golf at the course that was voted "Best Public Golf Course in Minnesota" by WCCO viewers!

FEES: Individual Golfer (\$170)

*Golfer fee includes: round of golf, golf cart, box lunch, happy hour, steak dinner and awards ceremony

► SPONSORSHIP OPPORTUNITIES ARE AVAILABLE!

As a non-profit organization, we are asking for support from MCA members and local businesses to offset the costs of this tournament. We invite you to be a part of this event, which will provide you with an excellent opportunity to promote your organization's services to the construction industry in Minnesota.

- Event Sponsor (\$1,500) (Limited to 6)
- Premium Hole Sponsor (\$900)
- Hole Sponsor (\$400)
- Lunch Sponsor (\$150) (Limited to 3)
- Dinner Sponsor (\$250) (Limited to 3)
- Driving Range Sponsor (\$250) (Limited to 3)
- Putting Green Sponsor (\$250) (Limited to 3)
- Happy Hour Sponsor (\$250) (Limited to 3)
- GPS Golf Cart Sponsor (\$250)

MANY THANKS TO OUR 2017 SPONSORS FOR THEIR GENEROUS SUPPORT!

EVENT SPONSORS

KELLINGTON
IC CONSTRUCTION, INC.

LAKETOWN
ELECTRIC
CORPORATION

Larkin
Hoffman
ATTORNEYS

PREMIUM HOLE SPONSORS

- Atomic Recycling
- CliftonLarsonAllen
- Empirehouse, Inc.
- INSPEC Inc.
- Maverick Cutting and Breaking
- Northern Technologies, LLC
- Rachel Contracting, Inc.
- Rochon Corporation
- Sonus Interiors

HOLE SPONSORS

- Adolfsen & Peterson Construction
- CBIZ MHM, LLC
- Ruehl + Associates
- SitesForBuilders.com

LUNCH SPONSORS

- Carciofini Company
- Clean Response
- Wells Concrete

HAPPY HOUR SPONSORS

- Krech, O'Brien, Mueller & Associates
- Newton Bonding
- WTG Terrazzo & Tile, Inc.

GPS GOLF CART SPONSORS

- JE Dunn Construction
- Marsh & McLennan Agency
- Meyer Contracting
- Scaffold Service Inc.

CELEBRATING THE MCA 2017

♦ Awards of Excellence ♦

MCA THANKS OUR 2017 AWARDS OF EXCELLENCE SPONSORS!

DINNER SPONSORS

- Krech, O'Brien, Mueller & Associates, Inc.
- Larkin Hoffman

CAT MODEL SPONSOR

- Rachel Contracting

WINE SPONSORS

- American Engineering Testing, Inc.
- Kraus-Anderson Construction Company

PROGRAM & PRINTING SPONSOR

- Kraus-Anderson Construction Company

DESSERT SPONSORS

- Arthur Chapman Kettering Smetak & Pikala, P.A.
- CliftonLarsonAllen
- Empirehouse, Inc.
- Meyer Contracting Inc.
- Stahl Construction Company
- Terracon

RECEPTION SPONSORS

- PlanGrid
- Thompson Tarasek Lee-O'Halloran
- Wells Concrete

SIGNAGE SPONSORS

- Adolfsen & Peterson Construction
- CES Imaging

PHOTOGRAPHY

- Terra General Contractors



CONTRACTOR OF THE YEAR



Doran Construction

SUB-CONTRACTOR OF THE YEAR



Rachel Contracting

SERVICE PROVIDER OF THE YEAR



Cobb, Strecker, Dunphy & Zimmermann

DESIGN PROFESSIONAL OF THE YEAR



Wenzel Engineering

MEMBER OF THE YEAR



Alana Sunness Griffith

AWARDS OF EXCELLENCE WINNERS



New Project Total Value Under \$15,000,000

Tashjian Bee Discovery and Pollinator Center
Loeffler Construction & Consulting



New Project Total Value Over \$15,000,000

Minnesota Masonic Heritage Center
Adolfson & Peterson Construction



Renovation, Expansion, Or Tenant Improvement Project

Springbrook Nature Center Improvements Project
EDS Builders, Inc.



Government Construction Project
Firemen's Park Curling Center and Schimelpfenig Park
Kraus-Anderson Construction Company



Green/Sustainable Project T3

Kraus-Anderson Construction Company



Subcontractor/ Specialty Contractor Project

University of Minnesota Microbiology Research Center
Empirehouse, Inc.



MCA Choice Award
Downtown East Mixed Use Development
Ryan Companies

Member to Member

The new Twin Cities Orthopedics Performance Center set to open in March 2018 is beginning to take shape above ground.

KRAUS-ANDERSON

CONSTRUCTION began erecting structural steel today and expects to celebrate the topping off of the headquarters building in February 2017. Steel erection on the indoor practice facility will follow and is scheduled to be complete at the end of March 2017. More than 19,700 labor hours are anticipated to complete the steel construction of the new buildings alone.

Since the August 2 groundbreaking, work has been moving forward on the site, with 10 Minnesota companies already spending time on the project. Several hundred thousand cubic yards of soil have been moved to balance the site and accommodate the realignment of Vikings Parkway, a new city street servicing the entire development. Retaining walls have been installed, and footings and foundations have been set. In addition, thousands of feet of underground utilities have been installed and the old Northwest Airlines simulator building has been demolished and removed from the site. More than 11,800 labor hours have been generated from work to date on the project.

The 40-acre Vikings campus, located off I-494 at the intersection of Dodd Road and Lone Oak Parkway, will include the following:

- New administrative offices for Vikings staff
- Outdoor stadium with an anticipated capacity of 6,000 (expandable)
- Five outdoor practice fields (including stadium field) - four grass, one synthetic

- Outdoor training areas, including a sand pit and inclined surfaces
- Indoor practice facility with a 100-yard synthetic surface field and full-clear height for kicking
- Team auditorium and player position meeting rooms
- Media center/press facilities
- Expanded locker room, weight room and equipment facilities
- Cardiovascular and specialized speed rooms
- Hydrotherapy room and post-workout recovery rooms

The facility is the first phase in an overall 200-acre planned development expected to include offices, retail, residential, hospitality and a conference center with the Vikings headquarters as a development anchor.

Twin City Orthopedics is also progressing on its new 88,000-square-foot, full-service orthopedics center on the Eagan Campus.

Kraus-Anderson anticipates the construction of Phase I to be completed in approximately 14 months. Construction of the remaining multi-phase, mixed-use development will depend on market analysis and occur in stages over the next 10-15 years. ♦

Titan Development & Investments (Titan) and Harbor Bay Real Estate Advisors (Harbor Bay) will begin construction before year end on the upscale Hilton in downtown Rochester. The location of the hotel is at the southeast corner of Broadway Avenue and Center Street.

The debt is provided by First National Bank of Omaha (lead bank) and Bremer Bank. Rochester's HGA Architects and Engineers designed the project and **KRAUS-ANDERSON** will be the

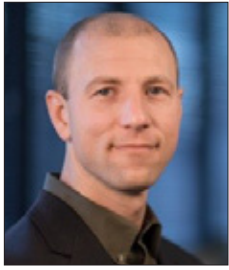
general contractor. Steve Kvenvold, City Administrator of Rochester, and Randy Staver, City Council President, along with their team were instrumental in supporting this project as well as the Destination Medical Center (DMC) staff.

The mixed-use tower is one of the first projects under the city's DMC initiative. This initiative is a public-private partnership to position Rochester, Minnesota, as the world's premier destination for health and wellness. DMC (www.dmc.mn) is the largest economic development initiative in Minnesota and one of the largest in the nation.

The hotel tower will connect to the downtown skyway system and will feature 264 rooms. In addition, it will contain ballrooms and conference rooms that are strategically designed to meet the growing business demands of Rochester. The hotel is expected to be one of the premier hotels in the Midwest and will be a tremendous asset to the Rochester community. Further, the commencement of construction on the hotel will allow the City of Rochester to begin a new, city-owned parking deck positioned adjacent to the hotel. "This upscale Hilton will meet the needs of a diverse demographic of travelers that are visiting Mayo Clinic or are here for business travel," said Gus Chafoulias, Rochester developer and visionary of the project.

"This transformational and iconic development will vastly enhance the unique offerings to visitors and locals in downtown Rochester and we couldn't be more excited to partner with Harbor Bay," said Andy Chafoulias, CEO of Titan. ♦

RJM CONSTRUCTION has hired JED FIELD as its Director, MEP Design and Coordination.



As part of RJM Construction's pre-construction services team, Field brings 17 years of engineering, facilities management and construction project management experience.

In this new role, Field will provide MEP expertise to the pre-construction team, develop design recommendations and cost estimates for MEP systems, and coordinate the sequencing of MEP trades and commissioning from project concept through facility operation.

"Jed has a well-rounded background as an engineer and project manager, making him a great fit for our team," stated Ted Beckman, RJM's vice president of pre-construction. "His experience working on both the

contractor and owner's side of the table will be a valuable asset to RJM and ultimately to our clients."

Field received a bachelor's degree in mechanical engineering from the University of St. Thomas. He is a registered Professional Engineer in the State of Minnesota, and has been designated a Certified Healthcare Constructor by the American Hospital Association. ♦

KRISTEN YATES, PE of AMERICAN ENGINEERING TESTING, INC.

(AET) has been promoted to Office Manager of the Rapid City, South Dakota regional office. She will continue as a geotechnical project manager but will

additionally be responsible for the Rapid City office including day to day



management and business development. "We look forward to Kristen taking on a larger role in the West Region," said AET West Region Manager Robert Temme. "I know she is ready and up for the challenge as she assumes greater responsibility and grows with AET."

Starting her career with AET, Yates joined the Rapid City construction services department while obtaining her Bachelor of Science in Geological Engineering from the South Dakota School of Mines and Technology. During her time in the department she was involved in field and lab testing of soils and concrete, once she graduated she moved into her field of study and became an engineering intern and later a geotechnical engineer for the Rapid City office.

A strong believer in learning from the ground up, Yates has experience in three of AET's service lines, from performing construction material testing to logging soil samples on the

Vertical construction projects that stand the test of time.

That's Trust *Delivered.*™

Since 1989, American Engineering Testing has partnered with firms throughout Minnesota to provide pre-planning, materials testing, special inspections and quality assurance/quality control for vertical construction projects.

Geotechnical | Construction Materials Testing | Pre-Condition Survey/Vibration Monitoring | Special Inspections



www.amengtest.com

drill rig to collecting environmental field samples, she has done it all. Citing the importance of understanding what the company offers, Yates comments “having first-hand experience in each of our service lines helps me relate to and understand each person in the office and provide unique insight to my clients on projects.”

As a leader, Yates does not shy away from challenges, instead preferring to face them head on. “My goal is for each member of my team, including myself, to strive to truly be a trusted partner to our clients and to earn the trust of new clients,” says Yates. “This means working hard and with purpose to solve problems in the field, improve our processes, and promote our exceptional services. I am excited for growth in the Rapid City office and look forward to leading this great team.”

Yates is a registered Professional Engineer in North and South Dakota and holds a Certified Petroleum Release Remediator (CPRR) certification in the State of South Dakota. She is an active member of the South Dakota Engineering Society and Youth in Science in Rapid City. She can be reached at kyates@amengtest.com. ♦



When it opened in 1970, Ebenezer Tower Apartments was a modern marvel: the first senior high-rise

building in Minneapolis. Now, following a top-to-toe remodeling, the building is new once again.

A Unique Housing Asset for Minneapolis

Located at 2523 Portland Ave. S. in the Midtown neighborhood in Minneapolis, Ebenezer Tower Apartments remains one of the city’s few affordable senior housing offerings. Aided by funding from the City of Minneapolis, Hennepin County and the Minnesota Housing Finance Agency, **KRAUS-ANDERSON (KA)**, the general contractor for the \$10.2 million project, recently completed a comprehensive renovation addressing safety, accessibility, function, aesthetics and comfort.

Performed as the building remained fully occupied, the project provided common area improvements, including a remodeled lobby, complete modernization to the two existing elevators, an addition of a second laundry room on the 20th floor and renovation of the 23rd floor community room, with its stunning views of downtown Minneapolis. Other improvements include upgraded electrical systems, new boilers and new water heaters. Sprinklers and a fire protection system were installed; and, for the first time, air conditioning in all the apartments.

Each of the 192 resident apartments was renovated in varying degrees, with updates including new cabinets and kitchen appliances, bathroom shower surrounds, toilet fixtures, vinyl and carpeting and electrical. Each apartment renovation was custom designed by Blumentals/Architecture Inc. Additionally, 10 units were converted to be ADA compliant.

Working in Someone Else’s Home

The priority throughout the project was minimizing disruption and maintaining comfort for residents, who range in age from 50 to 98, according to Ebenezer staff.

“One thing that we all took to heart was remembering that this was our residents’ home and they had to live through this 24 hours a day; staff were able to leave at the end of day,” said Joanie Lennick-Goulart, housing manager for Ebenezer Tower Apartments. “That was a mantra throughout the process.”

KA and Ebenezer worked together to coordinate and communicate the remodeling schedules to each affected resident.

“KA Project Manager Lyn Ringold developed an amazing color-coded spreadsheet schedule for the residents and the staff so we knew what was going on so we could communicate with the residents,” said Peggy Schulte, assistant housing manager for Ebenezer Towers. “Each day we would knock on doors and let residents know the schedule, face-to-face with a staff member.”

KA crews started two units a day, every day, and would spend three days in each unit. With four or five apartment units under construction at any given day, residents were required to be out of their apartment from 8 a.m. to 4 p.m., but were able to return and sleep in their own beds. The Ebenezer staff created a homey touchdown space in one of the larger ADA apartments for the comfort and convenience of displaced residents, stocked with a computer, TV, big comfy sofas, frozen meals, snacks, pet supplies, and crates for pets; plus survival kits with coupons, puzzles and pastimes.

Construction proceeded from the top floors down, scheduled to minimize disruption. The lobby was done in two phases – north and south. During the renovation of common spaces, the team worked creatively to keep other spaces open so that events could run as scheduled. Among the biggest challenges was the renovation of the two elevators that serve the building. Trying to minimize the inconvenience as much as possible, one elevator remained in service while the other was

being worked on for a period of three months, each elevator -- six months in all.

As contractor-in-residence through those months, the KA team formed a bond not only with Ebenezer, but with the residents.

“Everyone would refer to Jerry Rasmussen, KA’s superintendent as ‘My Jerry,’” said Lennick-Goulart. “He and Lyn added a personal touch that we didn’t realize we needed. It was a really important piece and I’m not sure how we could have done it without them. On one occasion, Jerry even brought in a family member to translate for a resident who speaks Vietnamese and very little English.”

The renovation has been warmly embraced by residents, staff and visitors.

“People who’ve not been here for a long time come in and say, this is a completely new building, we can’t believe it is the same space...everyone sits in the lobby. Our residents seem to be sitting taller, more proud,” said Lennick-Goulart. “Spaces that had been unused -- our fitness center, new media room and new library -- people are always there.”

The basement is a walkout access to the updated courtyard and is now handicap accessible with walking paths and beautiful landscaping. The spiritual center is now enclosed with a custom stained glass window -- a beautiful space for people to have quiet time, including prayers of remembrance services and Sunday services.

Schulte and Lennick-Goulart agree. “We feel extremely lucky to be able to work in this building.” ♦

KRAUS-ANDERSON

CONSTRUCTION COMPANY (KA) has promoted **STEVE MCKENDRY** to vice president of field operations. He has served as director of field operations since 2015, working with the KA’s general superintendents and other senior leaders to improve the efficiency and effectiveness of our field operations.



Prior to joining KA, McKendry was the senior regional preconstruction manager for Minneapolis-based Target Corporation, where he coordinated preconstruction activities on \$2.5 billion in project estimates, resulting in the funding of \$500 million in projects annually. Prior to Target, he was managing partner for Crown Construction Entities in Denver. He received his B.S. in Construction Management and Real Estate Finance from the University of Denver.

KA has also hired Cyril (CJ) Monse as project manager, Joe Yerbich as superintendent and Jeremi Hoff as union superintendent.



CJ MONSE, LEED AP, previously served as project manager for PCL Construction Services, Inc. of Burnsville, Minn. He received his B.S. in Construction Management from Minnesota State University, Moorhead, Minn.



JOE YERBICH was a senior construction superintendent for 17 years for Bossardt Corporation in Minneapolis, where he managed numerous projects in the education sector.



JEREMI HOFF had been with Knutson Construction since 1999, most recently as a foreman carpenter, where he coordinated jobsite crews

and subcontractors, safety guidelines conditions and building materials. ♦

GALLINA LLP, nationally recognized by Accounting Today and ranked among the top 10 firms in the Western United States, joined national professional services firm **CLIFTONLARSONALLEN LLP (CLA)**, effective January 1, 2017.

“By joining CLA, we have an ability to better serve our clients by bringing them a greater depth of service offerings through more robust resources,” says GALLINA Managing Partner Larry Taylor. He continues, “This will also provide exceptional growth and expanded career opportunities for our team members in tax, audit, and consulting.”

For nearly 45 years, GALLINA has served organizations both large and small. Under the terms of the agreement, GALLINA will assume the CLA name, and Larry Taylor, managing partner of GALLINA, will actively serve on the CLA leadership team as chief practice officer. GALLINA plans to continue its Sacramento region office move of its Rancho Cordova office, located at 2870 Gold Tailings Court, to GALLINA’s Roseville office at 925 Highland Pointe Drive.

“I am confident the clients we serve will value the expanded seamless integrated capabilities our combined firms offer,” says GALLINA regional managing partner Teresa Arrighi, who has joined CLA’s construction and real estate executive team.

As one of the nation’s leading professional services firms, CLA has retained the agility to serve clients of all sizes and locations, while at the same time bringing an unparalleled depth of capabilities, all in one place.

“Now as one professional services firm, our clients — contractors in particular — will experience a comprehensive and robust platform able to meet all of their needs,” says CLA incoming managing principal of construction and real estate Jill Bosco.

GALLINA and CLA will double their expertise in the construction and real estate arena, and strengthen capabilities in agribusiness, manufacturing and distribution, and the many other industries that make up the private sector.

“CLA completely aligns with the long history of high valued service that GALLINA has brought to its clients over its long history. Bringing the firms together will provide the additional services we did not previously offer internally,” says GALLINA Executive Team Partner Reed Matthews.

Clients want to be confident that when they need help — personally or professionally, today or in the future — CLA will bring relevant capabilities. To answer that need, CLA builds its diverse team to deliver an ever-broadening spectrum of wealth advisory, outsourcing, and public accounting capabilities.

“There is tremendous synergy between the GALLINA and CLA teams,” says CLA Chief Executive Officer Denny Schleper. “Together, we remain committed to serving privately held businesses and their owners with deep industry knowledge, striving to offer integrated capabilities that exceed our clients’ expectations. When we do this, we deliver on our CLA Promise — and, as our clients’ needs move and change, our team is right beside them, helping at every step.”

GALLINA’s team of 300+ will continue to serve clients locally and nationally from their locations in California, Nevada, Utah, and Washington. ♦

RJM CONSTRUCTION has contributed to an arts program in partnership with MPS Arts and South High School. Co-Mission engages students in the process of creating a commissioned piece of artwork.

“Our first partnership began with Norwest Equity Partners (NEP) in the fall of 2014. We were very excited to add RJM as a new Co-Mission partner this



year,” stated Nora Schull, Arts District Program Facilitator with Minneapolis Public Schools.

Students from South High School learned the professional practices required of a commissioned artist such as planning, studio techniques, and project completion. Local artist Wing Young Huie worked with the students and teacher as a mentor during this project.

The assignment was to photograph construction workers on a job site and translate their transformation of that landscape into interpretative photographs. Artist Huie showed students his process of interacting with thousands of strangers to close the widening gap between perception and reality.

On January 24, the students visited RJM’s office to view the installation of their work and reflect upon their experience.

South High School art teacher Corbin Doty appreciated the vote of confidence the project gave his students. “Something I strive for in my lessons is furthering the sense of trust and community that students experience. This partnership between my student photographers and RJM, under the guidance of Wing Young Huie, got us closer to that goal. Adults had taken a vote of confidence in the abilities of my class.”

This enthusiasm gives a sense that RJM’s investment will have an impact

on the students, teacher, and art classroom for years to come. ♦



RJM CONSTRUCTION has been selected by Allina Health to complete the interior construction of its new clinic in Buffalo. Last October, RJM began construction of the new 15,200 sq.-ft. medical office building the Allina Health clinic will occupy.

Under development by MedCraft, a national healthcare real estate developer, the single-story building is located at 755 Crossroads Campus Drive in Buffalo. The project site, located near the Buffalo Hospital, had been targeted for development for several years.

“We are excited to be part of this project and contribute to achieving Allina Health’s vision for expanded services in the Buffalo community,” stated Chris Lambrecht, MedCraft senior vice president, construction and development.

When complete, exterior features will include a combination of brick and stucco with glass curtain wall and metal panels accenting the patient entrance.

Allina Health is opening an additional clinic in Buffalo. The new clinic will provide a healing environment to serve the primary care needs of all Wright county residents.

In addition to RJM Construction and MedCraft, the project team includes architect BWBR, civil engineer Loucks and structural engineer Ericksen Roed & Associates. ♦

KRAUS-ANDERSON CONSTRUCTION COMPANY (KA) has promoted **DAVE LENSS** to the new position of vice president of pre-construction services, one of the company’s top executive positions. Lenss joined KA in 2012 as vice

president of project management and has played a significant role in growing KA's North Dakota office.

Al Gerhardt, COO of Kraus-Anderson Construction, says the new position is a strategic effort to keep pace with changing market conditions and client expectations in this area.



“Dave’s extensive knowledge of the pre-construction process and focused leadership skills uniquely position him for this new role,”

said Gerhardt. “We are excited to have Dave lead this team as we strive to provide true pre-construction value to our clients, while retaining our proven single-point-of contact model and differentiating KA from our competition.”

Lenss is a 35-year industry veteran in business development and operations. Prior to joining KA, he was the president of Graham Construction Services, Inc., a general contractor based in Eagan, Minn. He also served as president of Winnipeg-based general contractor Penn-Co Construction.

Some of Lenss’ recent notable projects include the new 262,000-square-foot Rough Rider Center and 163,000-square-foot high school in Watford City, N.D.; and multiple projects for the University of Minnesota, including the Itasca Biological Station in Itasca State Park, Park Rapids, Minn.; Gore Annex Amundson Hall addition in Minneapolis, and Bee and Pollinator Lab in St. Paul.

Lenss received his B.S. degree in Industrial Technology and Construction Management from the University of Wisconsin-Stout. He is a member of the Associated General Contractors of Minnesota, where he served as board chair and co-chair of its Legislative Committee. He is also a

member of the North Dakota Chamber of Commerce. ♦

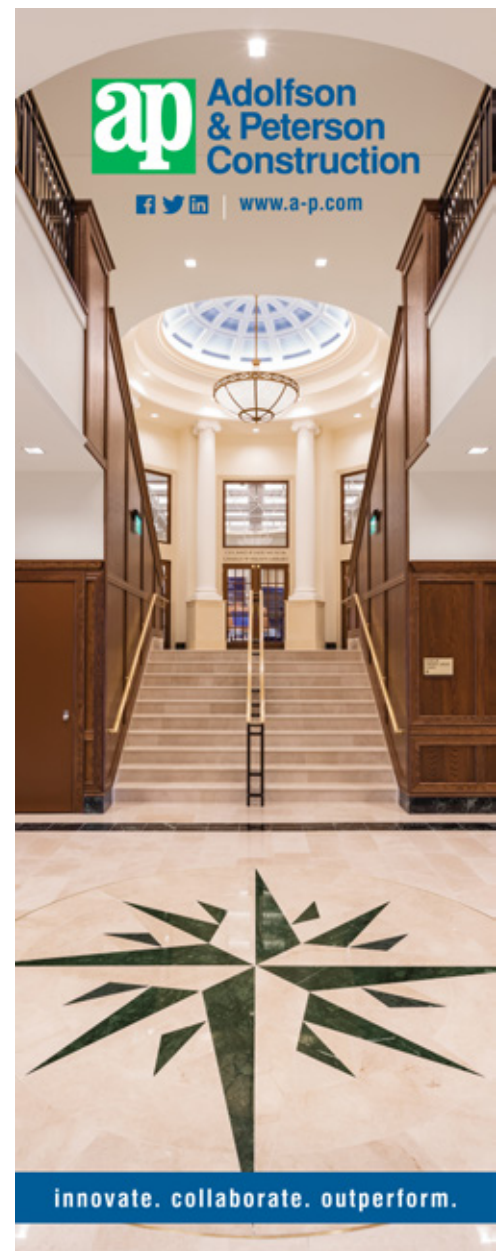
NORTHERN TECHNOLOGIES, LLC (NTI) is thrilled to announce the expansion of our nondestructive testing (NDT) and inspection services through the acquisition of assets and key personnel of Midwest Industrial X-Ray. This expands our offering of professional nondestructive testing services that can be conducted at the jobsite or in our laboratory. Our NDT services include radiography, X-ray, ultrasonic thickness, shear wave & C-scan corrosion mapping, magnetic particle, liquid penetrant, certified welding inspections, welding qualifications, quality assurance, concrete inspections, and ASNT Level III services.

Our NDT key personnel include Troy Fink as general manager, Missy Loween as radiation safety officer, Bryan McKown as ANST Level III technician, and Brent Thorsness, Erik Kroke and Dan Marsolek as Level II technicians. Our professionals are certified under the written practices of ASNT (American Society of Non-Destructive Testing) and provide NDT and inspection services in all aspects of the oil and gas industries, transmission, refining, storage facilities, and oil related support industries as well as inspection services to the chemical, manufacturing, food processing, building / structural, agriculture, machining and power industries. ♦



Manager/Senior Environmental Project Manager. He joins the West Region team in leading the office and providing services across North and South Dakota, Montana, and Wyoming. “Todd is a great addition to our team,”

AMERICAN ENGINEERING TESTING, INC. (AET) recently welcomed **TODD ORDAHL, PG** as our Sheridan, Wyoming Office



said West Region Environmental Manager Roger Hodson. “With his environmental experience and client-focused approach, Todd will help us expand and take care of our trusted partners.”

Mr. Ordahl will be responsible for providing senior environmental engineering services and project management in the region, as well as expanding AET’s services to their new Sheridan office. “I really hope to work further within the communities to not only build our presence, but make a positive impact on those communities we serve,” comments Ordahl.

Guided by an interest in earth sciences, Ordahl earned his bachelor's degree in Biology from the University of South Dakota and then a second degree in Geological Engineering from the School of Mines and Technology in Rapid City, South Dakota and got to work. He started his career working in the field getting hands on experience as an environmental technician and drill rig geologist and then moved into water treatment systems engineering and compliance, environmental project management, and field services management. Ordahl most recently worked with a local firm in Wyoming providing Wyoming Pollutant Discharge Elimination System (WYPDES) permitting, monitoring, reporting, and developing and managed spill response programs, baseline water quality monitoring, due diligence projects, hydrocarbon assessments, and stormwater (SWPP) inspections. His past positions have given him years of experiences interacting with regulatory agencies including the Environmental Protection Agency (EPA), South Dakota Department of Environment and Natural Resources, North Dakota Department of Health, Wyoming Department of Environmental Quality, Wyoming Oil and Gas Conservation Commission, and Colorado Oil and Gas Conservation Commission.

Ordahl brings many skills to the AET team, including project and team management and a focus on details that he has honed in his almost 30 years of experience as an environmental professional. He credits his drive and management style to many of the mentors he has had over the years, including those who have started their own companies. "Perseverance is the key to anything that you do," says Ordahl. "Whether it is facing a tough problem for a client or overcoming a communication challenge, working through it sets you apart and makes sure that you provide your clients with the best solutions."

Ordahl is a registered Professional Geologist in Wyoming and Nebraska. He also holds a Class A Industrial Wastewater Operator license from the state of Colorado, a Stormwater Management for Oil and Gas Operations Certificate, and is a certified SWPPP Administrator. Ordahl can be reached via email at tordahl@amengtest.com. ♦



AMERICAN ENGINEERING TESTING, INC. (AET) announced today the addition of **MATTHEW RUBLE, PE** as Vice President

and Principal Engineer. Ruble will be responsible for geotechnical and pavement engineering, construction services, project management and consulting as he joins the AET senior leadership team. "Matthew's business acumen and commitment to clients is a natural fit for the AET team," said President David Rettner, PE. "We look forward to his insight as we continue to grow our client services."

Ruble has a record of providing quality solutions for his clients since he began his career. In his years as an engineer and project manager, Ruble has lead a variety of projects including inspections for private and public buildings and project management of transportation projects including; roadways, bridges, and light rail lines. His experience includes projects at the University of Minnesota, Minneapolis/St. Paul International Airport, and the Mill Quarter district with the Guthrie Theatre, MacPhail Center, and Mill City Museum. "I am strongly motivated and energized by helping and seeing the clients I work with succeed," adds Ruble. "I strive to listen to my clients and build solutions around their specific needs as no one project is the same."

Ruble holds a Bachelor of Civil Engineering degree and citing his

desire for furthering his understanding of business development, earned his MBA in Consulting and Strategic Management from the University of Minnesota. He has successfully merged both his education and project management skills to become an effective business developer and company leader. Ruble credits his leadership philosophy with much of his success, focusing on the strengths of each individual member and creating a complimenting team. "I consistently drive to build a team for projects that consists of skills that complement each other and collaborates to help our clients succeed," comments Ruble.

Alongside his extensive work history, Ruble is a strong believer in the importance of professional development and networking. In the past, he has served as a board member of the Construction Management Department at the University of Minnesota. Currently, Ruble is an active member of the American Society of Civil Engineering, the Minnesota Surveyors and Engineers Society and the American Council of Engineering Companies. Ruble can be reached at 651.659.1314 or mruble@amengtest.com. ♦

NORTHERN TECHNOLOGIES, LLC (NTI) is pleased to announce



the appointment of **BARRY MORGAN, P.E.** as our next president. Morgan will be based at NTI's Inver Grove Heights office, with responsibility for

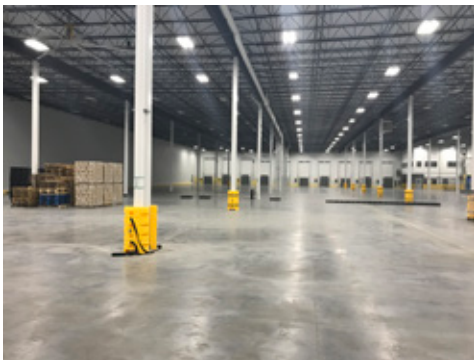
the firm's operations across Minnesota, North Dakota and South Dakota.

"We are very excited to have Barry joining the NTI team as our company grows into a stronger, more capable firm," stated Will Lindenmayer, Chairman of the Board. "Barry knows the engineering and testing business intimately and brings a

deep commitment to enhance NTI's impressive roadmap. Under his leadership, NTI will continue to evolve as a best-in-class company and market leader focused on quality, value added engineering design, exemplary customer service, professional ethics and innovation."

Morgan has over 20 years of experience in the engineering and construction industry across the upper Midwest. The first half of his career, he practiced as a geotechnical and civil engineer and, most recently, managed commercial construction projects for the largest builder in the Twin Cities.

"I'm excited to be working with the team at NTI and focus on continuing the growth of our organization. I believe our best strength is the staff we have and how we approach engineering by focusing on what makes our customers successful," expressed Morgan. ♦



KRAUS-ANDERSON CONSTRUCTION COMPANY (KA) has completed a major warehouse addition for Dahlheimer Beverage, located at 3360 Chelsea Road West in Monticello, Minn. The 97,250-square-foot expansion nearly doubles the size of Dahlheimer's warehouse.

The expansion of the beer distributor's existing warehouse and office space was designed by HDA Architects. Chesterfield, Mo.-based Gabriel Project Management is the owner's representative.

The new addition was performed while the distributor was in full operation.



Construction was completed in a tight schedule of only 22 weeks and included the installation of approximately 32,000 square feet of in-floor heating systems in the truck wash bays and truck drive-thru bay. ♦

The Bemidji office of **KRAUS-ANDERSON (KA)** has completed construction of the \$4.9 million Palubicki's Family Market and Spirits located on U.S. Highway 2 in Fosston, Minn.

Designed by RSP Architects, the 43,342-square-foot grocery store includes a new bakery, deli and catering, meat, seafood and produce departments, and a take-and-bake pizza shop. It also features a pharmacy, Caribou Coffee shop, and a bistro with beer on tap. The store is open. ♦



RJM CONSTRUCTION is busy at work converting the former Macy's store in downtown St. Paul into the recently named Treasure Island Center.

Plans for the 540,000-square-foot building at 363 Wabasha St. include a mix of new office and retail tenants, topped off by an 1,100-seat hockey practice facility.

The rooftop NHL-sized ice rink, named The TRIA Rink, is the most distinctive feature of the building. Earlier this

week, crews placed a 100,000-pound crane atop the roof to hoist structural steel, mechanical equipment and other supplies.

"This isn't your typical construction project, but we're up for the challenge and excited to be part of the team," stated Joe Maddy, chief operating officer.

In addition to the core and shell renovations, RJM will lead tenant build-outs as well.

Those projects include space for the Minnesota Wild and Minnesota Housing Finance Agency. RJM will also build out a 6,000 square-foot orthopedic clinic for TRIA Orthopaedic Center on the street level of the building.

"A project of this complexity requires a contractor with extensive experience. The scope includes 800 stalls of parking, a rooftop rink, office, medical and retail space along with a separate building component for a to-be-named national drug store," stated Randy

McKay, developer with Hempel Cos. "We are very pleased with the progress RJM Construction has made thus far."

♦

**KRAUS-ANDERSON
CONSTRUCTION COMPANY (KA)**



has hired Scott Casanova as senior project manager; Marcelo Lamoza and Dale Sonnechsen as project managers; and Mark Preston

and Tyler Sarff as superintendents.

SCOTT CASANOVA, LEED AP, has held senior level positions in the construction industry for nearly 25 years. Most recently, he served as senior vice president for Bloomington, Minn.-based Doran Construction. He also was a senior project manager for Pipestone, Minn.-based Carstensen Contracting, Ryan Companies and Weis Builders. He received his B.S. in Industrial Technology from the University of Wisconsin – Stout, and an Energy Engineering Technology degree from Red Wing Energy Technology Center.

Prior to joining KA, industry veteran **MARCELO LAMOZA** served as



project manager for Allied Builders System and senior project manager for StarCom Builders, Inc. in Honolulu, where he managed

projects primarily in retail and education. He also was the project manager at Sea Life Park Hawaii. Lamoza received his B.S. Construction Engineering degree from Pontificia Universidad Católica de Chile.

DALE SONNECHSEN was a project manager for more than 20 years with Minneapolis-based Stahl Construction where he focused on private and public projects,



working with developers, private institutions and government agencies. He received his B.S. in Construction Management from California Polytechnic State University, San Luis Obispo, Calif.

A 37-year industry veteran, **MARK PRESTON** comes to KA after serving as director of construction for Sacred



Heart Hospital in Eau Claire, Wis. He was also a superintendent for Mortenson Construction, where he managed projects for

hospitals, schools and office buildings. Preston received his B.S. in Industrial Technology from the University of Wisconsin – Stout.

TYLER SARFF previously served as Midwest regional manager for Envirotech Services, Inc. in Randolph,

Building Enduring Relationships and Strong Communities

Follow our construction process at www.krausanderson.com/blog or by web cam at bit.ly/kablockmpls





Minn., where he directed the company's trucking fleet and plants in the Midwest. He also was a project superintendent

for Adolfsen & Peterson Construction in Aurora, Colo., where he managed projects in several industry sectors, including medical and education. Sarff received his B.S. in Construction Management from Colorado State University, Fort Collins, Colo.

Kraus-Anderson has also announced that **MATT JOHNSON**, senior project manager, and **PAUL CHARPENTIER**, project manager, have earned the designation of Certified Healthcare Constructor (CHC) by the American Hospital Association (AHA). The CHC is a national credential that distinguishes an individual as being among the elite in the healthcare construction.



The company also has hired **AL ANDERSON** as project engineer, and **DUSTIN WICK** and **SCOTT MCLEAN** as assistant project managers. All employees work in KA's Minneapolis office. ♦



RJM CONSTRUCTION has been selected by Bremer Bank to build a 25,000-sq. ft. addition to their service center in Lake Elmo.

Located at 8555 Eagle Point Boulevard, the project will blend seamlessly into the existing building, which was built in 2002.

“When we built the service center, we planned for this expansion project,” stated Josh Meyer, facilities manager with Bremer. “It’s an exciting time for Bremer Bank as the business grows; we’ll soon have capacity for another 200 employees.”

Construction is scheduled to begin in April, with the addition complete by the end of the year.

Carter Vargo, RJM vice president, will lead the project. “We’re accustomed to working alongside occupied spaces and have a plan in place to minimize disruption to Bremer’s support team.”

In addition to RJM, the project team includes Pope Architects, Frauenshuh Commercial Real Estate, and Dunham Engineering. ♦

NORTHERN TECHNOLOGIES, LLC (NTI) was recently selected by the State of Minnesota, Department of Admin

- Materials Management Division, to provide soil borings; collect soil samples during drilling activities; collect ground water samples during drilling operations; install monitoring wells, recovery wells, air sparge wells, vapor extraction wells, de-watering wells, injection wells, water supply wells, soil gas monitoring probes and gas vents, laser induced fluorescence (LIF) borings and electro conductivity (EC) borings; seal wells and borings and video logging wells on an as needed basis. This Contract is available to all State agencies and Cooperative Purchasing Venture members.

NTI’s Regional Manager Ryan Benson, PE states, “We have enjoyed working with the Department of Administration and the various State agencies in Minnesota and look forward to continuing to provide outstanding services to them as part of this contract.” ♦

Would you like to see your name or your company’s name in the Member To Member section of Construction Views?

If so, please send all company press releases, announcements and updates to Corinna Hastings, Executive Director and Editor, at info@mnconstruction.org



Do You Know How You Measure Up Against The Competition?

The 2016 CLA Construction Benchmark Report provides strategic insights.

Contractors who recognize and understand industry trends are better positioned to create opportunities in the future.

The 2016 CLA Construction Benchmark Report summarizes data from more than 300 construction companies throughout the United States. Drawing on their financial information, this report identifies some of the catalysts currently at work in the industry.

You can use this report to find answers to many of the financial and operational questions on your mind, such as:

- How can small companies be more profitable than larger ones?
- How do your competitors continue to grow when your company has leveled off?
- What does your debt-to- equity ratio suggest about your business?

For a detailed analysis and comparison of your company's results to the benchmark, submit your information to:

Darrel Mullenbach, Principal, Construction and Real Estate
Darrel.Mullenbach@CLAAconnect.com or 612-376-4652

Mike Prigge, Principal, Construction and Real Estate
Mike.Prigge@CLAAconnect.com or 612-376-4806

Download The 2016 CLA Construction Benchmark Report at CLAAconnect.com/construction



WEALTH ADVISORY | OUTSOURCING | AUDIT, TAX, AND CONSULTING

Investment advisory services are offered through CliftonLarsonAllen Wealth Advisors, LLC, an SEC-registered investment advisor.

27-0719 | ©2017 CliftonLarsonAllen LLP



**WE CAN'T
THANK YOU
ENOUGH!**

**We thank the following
Platinum Sponsor
(\$1,000 level) for their support:**



COMMERCIAL

**We thank the following
Silver Sponsors
(\$250 level) for their support:**

[AVR Inc. & Affiliates](#)

[Redfin Real Estate](#)

MCA

4248 Park Glen Road
Minneapolis, MN 55416
(952) 928-4646 • fax (952) 929-1318
www.mnconstruction.org
info@mnconstruction.org

Corinna Hastings, CAE
Executive Director and Editor

MCA is a non-profit association dedicated to educating and promoting the construction industry. Statements of fact and opinion in this publication are the responsibility of the authors alone and do not necessarily reflect or imply the opinion of the members, directors or staff of MCA.