

CONSTRUCTION VIEWS

Education | Recognition | Networking

CONTENTS

- 2 | Calendar of Events
- 2 | President's Column
 - 3 | New Members
- 3 | Board of Directors
 - 4 | MCA Appoints 2015-16 Student Representatives
- 5 | Seventh Annual MCA Scholarship Golf Tournament a Success
- 6 | Many Thanks to the 2015 Golf Tournament Sponsors
- 7 | What's New with the 2016 MCA Awards Gala?
- 8 | Member to Member
 - 17 | Sponsors

SAVE THE DATE

Breakfast Networking at the RJM Construction Office

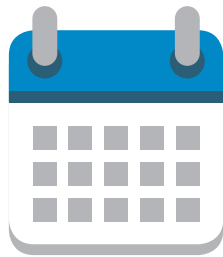
Thursday, July 23

Boat Cruise on Lake Minnetonka

Thursday, August 6

MCA Second Annual Soiree: A Gathering of Construction Professionals

Thursday, November 5



Don't miss these opportunities to mix and mingle with fellow construction industry professionals!

Watch your email for additional details and registration information.

CALENDAR OF EVENTS

Monday, July 20, 2015

MCA Board Meeting

Thursday, July 23, 2015

Breakfast Networking

Thursday, August 6, 2015

Boat Cruise on Lake Minnetonka

Monday, August 17, 2015

MCA Board Meeting

Monday, September 21, 2015

MCA Board Meeting

Monday, October 19, 2015

MCA Board Meeting

Thursday, November 5, 2015

Second Annual Soiree

Monday, November 16, 2015

MCA Board Meeting

Monday, December 14, 2015

MCA Board Meeting

Wednesday, January 27, 2016

Awards of Excellence Dinner & Gala

Wednesday, June 8, 2016

Annual Scholarship Golf Tournament

Visit www.mnconstruction.org for more information and to register today!



PRESIDENT'S COLUMN

CHAD RETTKE

Construction season is now in full swing, and companies and employees are busier than ever. Planning is done and the building is going. We are already planning on what we can get done

this season as we are in the grind of building. I have taken some time to reflect on the past several months where the cold of winter slows our progress. Make sure that you take time to also enjoy the wonders of living and working in a great area in the Midwest. Take time to recharge and reenergize yourself.

At the MCA, we have been very busy since the last newsletter. On April 24th we hosted our 2nd annual Half Day Seminar on Leadership and Communication. Nearly 100 students and professionals learned valuable information on those "Soft Skills" that are so valuable in our business world. This is a growing event, and we are already planning for our 3rd Annual event. We also followed up this event with a tour of the Wells Fargo Towers in Downtown Minneapolis currently under construction by Ryan Companies. This is a very interesting project, and thanks again to Ryan Companies for hosting our group. Also on June 3rd we hosted our annual Golf Scholarship Fundraiser. It took place again this year at Deer Run in Victoria. Despite the intermittent rain showers, it was a huge success, and we look forward to using profits for scholarships and student related education and outreach. We have already booked Deer Run again for next year, so mark your calendar now for June 8, 2016.

Besides these great events, the MCA Board has also been busy with growing our student outreach committee and plans have begun to work with our College partners as they will be hosting the Associated Schools of Construction (ASC) Convention in 2018. There is a lot of planning and coordination that will need to take place over the next three years to make this successful; more to follow on this effort.

The MCA Board has also been busy reviewing and updating our Strategic Plan, making sure that our efforts to build our organization are heading in the right direction. If there are any interests that you have in volunteering, please email our office at info@mnconstruction.org. We are also scheduling some great upcoming events yet this summer, so check out the MCA website at www.mnconstruction.org for more information.

Our MCA Twitter account is up and running. We are tweeting great information on our events, and retweeting some great information on our industry and what our members are doing. If you or your company are on twitter, please reach out to us at [@MCAConstruction](https://twitter.com/MCAConstruction) to follow. Our Communication Committee has also been busy planning on updates to our website and the content. Look for updates soon. Again, if you are interested in helping with our Social Media or Website, please contact us, as we are looking for help.

I wish you the best in these summer months, and don't let them slip away with just work. Get out and enjoy a Twins or Saints game, or just enjoy some time outdoors.



Education. Recognition. Networking.

PLEASE HELP MCA

WELCOME

**OUR NEWEST
STUDENT MEMBERS:**

Minnesota State University, Mankato
Ahmed Alsagoor

University of Minnesota
Luke Giguere
Brandon Gray
Lynn Patzner

University of Wisconsin - Stout
Edward Gajdosik

South Dakota State University
Nicholas Swisher

MCA 2015 BOARD OF DIRECTORS

PRESIDENT

Chad Rettke
Kraus-Anderson
Construction Company

VICE PRESIDENT

Mark Becker
Fabyanske, Westra, Hart &
Thomson, PA

TREASURER

Darrel Mullenbach, CPA, CCIFP
CliftonLarsonAllen LLP

SECRETARY

Paul Almen
DeWitt Mackall Crouse &
Moore S.C.

PAST PRESIDENT

Gregg Johnson
Hammes Company

DIRECTORS

Mat Boie, LEED AP
WELLS CONCRETE

David Herzberg, LEED AP
Adolfson & Peterson Construction

Fred King
INSPEC, Inc.

Briena Kohout
Kellington Construction, Inc.

Mike Lisowski, P.E.
Krech, O'Brien, Mueller &
Associates, Inc.

Nick Reynolds
Rochon Corporation

Ryan Rydberg
Knutson Construction

Grant Tentis, CPA, MBT, CVA
Blanski Peter Kronlage &
Zoch, P.A.

STAFF

Corinna Hastings, CAE
Executive Director & Editor

MCA Appoints 2015-16 Student Representatives

The Minnesota Construction Association (MCA) appointed two Student Representatives to the Board. These positions will continue to strengthen the relationship that MCA has with institutions providing construction related degrees. The Student Representatives will participate in MCA Board meetings, serve as the representative for students at the institutions affiliated with MCA and contribute to the MCA Newsletter.



BRANDON GRAY
University of Minnesota

Hello, my name is Brandon Gray and I was recently appointed to a student representative position within the Minnesota Construction Association. I am honored to be selected and was very excited when I found out. I am from Faribault,

MN and grew up living on a lake. I enjoy boating, hunting, fishing, hockey and golf. I attended Faribault Senior High School and graduated in the top 5 percent of my grade. I am currently attending school at the University of Minnesota – Twin Cities and will be a junior this fall. I am majoring in Construction Management with a minor in business management. This summer I am interning as a project engineer for Loeffler Construction and Consulting in Lakeville, MN. My grandpa, father and uncle were all involved in the construction industry while I was growing up and still are. My father and uncle now own and operate Gray Companies, Inc. I was inspired to go into the construction industry because of these three role models and mentors. I intend to use my student representative position as a tool to help and provide resources for learning and networking for Construction Management students at the University of Minnesota.



LYNN PATZNER
University of Minnesota

Lynn Patzner currently works full-time as a project manager while attending the University of MN in the Construction Management certificate program. During a role with a previous employer, she took on opportunities to lead real estate

and construction projects, which brought forward her natural project management abilities and a fascination with the intricacies of construction projects. These experiences opened her eyes to a career path she had not explored during her undergraduate and graduate studies in Finance. Lynn recognizes the role networking has played in her career thus far and the role it will continue to play in moving down a new career path, which is her primary goal for serving on the MCA Board. She is aiming to grow her network as well as give back to others in the construction industry. Lynn has five years of project management experience with real estate, construction, and IT projects. Lynn has a bachelor's in Finance from the University of WI - La Crosse and holds an MBA degree from Capella University. She also has a Certified Associate Project Manager certificate from the Project Management Institute.

Seventh Annual MCA Scholarship Golf Tournament a Success



[VIEW THE
EVENT
PHOTOS!](#)

On Wednesday, June 3rd, MCA hosted its 7th Annual Scholarship Golf Event at Deer Run in Victoria, MN. The organization filled the course with 36 teams of construction industry professionals. The popularity and success of this event continues to hold strong, selling out two years in a row! Contributing to the success were the golfers, raffle item donors, event, hole and GPS sponsors. With their high spirits and rain gear the participants toughed it out in the wet weather with true can-do attitudes. Thankfully there was scrumptious food and impeccable, albeit soggy, greens.

Following the day of golf, prizes were awarded for skill on the course and pure luck in the raffle drawings. While not everyone who left the event at the end of the day may have had a prize in hand, they all went away winners. The best prize will be in the form of the scholarship recipients who benefit from the funds raised by this event.

Thank you so much to everyone involved!

Congratulations to the 2015 Scholarship Golf Winning Teams



1ST PLACE:

[Partial team photo due to inclement weather]
CJ Becker (Anchor Bank),
Brian Duren (CliftonLarsonAllen),
Greg Kupka (Wenzel Plymouth
Plumbing) and Darrel Mullenbach
(CliftonLarsonAllen)



6TH PLACE:

Jerry Asmus, Jeff Holmgren
(RAM Construction Services),
Braeden Kleven (KR Kline and
Associates) and
Rory Synstelien (HTPO)



12TH PLACE:

Mat Boie (Wells Concrete),
Steve Olson (Wells Concrete),
Jim Smith (Rochon Corporation)
and Nathan Thome
(Rochon Corporation)

MANY THANKS TO OUR 2015 GOLF TOURNAMENT SPONSORS FOR THEIR GENEROUS SUPPORT!

EVENT SPONSORS



PREMIUM HOLE SPONSORS

Atomic Recycling

Carciofini Company

CliftonLarsonAllen LLP

DeWitt Mackell, Crouse & Moore, S.C.

Empirehouse, Inc.

INSPEC, Inc.

Kellington Construction

KR Kline & Associates

Krech, O'Brien, Mueller & Associates, Inc

Maverick Cutting and Breaking

Northern Technologies, Inc

Sathre-Bergquist, Inc.

Terra General Contractors

Wells Concrete

HOLE SPONSORS

AdvantaClean of the Twin Cities

CES Imaging

Hansen Thorp Pellinen Olson, Inc. (HTPO)

Ruehl + Associates

SitesForBuilders.com

The Kenrich Group LLC

GPS GOLF CART SPONSORS

Anchor Bank NA

Gephart Electric

JE Dunn Construction

What's New with the 2016 MCA Awards Gala?

Legendary college football coach Joe Paterno used to say “If you’re not getting better, you’re getting worse”. This phrase is true and can be related to many different aspects of life. Would Apple or Microsoft be where they are today if they weren’t always looking at ways to find the next big thing in the never-ending quest for improvement?

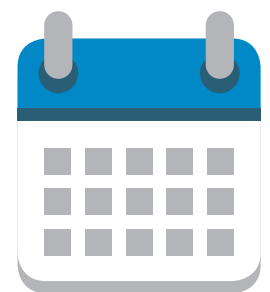
The Minnesota Construction Association (MCA) is dedicated to continual improvement as well. The 2015 golf tournament increased attendance and scholarship money once again this year. The afternoon of rain at the event couldn’t stop the large contingent of business professionals from having a great time while getting in 18 (or nearly 18 in some cases) holes of golf and a great steak dinner. Now that the golf tournament has passed, the focus shifts to other great MCA events. Another top annual event is the Awards of Excellence Gala.

How can the 2016 Awards Gala be better than the successful 2015 event? The answer is, of course, by looking at what works well and what doesn’t work. The awards committee is working diligently throughout the year to improve the event and provide a great source of recognition for MCA member companies and members that participate in the event. A new award category is being added this year in an effort to add more recognition to members. This new award is set aside for only subcontractors or specialty contractors. More details of this award will be forthcoming this fall.

The awards committee is also looking at ways to improve the interest in the Research/Innovation award. This award is designed to recognize companies that have developed a new technology/technique or are simply implementing new technology/techniques that are available to the construction industry. This is a great opportunity for members to gain recognition for being at the forefront of the industry.

All signs are pointing to a great year for the construction industry and the economy overall. Hopefully this will translate into more award nominees and a great Awards of Excellence Gala in January. If you have any suggestions on how to improve the Awards Gala or anything else with the MCA, please contact any of the board members, committee members or get involved by volunteering to join a committee yourself.

Dave Lyste (Rachel Contracting)



Mark Your Calendar!
Awards of Excellence
Dinner & Gala
January 27, 2016

Member to Member



A. PETER HILGER, faculty co-director and instructor for the University of Minnesota College of Continuing Education (CCE)'s Bachelor of Applied Science in Construction and Facility Management Program, has been named one of eight recipients of the 2015 Morse-Alumni Distinguished Teaching Award, the University's most prestigious award for excellence in undergraduate teaching.

He will be honored at the Distinguished Teaching Awards Ceremony, Wednesday, April 8, 2015, at 3:30 p.m., at the McNamara Alumni Center, 200 Oak Street SE, Minneapolis.

An architect by training, a builder by profession, and a teacher at heart, Hilger has been with CCE since 1997. His passion is teaching, mentorship, and strategic thinking. A popular teacher and program builder, he has been responsible for developing new initiatives in learning, fostering University collaboration, and cultivating strong industry partnerships, all of which benefit student success.

Says Michelle Koker, Director of Undergraduate Programs for CCE, "Peter is an exceptional promoter of multidisciplinary and intercollegiate synergies, creating innovative course and degree offerings using cutting-edge instructional technologies. His commitment to his students is clear, as is his goal of enabling them to open

doors of opportunity through their education and through association with the industries and communities in which they seek to establish their professional lives. He is the quintessential teacher/practitioner, sharing his expertise and mentoring aspiring construction and facility managers."

The Morse Award has been given annually since 1965, honoring top U of M educators for their outstanding contributions to undergraduate education. Morse honorees are also inducted into the Academy of Distinguished Teachers. As members of the Academy, these faculty members will provide important leadership to the University community by serving as mentors, advisers and spokespersons for the University's mission. ♦



RACHAEL OELKE, a project manager with **KRAUS-ANDERSON**, has earned the designation of Certified

Healthcare Constructor (CHC) by the American Hospital Association (AHA). The CHC is a national credential that distinguishes an individual as being among the elite in healthcare construction. Oelke is KA's sixth CHC designate. Others include Camille Helou, Mike Becchetti, James Ericson, Kyle Woody and Jim Hoff.

Oelke's 11-year career at Kraus-Anderson has involved her in numerous healthcare projects, including large hospital construction containing sensitive medical spaces that required a full slate of infection prevention procedures. She has served as project manager for the Regions Hospital mental health facility in St. Paul, as well as an assistant project manager for

the Regions Hospital 2009 expansion project and the University of Minnesota Masonic Children's Hospital.

Oelke, a LEED® accredited professional, received her B.S. in Interior Design and Construction Management from the Minnesota State University, Mankato. She is a member of the American Society for Healthcare Engineering, Association of Women Contractors, Associated General Contractors and U.S. Green Building Council, Minnesota Chapter. ♦



JOSH SCHULTZ has been promoted to Director of Marketing at Stahl Construction – a title commensurate with the work

he is already doing for the company. Josh joined Stahl in 2013 as the Marketing and Business Development Manager. Since joining Stahl he has reworked the marketing department, launched a new social media presence, brought numerous opportunities to the company, started a job-specific marketing strategy program, launched Stahl's new website and yes – even acquired a drone.



HA LAM has been with Stahl Construction since 2003. Her work is thorough and her domain expertise deep. Ha has been transitioning from

doing all Assistant Project Manager work to supporting that department while taking on Marketing and Operations tasks. She will continue on with that progression with her new title – Director of Operations. In her new role she will be leading the facilities

work, supporting Stahl's executives and managing several important operations projects.

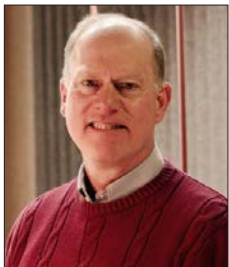


ALEX DUDEN has been promoted to Assistant Project Manager at Stahl Construction. Alex joined Stahl in 2014 as a Project Administrator.

Since then he has been working with Tekton Construction (Stahl's sister company) and with the Stahl team supporting the Assistant Project Managers. He has consistently demonstrated a desire to learn, take on more and provide value to the team.

Stahl Construction would also like to welcome the following new hires:

- **MIKE PALMER**,
CHC, Project Manager
- **TONY PALMER**,
LEED Green Associate,
Assistant Project Manager ♦



AMERICAN ENGINEERING TESTING, INC. (AET) is excited to announce that **GREGORY BECKSTROM**, CPSM is the new

environmental department manager in our St Paul, Minnesota office effective March 16, 2015. He is a 30 year career geoscience professional who has worked in oil & gas and environmental/engineering services, most recently as an area manager for Amec Foster Wheeler and a client relationship manager for Golder Associates.

Mr. Beckstrom has held a variety of positions that have revolved around the intersection of geoscience, business management, technical communications, leading teams, and managing clients. Key clients include Fortune 500 oil & gas, mining, manufacturing, energy, power, food, chemicals, rail, automotive, and waste

management companies. He has a geology degree from the University of Wisconsin - Eau Claire and a MBA from the University of St. Thomas.

Greg is active in several professional societies. He is a director and past-chair of the Society for Mining, Metallurgy, and Exploration (SME) Twin Cities Chapter and an active member of the Society of Petroleum Engineers (SPE), Air and Waste Management Association (AWMA), the Society for Marketing Professional Services (SMPS), and the City of Lakes Rotary Club. ###



KRAUS-ANDERSON CONSTRUCTION COMPANY (KA)

will begin a \$8.1 million expansion and renovation of the Myles Reif Performing Arts Center in Grand Rapids, Minn. A groundbreaking ceremony will be held at 10:00 a.m., Monday, April 6th at the arts center, located at 720 NW Conifer Dr., Grand Rapids.

Designed by Alliance of Minneapolis, the 45,000-square-foot regional arts center will include the addition of 60 seats in the main theater, a new 200-seat studio theater and an expanded lobby.

Since 1981, the Myles Reif Performing Arts Center has provided Minnesota's northland with a diverse range of world-class performances, including dance, music, theater and other forms of entertainment. The Reif Center also is also a popular facility for private events, concerts and conferences.

The project is estimated to be completed February 2016. ♦

RJM CONSTRUCTION, a Minneapolis-based general contractor, has been purchased by its founders, Bob Jossart and Joe Maddy, from



Have you thought about:

- How to control costs?
- If your costs for bidding and budgeting are right?
- How much your business is worth?
- What to do when you are thinking about retirement?

Many contractors have turned to us to help them run profitable businesses.

In addition to providing traditional CPA firm services, we help contractors focus on issues such as:

- Key performance indicators
- Project cost control
- Determining costs for bidding and budgeting
- Financial controls

Contact Grant Tentis, CPA, MBT, CVA today to discuss how we can assist you. Grant is a Shareholder and leader of our Construction Practice Group.

763.253.1171
gtentis@bpkz.com



Proud member and sponsor of MCA since 2007. Grant is active on the MCA Board and has finished his term as Vice President.

BLANSKI PETER KRONLAGE & ZOCH, P.A.

7500 Olson Memorial Highway, Suite 200

Golden Valley, MN 55427

www.bpkz.com

NorthMarq Companies, the real estate services holding company owned by the Pohlada family. The sale was announced today; terms were not disclosed.

RJM Construction was founded in 1997 by construction veterans Jossart and Maddy; the company was acquired by NorthMarq Companies (then known as Marquette Real Estate Group) in 2008 and today ranks among the top general contractors in the Twin Cities. This change will allow RJM Construction the opportunity to work more closely with other real estate brokerage, property management and development firms, in addition to continuing its relationship with Cushman & Wakefield | NorthMarq and United Properties, other entities owned by the Pohlada family.

“This brings us back to where we began, as an independent general contractor committed to serving our clients, and builds on our accomplishments during the past seven years under Pohlada ownership,” Jossart said. “Together, Joe and I founded the company and we are energized by the new opportunity this provides to us and to our people.”

No changes are anticipated at the three-city, 150-employee firm, and all current staffing plans remain unchanged. RJM Construction will continue to be led by Jossart as president, and Maddy as chief operating officer. RJM Construction reported revenues of \$214 million in 2014, with offices in Minneapolis, Denver and Phoenix. The firm provides pre-construction, general contracting, construction management and design/build services to clients across a wide swath of industries, from healthcare to municipal.

“Our priority continues to be providing outstanding construction services,” Maddy said. RJM Construction is currently building several high profile projects, including the headquarters for Be The Match® and Portland Tower, both in Minneapolis; ManCaves in Englewood, Colorado; and Hacienda HealthCare Children’s Hospital in Mesa, Arizona.

“RJM has been a solid partner with NorthMarq Companies, and we see a strong future for them as they return to being an independent operating business,” said Ed Padilla, CEO, NorthMarq Companies, which also owns commercial real estate entities Cushman & Wakefield | NorthMarq and NorthMarq Capital.

Padilla added that the Pohlada-owned commercial real estate entities will continue to build on a strong heritage in real estate services. “We are continuing to pursue geographic growth in our brokerage, real estate advisory, property/facilities management, commercial mortgage banking and loan servicing businesses,” he said. ♦

Bloomington, Minnesota-based, developer **DORAN COMPANIES** closed today on the purchase a 40 acre development site adjacent to The Shops at Arbor Lakes in Maple Grove. The Frances A. Seelen Trust was the seller of the land. Located on the North East corner of Hemlock Lane and Elm Creek Boulevard, the property was once farmed by multiple generations of the Seelen family.

Kelly Doran, owner and principal of Doran Companies said his company is eager to begin the development process but won’t be in any rush to get city approvals. “We don’t have any immediate plans, but I’m sure some of the focus will be on residential, and it could have other components as well. We’ll take our time, work with the city and get it done right.”

Brenda Tuttle, The Trustee of the Seelen family trust said the family was happy to see the land go to Doran. “Other developers have attempted to buy our property but unfortunately were unable to bring their developments to fruition. We are pleased that Doran Companies purchased the property and is cooperating with the City of Maple Grove to find the right uses for the land.”

The purchase price for the site was \$10,583,569. The price included Doran’s

assumption of \$3,583,569 of Special Assessments that were recently levied against the Property by the City of Maple Grove. The assumed Special Assessments are for lateral utility and street improvements adjacent to the Property, along with trunk storm sewer, trunk sanitary sewer and trunk transportation improvements that have been completed for the benefit of the property. ♦



KRAUS-ANDERSON CONSTRUCTION COMPANY (KA) has hired Jeff Salowitz as project manager.

Prior to joining KA, Salowitz was a senior field engineer for Ryan Companies US, Inc., where he managed multiple tenant improvement assignments. He also served as contract project manager for Target, where he oversaw numerous store projects, including the construction of the company’s flagship store in Canada. Salowitz was on the team that launched a Target initiative, making all of the company’s Canada stores LEED certified.

Salowitz received his B.S. degree from John Brown University, Siloam Springs, Ark. He also holds a certification in Wilderness Leadership and Ethics from Prairie Bible College in Three Hills, Alberta, Canada. ♦



KRAUS-ANDERSON CONSTRUCTION COMPANY (KA) has hired **TIM MAYER** as talent acquisition director. He will

be responsible for creating and leading the company’s end-to-end recruiting and hiring program.

Mayer will strategically implement a proactive strategy to attract top talent for KA’s immediate needs and build a pipeline for future needs as the

company grows. He will apply a big-picture approach to provide an excellent candidate experience, while recruiting managers, grooming company leaders and providing a seamless transition as long-time employees retire.

“In this ever-changing industry and marketplace, Tim brings to Kraus-Anderson a wealth of experience and professional relationships to strategically identify and recruit talented candidates that will help us continue to build a powerful workforce and bolster our continuous growth,” said Al Gerhardt, Kraus-Anderson’s COO. “These measures will continue to position Kraus-Anderson as a top employer with potential candidates.”

Mayer comes to Kraus-Anderson from Mortenson Construction, where he served as senior talent acquisition specialist. He was also a senior professional recruiter for Manpower Professional. He received a B.A. in History from Saint John’s University, Collegeville, Minn., and an M.A. in Human Resources and Industrial Relations from University of Minnesota’s Industrial Relations Center at the Carlson School of Management.



Kraus-Anderson also announced that it has hired **AARON ZABEL** as project manager and has promoted **BRIAN KOBOW** to project superintendent. In addition, **JESSICA MASTERSON**, a project manager, has earned the designation of Certified Healthcare Constructor (CHC) by the American Hospital Association



Kraus-Anderson also announced that it has hired **AARON ZABEL** as project manager and has promoted **BRIAN KOBOW** to project superintendent. In addition, **JESSICA MASTERSON**, a project manager, has earned the designation of Certified Healthcare Constructor (CHC) by the American Hospital Association



(AHA). They work in the company’s Minneapolis office. ♦



The Rochester office of **KRAUS-ANDERSON CONSTRUCTION COMPANY (KA)** has begun a multi-million dollar expansion of the Olmsted County Government Center at 151 Fourth Street SE in Rochester, Minn.

The Government Center building including the courts, which are part of Minnesota’s 3rd Judicial District, will remain fully operational throughout construction. Demolition will be done during evening hours. The Government Center’s business hours are 8:00 a.m. to 5:00 p.m. Monday – Friday.

Designed by Klein McCarthy Architects of St. Louis Park, Minn., the new seven-story addition will also include new stairs and elevators, meeting rooms and interior remodeling on each floor for department growth. The front side of the building will be renovated to make room for the new weapons screening area, which will be located on the second floor above the Information Center.

The 16,500-square-foot addition is expected to be completed in the spring of 2016. ♦

STAHL CONSTRUCTION has begun work on a major renovation for Wayzata Community Church following a successful “Raise the Roof” capital campaign. The eight-month, \$8.2-million occupied construction project addresses building restoration and repair, accessibility improvements to accommodate people of all physical abilities, and the repurposing of space to better suit expanded ministries.

Exterior work includes restoration of the nearly seventy-year-old steeple, the addition of a new main-entry porte cochere, and site improvements to improve parking and accessibility. New windows and mechanical upgrades will increase energy efficiency. The Chapel will be expanded to accommodate ministry needs, and the top-floor roof will be raised to increase ceiling heights and provide a more functional youth fellowship area.

Stahl Construction was engaged nearly eighteen months ago to work hand-in-hand with project architect Rafferty Rafferty Tollefson Lindeke Architects (RRTL) and advise on cost and schedule, site logistics, and the numerous challenges inherent with occupied construction.



Over the last twenty years Stahl Construction has partnered with Wayzata Community Church and RRTL on multiple projects. “We prioritize worship projects like this as a company because of the important role these facilities play in the community that congregates there,” said Stahl president Jessie Bingen, “We have a long shared history with Wayzata Community Church and are proud to be partnering with them to deliver a cost-effective, phased project that will expand their physical space and consequently their ministry while minimizing the challenges of occupied construction.” ♦

Four area school districts have received Student Learning Grants from **KRAUS-ANDERSON CONSTRUCTION**

COMPANY (KA). School districts from St. Peter Schools, Spring Lake Park Schools, Northeast Metro School District 916 and Stillwater Area Schools will each receive a \$1,000 grant which will support new and innovative learning opportunities.

“The Student Learning Grant program demonstrates Kraus-Anderson’s commitment to education,” said Paul Peterson, superintendent of St. Peter Schools. “This grant allows schools like ours to dedicate resources to innovative ideas and initiatives that have been discussed throughout the facilities project.”

KA is currently ranked 7th in the nation in the construction of K-12 education facilities by Building Design + Construction. In the past five years the company has managed the construction of 218 education projects totaling \$853 million. Some of the company’s recent projects include those for:

- Saint Peter School District, where KA has worked on a preconstruction and referendum planning since 2013, leading to the district’s successful referendum March 10. In addition, KA is construction manager for the district’s new high school facility to be completed in 2017.
- Spring Lake Park Schools, including a 7,316-square-foot addition/remodel to Northpoint Elementary School in Blaine, and a 14,282-square-foot addition/remodel to Park Terrace Elementary School in Fridley completed in 2013.
- Northeast Metro School District 916, including the 72,500-square-foot Karner Blue Education Center in Blaine completed in 2014.
- Stillwater Area Schools, including the 48,000-square-foot Early Childhood Family Center completed in 2012; and security upgrades at nine district schools in 2014.

“We are extremely proud of our long-standing relationship with the school district, and are committed to building strong communities through education,” said John Huenink, vice president of education for Kraus-Anderson. ♦

KRAUS-ANDERSON CONSTRUCTION COMPANY (KA) has been selected to build a Rihm Kenworth parts and service center in Bemidji, Minn. The new 30,000-square-foot facility will provide truck maintenance, warranty service, parts sales and support services for class 7 and 8 commercial trucks. Used trucks also will be stocked at the dealership.

Designed by Pope Architects, construction on the new parts and service center will begin this summer and is expected to be completed in January 2016.

Founded in 1932, Rihm Kenworth (www.kenworth.com) is a leading dealer of heavy and medium duty commercial trucks in the upper Midwest. The company also has sales and service centers in Superior, Wis. and in St. Paul, Albert Lea, Sauk Centre and Lake Elmo, Minn. ♦

The Rochester office of **KRAUS-ANDERSON CONSTRUCTION COMPANY (KA)** has begun construction on a new wellness center at Shorewood Senior Campus located at 2205 Second St. SW, Rochester, Minn.

Owned by Wedum Shorewood Senior Campus, the new 11,000-square-foot wellness center will include a swimming pool, hydrotherapy pool and fitness center.

Designed by Rochester-based The Urban Studio, the project is expected to be completed in the fall of 2015. ♦

DORAN CONSTRUCTION announced today the hiring of **PAUL KOLIAS** as Vice President and **TOM REHKAMP** as Director of Operations.

In his role, Kolias will lead pre-construction services, assist with



estimating, owner and subcontractor contract review, and oversee project administration. Kolias has 25 years of general contracting

experience and most recently worked with RJM Construction as a Project Executive and Watson Forsberg as Vice President and Senior Project Manager. Kolias earned his B.A.S. degree in Construction Management at the University of Minnesota where he currently serves on the University’s Construction Management Advisory Committee.



Rehkamp has more than 15 years experience in operations including ten years with Minneapolis-based Target Corporation as

a construction project manager. At Doran, Rehkamp’s responsibilities will include construction staff assignments; working with Doran IT staff to implement and maintain cutting edge technology for both internal and construction site operating and communication systems; supervising and coordinating job site safety and continuous improvement of company processes and procedures. A graduate of St. John’s University with a B.A. in Natural Sciences, Rehkamp also earned a M.B.A. in management at the University of St. Thomas and also served as a Captain in the United States Army Reserve. ♦



AMERICAN ENGINEERING TESTING, INC. (AET) would like to announce the addition of **RYAN MENTER, PE** as a Senior

Engineer to the Construction Services Department in our St. Paul, Minnesota

office. He is responsible for subsurface explorations, geotechnical evaluations, and construction materials testing projects.

Mr. Menter brings AET and our clients', ten years of career experience in geotechnical explorations, subsurface data collecting, geotechnical engineering evaluations, foundations, construction materials testing and special inspections, civil site design, storm water management, and general construction practices and procedures. Key projects Mr. Menter has worked on include; the Mall of America Expansion, TAG Covington Apartments, Pier B Resort & Hotel, the Roseau Flood Diversion, and the MnDOT Dresbach Bridge (La Crescent/La Crosse). Prior to joining AET, Mr. Menter was a Project Engineer with Northern Technologies, Inc. (NTI). He holds a degree in Civil Engineering from the University of Wisconsin, Platteville, is a certified Professional Engineer in Minnesota, and a member of The Minnesota Geotechnical Society. ♦



AMERICAN ENGINEERING TESTING, INC. (AET) hired **WALTER SLACK, PE** as a principal engineer and manager of the Williston,

North Dakota office. He is responsible for managing the operations of the Williston regional office as well as providing specialized consulting, geotechnical evaluations, and design for horizontal and vertical development projects.

Mr. Slack's 30 years of career experience include geotechnical, environmental, water resource, and mining engineering. These activities include geotechnical explorations, subsurface data collecting, geotechnical engineering evaluations, foundations, civil site design, storm

water management, Brownfield/Superfund site cleanup, and water resources analyses and flood studies. He is well regarded for his extensive knowledge of landfill/waste treatment site design, dam design, and roadway improvements. Key projects Mr. Slack has led include; the Rogers Dam in Lovelock, Nevada; the Humboldt Dam, Lovelock, Nevada; extensive project work with Indian Health Services (IHS) in North and South Dakota; Eagle Butte Landfill; and improvements to ND Hwy 85.

Prior to joining AET, Mr. Slack owned and managed Walter Slack Engineering. He earned his bachelors and masters of degrees in Civil Engineering from Brigham Young University. He is a licensed engineer in North Dakota, Montana, Nevada, and California. Mr. Slack is an active member of the Society of Petroleum Engineers and the Williston Chamber of Commerce. ♦



AMERICAN ENGINEERING TESTING, INC. (AET) would like to announce the return of **MEGAN HOPPE, PE** as a Senior

Geotechnical Engineer to the Geotechnical Services Division. She is responsible for coordinating subsurface exploration and pavement testing, performing geotechnical and pavement engineering analyses, and providing geotechnical project management. Though living and working from her home-office in Brainerd, Minnesota,

Mrs. Hoppe is delivering exceptional service to AET's St. Paul and Central Minnesota clients.

Megan Hoppe brings AET and our clients over 20 years of experience in geotechnical engineering with extensive background in subsurface explorations and foundation analyses. Key projects Mrs. Hoppe has worked on include: TH 212 Design-Build project, the Elk Run Design-Build project, Silver Creek Pedestrian Bridge, Warner Road Bridge Reconstruction, and the I-90 Dresbach Interchange. Prior to re-joining AET, Mrs. Hoppe was a Senior Engineer with Braun Intertec Corporation. Megan holds a Bachelor of Science degree in Civil Engineering from the University of Minnesota. She is a licensed Professional Engineer in Minnesota, a member of The Minnesota Geotechnical Society, and an active member of the Annual University of Minnesota Geotechnical Conference Planning Committee. ♦

KRAUS-ANDERSON CONSTRUCTION COMPANY (KA) will build a new fire station for the City of Bayport, Minn. A groundbreaking ceremony will be held at 4:00 p.m., Monday, May 18 at the Bayport Fire Hall, located at 5th Av. North and Stagecoach Trail.

Owned by the City of Bayport, the new two-story, 17,650-square-foot Bayport Fire Hall replaces a 6,630-square-foot station built in the 1940s that no longer meets storage needs for vehicles and equipment. The new fire station will also eliminate safety issues and



improve access to other communities. The Bayport Fire Department serves 13,000 people in the Bayport, Baytown, Oak Park Heights and West Lakeland communities. The project is expected to be completed by March of 2016.

The new station will feature five stalls for fire trucks and will provide adequate space for existing and future expansion of apparatus and gear. Designed by Leo A Daly architects, the project will include upgraded offices and storage, and will incorporate multipurpose spaces to facilitate on-site training, meetings and public events.

Plans also include a training facility, exercise room, kitchen, dayroom, offices, conference and communication areas, equipment storage, laundry and mechanical shop.

Kraus-Anderson last year built a new 27,000-square-foot fire station for the City of Stillwater that replaced a 50-year-old facility. ♦



EMPIREHOUSE, INC., a glazing contractor based out of St. Paul, MN, earned an international award for safety excellence this past Friday evening during the FCA International Awards Ceremony in Chicago. The FCA CREST Awards are given by FCA International (an international construction contractor association) to those contractors who prove to be the safest contractors in their respective crafts. This marks the second year in a row that Empirehouse, Inc. has won the award.

“The FCA CREST Awards were created to encourage and recognize contractors who have led an effective safety program throughout the year,” explained Anthony Darkangelo, CEO of FCA International. “CREST Award winners have proven that protecting their employees is a priority at their company, and that they are a leader in construction safety.”

This is Empirehouse, Inc.’s second year entering the FCA CREST Awards, and its second year winning the “Architectural Glass & Metal: 50,001-100,000 man hours worked” category. “Empirehouse’s commitment to safety has grown largely due to an ever-changing industry and demanding time schedule. These increases demanded a safety program that meets and exceeds the expectations of our customers as well as ourselves. Empirehouse invested in the necessary training and equipment to make those that work for us safe,” said General Manager James Bringle when asked about the reasons for his company’s continued success in the CREST Awards.

The FCA CREST Awards were started in 2011 with a simple mission: encourage and recognize excellence in safety training. Awarded by FCA International, winners are objectively selected based on key safety metrics such as years the company has had a safety program, safety training, injury/illness rates, recordable incident rates, EMR trends, etc. Winners earn the right to say they are the safest contractor in their respective category. ♦

KRAUS-ANDERSON CONSTRUCTION COMPANY (KA) has added to its growing management staff. All employees will work in Minneapolis.



RICK LUND
- General Superintendent

Lund has been named general superintendent. He has worked for

KA since 1989, most recently as project superintendent. In his new position, Lund will work with the owners and project managers to oversee the day-to-day supervision and management of KA’s construction activities, including scheduling, coordination, safety and quality control. He holds several certifications, including those in healthcare construction and OSHA.



MATT JOHNSON
- Senior Project Manager

Johnson comes to KA from McGough and from Ryan Companies,

where he was a senior project manager. He received his B.S. in Construction Management from the University of Minnesota and served as crew chief in the Minnesota Army National Guard.



PAT HANK
- Project Superintendent

Hank previously worked for KA from 1999 to 2007 as a project superintendent.

Most recently, he also served as a project superintendent for Jaeger Construction. Hank received his degree in Business Management from North Hennepin Community College.



TODD BONNEY
- Superintendent

Prior to joining KA, Bonney was a project superintendent for North St. Paul-based Black/Dew.

He holds certifications in HVAC and in carpentry.

Kraus-Anderson has also hired the following additional staff in Minneapolis:

- **STEFAN MICHNO** – Assistant Project Manager
- **PATRICK PREDIGER** – Assistant Project Manager
- **BREANNA GISH** – Wellness Coordinator

In addition, **CHRIS PATRAW**, project manager, has received his Certified Healthcare Constructor (CHC) certification from the American Hospital Association. ♦

Citing continued growth in construction general contracting, **DORAN CONSTRUCTION** announced today the hiring of five new employees to boost its capacity in the areas of retail, hospitality and multi-family construction.



ROBERT MCINTYRE, Project Manager

Working as both a general contractor and project manager in the Mid-

Atlantic & Southwest United States, McIntyre recently built six Marriott & Choice flagship hotels over a two year period within budget and on schedule. Additional experience includes his working with many other hotel, multi-family, orthopedics, educational, government and retail franchise groups, including Hilton, Holiday Inn, Orthodontic Centers of America, USACE/GSA/FAA, JoAnn Fabrics, Office Max and Toys-R-Us. McIntyre is a graduate of Kansas State University earning a Bachelor of Architecture in a five-year degree program.

JAMES A. OLIVER, Construction Controller

Oliver comes with 18 years of construction accounting experience including 14 years at Mortenson Construction. Prior to joining the



Whitewater and will assume responsibility of overseeing Doran Construction's financials, financials, job cost reporting, owner billings and subcontractor qualification.



AMBER NOEL JACOBSEN, Project Engineer

Jacobsen has over seven years experience with Kraus Anderson Construction

working in the field on a variety of constructions projects, including multi-family, retail, educational and medical. Her organizational skills will add a key asset to Doran Construction job site operations and administration. Jacobsen attended Montana State University (Bozeman) for two years where she studied Environmental Design/Architecture and has earned Associated General Contractor certifications for Lean Construction.

BRIAN D. LAABS, Superintendent

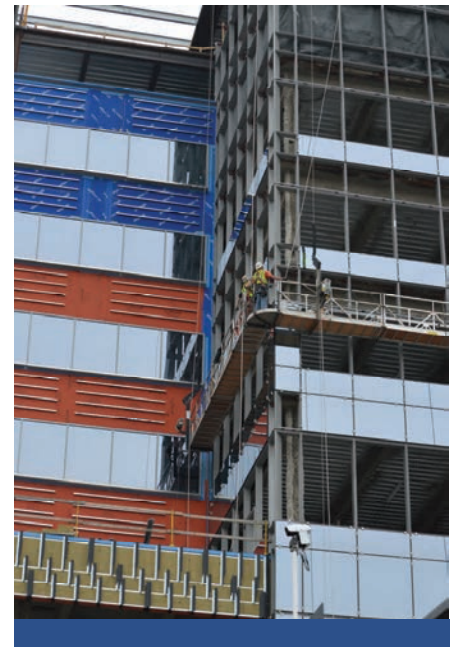
Laabs brings 25 years of experience to Doran Construction. His recent experience with GM Northrup Corporation included running successful retail projects for O'Reilly Auto Parts in four states and additional franchise retail projects for Pizza Hut and Master Cuts. Laabs earned his A. A. in Mechanical Drafting and Engineering at Hennepin Technical College in Eden Prairie.

ZACHARY NELSON, Assistant Superintendent

With nine years as a foreman at Kelleher Construction and having served the same amount of time in the Air Force Reserve, Nelson joins Doran Construction where he will put his

leadership skills to work in the general contracting arena. A graduate of the University of Minnesota with a major in Construction Management, Nelson was a Distinguished Graduate in Military Training, contributed 300 hours of leadership and mentorship at the U of M Solar House and was a College Dean's List recipient. ♦

KRAUS-ANDERSON CONSTRUCTION COMPANY (KA) has been selected to build the first campground of the Lake Vermilion - Soudan Underground Mine State Park, the first new Minnesota State Park in 30 years. The \$7 million development



Quality and craftsmanship is something we take seriously as a Glazing Specialty Contractor. Let Empirehouse be your source for fabrication and installation of "Serious" curtainwalls, entrances, storefront, glass railings and interior glass.



www.empirehouse.com
763.535.1150

consists of extensive site work, water distribution, septic systems, electrical coordination, and landscaping and site restoration. The park is located on the southern side of Lake Vermilion near Tower, Minn.

The site is designed to be the next generation in state parks with high standards for energy efficiency and accessibility. The development is a highly collaborative venture, partnering with the Bois Forte Band of Chippewa Indians, and with local community, schools, state colleges, area nonprofits, local experts and the DNR. The development will be sensitive to its pristine shoreline, wetlands and water quality and native plant communities.

The initial campground development will include 28 drive-in campsites, two group camps designed for tents and RVs, two sanitation buildings with showers and flush toilets, and a semi-primitive group camp with vault toilets, three picnic shelters and a water storage building.

Future phases of construction at the park, pending funding, will include a lodge, trail system, camper cabins, group camp and nature play areas, as well as additional hike-in, boat-in and ATV-in campsites.

The project will start June 1st and is scheduled for completion in 2016. ♦

STAHL CONSTRUCTION has begun interior demolition for a planned 149-room, five-story Hyatt Place hotel within the historic United States Post Office and Custom House building in the Lowertown neighborhood of St.

Paul. The hotel will be completed in spring of 2016.

Stahl Construction was hired by Des Moines-based Nelson Construction & Development to complete the hotel portion of this mixed-use redevelopment. When complete, the new Custom House will also include 202 luxury apartments on the upper floors as well as other retail and commercial components. Nelson is developing the hotel, and Wichita-based LodgeWorks Partners, L.P. will operate the completed Hyatt Place.

Located at 180 Kellogg Boulevard East, this \$19.7 million riverfront project involves the renovation and remodel of approximately 145,000-square-foot of space on the first five floors. The first floor will have a shared lobby for the residential tenants, hotel guests, and potential restaurant, with floors two through five featuring the Hyatt Place.

This 17-story art deco building was constructed in phases in 1934, 1939, and 1961, and was recently added to the National Register of Historic Places. Stahl will work with Nelson, the project architect, Des Moines-based INVISION Architecture, and the interior designer / engineer, Minneapolis-based BKV Group to maintain many of the building's historic features and restoring the hotel lobby finishes.

Highlights of the project include modernizing three elevators and the exterior window systems with the original 1930s design. A new light well will be constructed in the core space of the hotel to offer guests with interior rooms natural daylight. A pool on the

third floor will be added to the property along with meeting spaces, fitness area, and lounge. The hotel will also be equipped with a limited bar and kitchen area. ♦



DORAN COMPANIES announced today the promotion of their current General Counsel, **ANNE BEHRENDT**, to

the position of Chief Operating Officer (COO). Behrendt, who has been in the General Counsel role at Doran for four years, will assume the newly created position immediately while continuing to supervise the companies' legal affairs.

A Cum Laude graduate of the University of Minnesota Law School, Behrendt began practicing real estate law in 2004 with the Minneapolis law firm of Zappia & LeVahn. In 2011, she moved to the Doran Companies as General Counsel but was also actively involved in the day to day management and strategic growth of the company.

Kelly Doran, the owner and principal executive of Doran Companies, said the new position was made necessary by the company's upward growth trajectory and the difficulty for him to monitor all aspects of the various entities on a daily basis. "As COO, in addition to her monitoring of company goals and quotas and the execution of strategies to sustain our growth and profitability measures, we will continue to rely on Anne's proven leadership and strategic direction," Doran said. ♦

Would you like to see your name or your company's name in the *Member To Member* section of *Construction Views*?

If so, please send all company press releases, announcements and updates to Corinna Hastings, Executive Director and Editor, at info@mnconstruction.org

**WE CAN'T
THANK YOU
ENOUGH!**

**We thank the following
Silver Sponsor
(\$250 level) for their support:**

Carciofini Company

MCA

4248 Park Glen Road
Minneapolis, MN 55416
(952) 928-4646 • fax (952) 929-1318
www.mnconstruction.org
info@mnconstruction.org

Corinna Hastings, CAE
Executive Director and Editor

MCA is a non-profit association dedicated to educating and promoting the construction industry. Statements of fact and opinion in this publication are the responsibility of the authors alone and do not necessarily reflect or imply the opinion of the members, directors or staff of MCA.